

LOC I-RDG 109.5	APP CRS 004°	Rwy Idg 5151 TDZE 343 Apt Elev 344
---------------------------	------------------------	---

ILS or LOC RWY 36

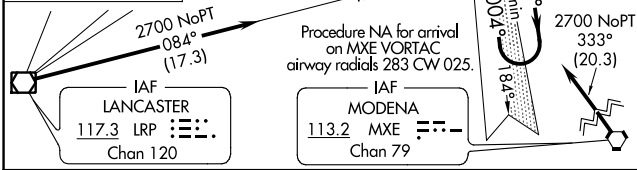
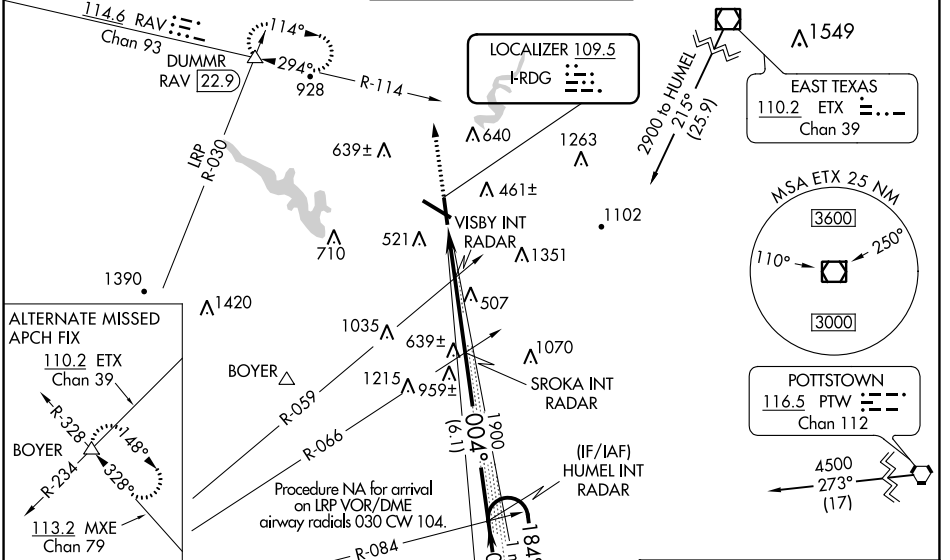
READING RGNL/CARL A SPAATZ FLD (RDG)

⚠ Night Landing: Rwy 18, 31 NA. Inoperative table does not apply. When local altimeter setting not received, use Harrisburg Intl altimeter setting and increase S-ILS 36 DA to 686 feet and all Cats visibility ¼ SM, and increase all MDAs 100 feet, and S-LOC 36 Cats C and D and Circling Cats B and C visibility ¼ SM.

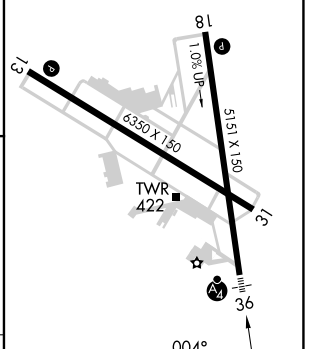
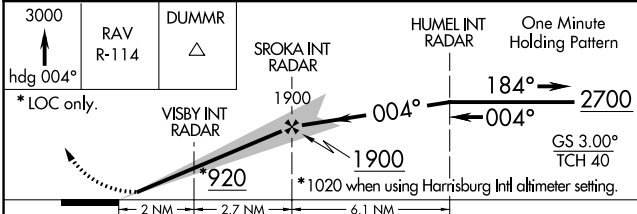
MALSF

MISSED APPROACH: Climb to 3000 on heading 004° and RAV VORTAC R-114 to DUMM/RAV 22.9 DME and hold, continue climb-in-hold to 3000.

ATIS 127.1	READING APP CON* 125.15 257.9	READING TOWER* 119.9 (CTAF) 288.3	GND CON 121.9	UNICOM 122.95
----------------------	---	---	-------------------------	-------------------------



ELEV 344	D	TDZE 343
----------	----------	----------



CATEGORY	A	B	C	D
S-ILS 36		593-1	250 (300-1)	
S-LOC 36	820-1	477 (500-1)	820-1¼ 477 (500-1¼)	820-1½ 477 (500-1½)
CIRCLING	1020-1 676 (700-1)	1080-1 736 (800-1)	1280-2¾ 936 (1000-2¾)	1660-3 1316 (1400-3)

REIL Rwy 13 and 31	HIRL Rws 13-31 and 18-36				
FAF to MAP 4.7 NM					
Knots	60	90	120	150	180
Min:Sec	4:42	3:08	2:21	1:53	1:34

NE-4, 26 DEC 2024 to 23 JAN 2025

NE-4, 26 DEC 2024 to 23 JAN 2025