

# RNAV (GPS) RWY 18

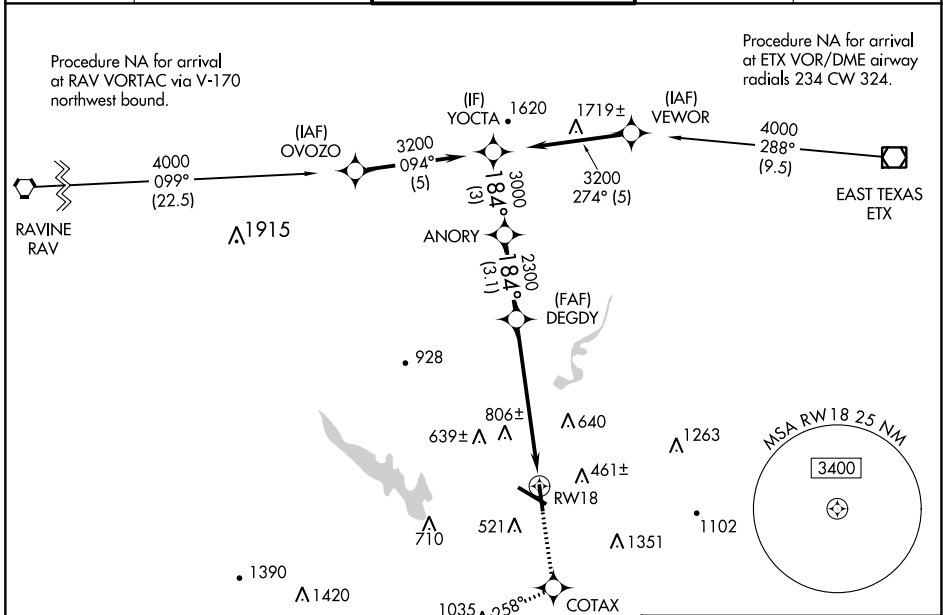
READING RGNL/CARL A SPAATZ FLD (RDG)

|             |          |             |
|-------------|----------|-------------|
| APP CRS     | Rwy Idg  | <b>5151</b> |
| <b>184°</b> | TDZE     | <b>319</b>  |
|             | Apt Elev | <b>344</b>  |

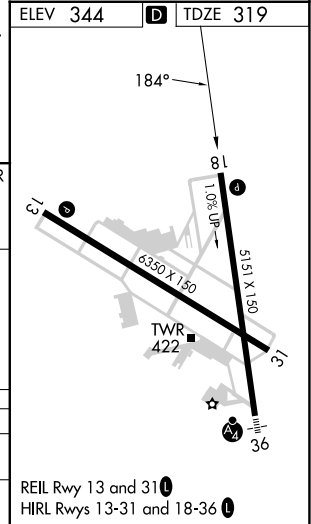
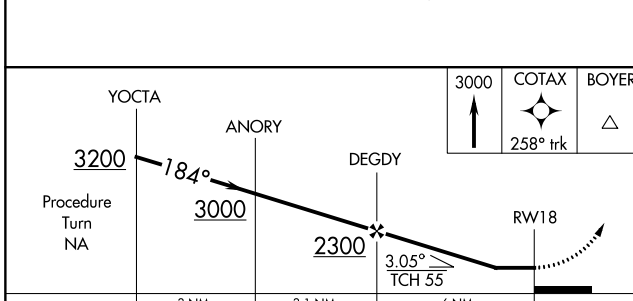
**⚠** Night landing: Rwy 18, 31 NA. DME/DME RNP-0.3 NA. Helicopter visibility reduction below 1 SM NA. When local altimeter setting not received, use Harrisburg Intl altimeter setting and increase all MDAs 100 feet, and increase LNAV Cat B visibility ¼ SM and Cat C and D visibility ½ SM, and increase Circling Cats B and C visibility ¼ SM.

**MISSED APPROACH:** Climb to 3000 direct COTAX and via 258° track to BOYER and hold, continue climb-in-hold to 3000.

|              |                     |                             |              |               |
|--------------|---------------------|-----------------------------|--------------|---------------|
| ATIS         | READING APP CON *   | READING TOWER *             | GND CON      | UNICOM        |
| <b>127.1</b> | <b>125.15 257.9</b> | <b>119.9 (CTAF) 0 288.3</b> | <b>121.9</b> | <b>122.95</b> |



|          |                   |
|----------|-------------------|
| ELEV 344 | <b>D</b> TDZE 319 |
|----------|-------------------|



| CATEGORY | A                     | B                     | C                        | D                       |
|----------|-----------------------|-----------------------|--------------------------|-------------------------|
| LNAV MDA | 980-1                 | 661 (700-1)           | 980-1¾<br>661 (700-1¾)   | 980-2<br>661 (700-2)    |
| CIRCLING | 1020-1<br>676 (700-1) | 1080-1<br>736 (800-1) | 1280-2¾<br>936 (1000-2¾) | 1660-3<br>1316 (1400-3) |

NE-4, 26 DEC 2024 to 23 JAN 2025

NE-4, 26 DEC 2024 to 23 JAN 2025