

WAAS CH <b>61033</b> <b>W32A</b>	APP CRS <b>320°</b>	Rwy Idg <b>5324</b> TDZE <b>410</b> Apt Elev <b>411</b>
--	------------------------	---

# RNAV (GPS) RWY 32

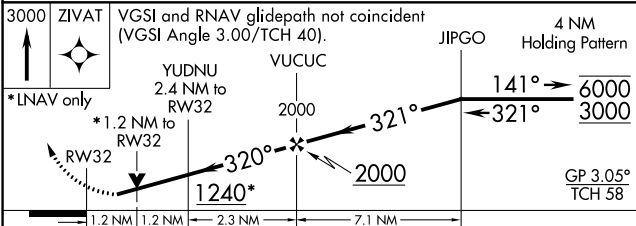
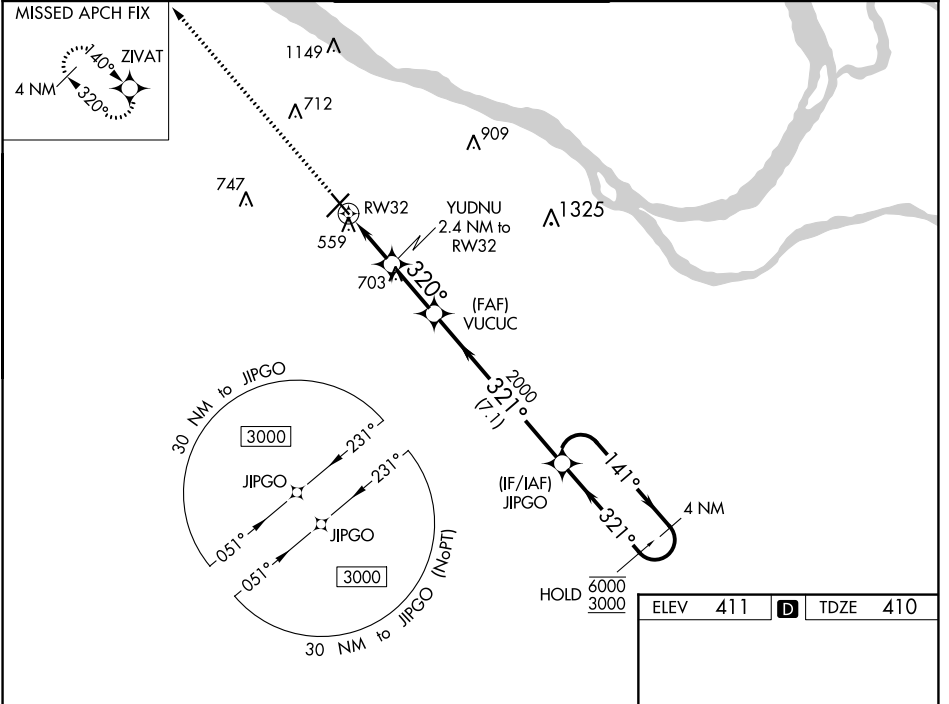
BARKLEY RGNL (PAH)

RNP APCH.

**▽** **▲** Rwy 32 helicopter visibility reduction below 3/4 SM NA. For uncompensated Baro-VNAV systems, LNAV/VNAV NA below -15°C or above 54°C.

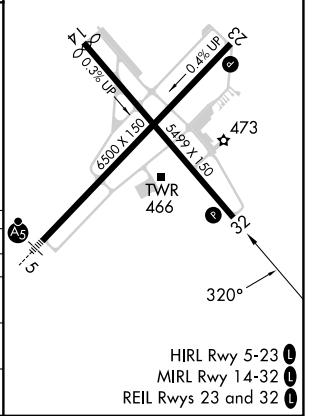
MISSED APPROACH:  
Climb to 3000 direct ZIVAT and hold.

ASOS <b>118.375</b>	MEMPHIS CENTER <b>133.65 292.15</b>	PADUCAH TOWER ★ <b>119.6 (CTAF) 306.9</b>	GND CON <b>121.7 306.9</b>	UNICOM <b>122.95</b>
------------------------	--	--	-------------------------------	-------------------------



ELEV 411	<b>D</b> TDZE 410
----------	-------------------

CATEGORY	A	B	C	D
LPV DA		757-1	347 (400-1)	
LNAV/VNAV DA		832-1 1/4	422 (500-1 1/4)	
LNAV MDA	820-1 410 (500-1)		820-1 1/8 410 (500-1 1/8)	
<b>C</b> CIRCLING	900-1 489 (500-1)		920-1 1/2 509 (600-1 1/2)	1100-2 1/4 689 (700-2 1/4)



SE-1, 26 DEC 2024 to 23 JAN 2025

SE-1, 26 DEC 2024 to 23 JAN 2025

HIRL Rwy 5-23 **1**  
MIRL Rwy 14-32 **1**  
REIL Rwy 23 and 32 **1**