

VOR/DME CNG <b>113.1</b> Chan <b>78</b>	APP CRS <b>221°</b>	Rwy Idg TDZE Apt Elev	<b>6500</b> <b>402</b> <b>411</b>
---	------------------------	-----------------------------	---

# VOR RWY 23

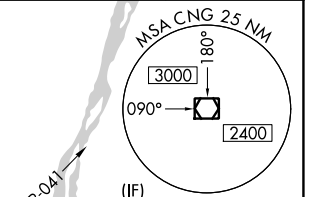
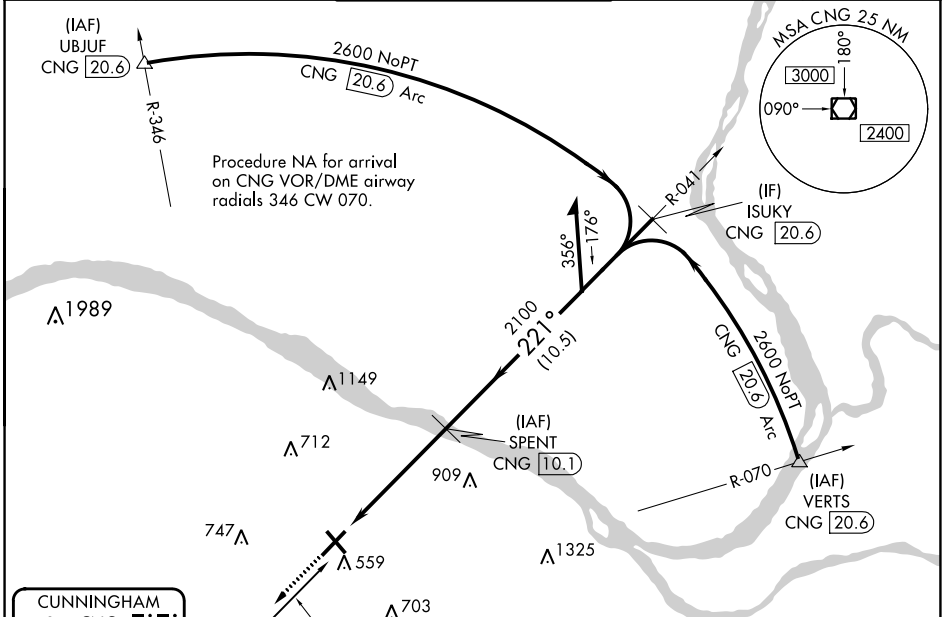
BARKLEY RGNL (PAH)

DME required.

**▼**  
**▲** Rwy 23 helicopter visibility reduction below 3/4 SM NA.

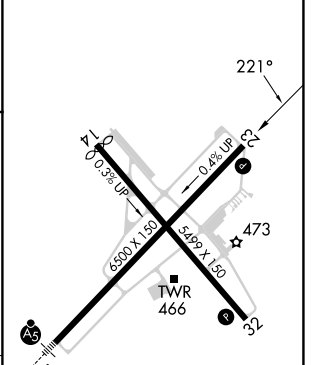
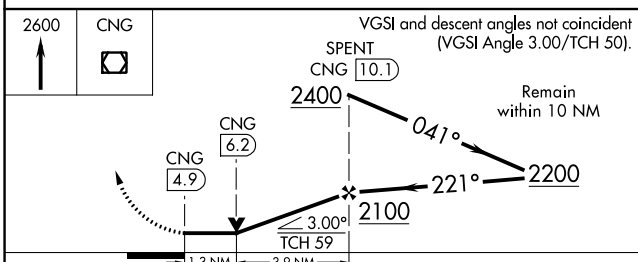
MISSED APPROACH: Climb to 2600 direct CNG VOR/DME and hold, continue climb-in-hold to 2600.

ASOS <b>118.375</b>	MEMPHIS CENTER <b>133.65 292.15</b>	PADUCAH TOWER ★ <b>119.6 (CTAF) 306.9</b>	GND CON <b>121.7 306.9</b>	UNICOM <b>122.95</b>
------------------------	--	--	-------------------------------	-------------------------



**CUNNINGHAM**  
113.1 CNG  
Chan 78

ELEV 411	<b>D</b>	TDZE 402
----------	----------	----------



CATEGORY	A	B	C	D
S-23	860-1 458 (500-1)		860-1 3/8 458 (500-1 3/8)	
<b>C</b> CIRCLING	900-1 489 (500-1)		920-1 1/2 509 (600-1 1/2)	1100-2 1/4 689 (700-2 1/4)

HIRL Rwy 5-23  
MIRL Rwy 14-32  
REIL Rws 23 and 32

SE-1, 26 DEC 2024 to 23 JAN 2025

SE-1, 26 DEC 2024 to 23 JAN 2025