

NEW ORLEANS, LOUISIANA

ILS or LOC/DME RWY 4

NEW ORLEANS NAS JRB
(ALVIN CALLENDER FLD) (KNBG)

LOC I-NBG 109.5	APCH CRS 044°	Rwy ldg TDZE Arpt Elev 10,000 -2 2
---------------------------	-------------------------	--

AL-630 [USN]

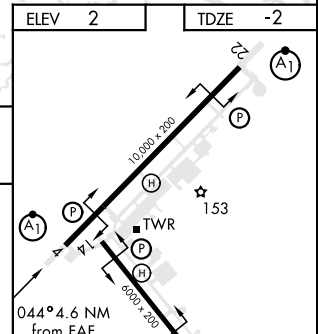
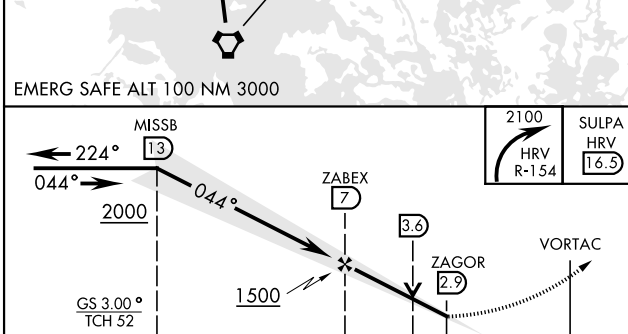
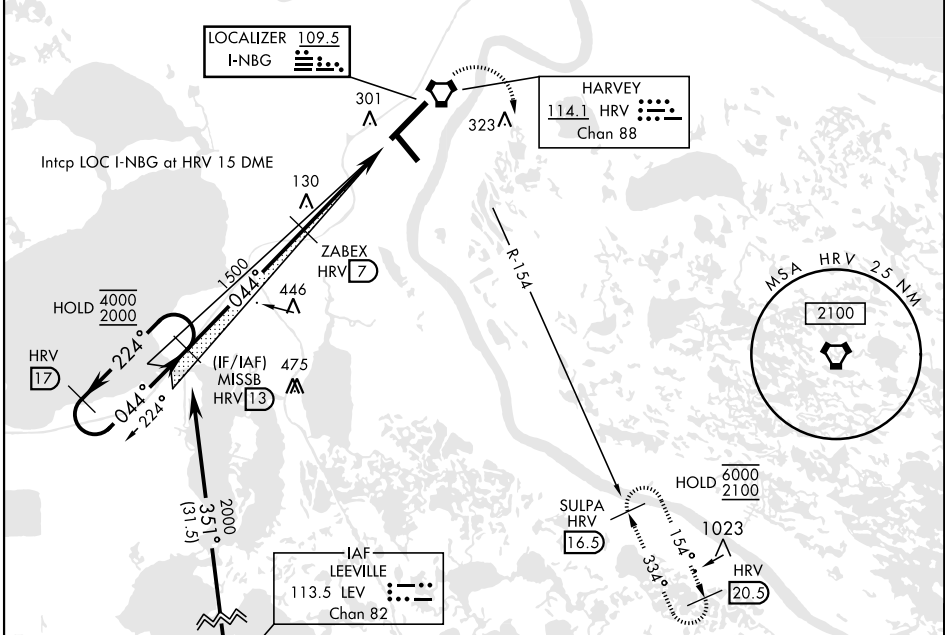
RNAV or ATC RADAR monitoring required.
 ▼ * When ALS inop, increase vis to ¾ mile.



MISSED APPROACH: Execute climbing right turn to 2100, intercept HRV VORTAC R-154 to SULPA. Cross 10 DME at 2000. Hold at SULPA.

ATIS * 279.55	APP CON 123.85 256.9	NAVY NEW ORLEANS TOWER * 123.8 340.2 (CTAF)	GND CON 121.6 270.35	CLNC DEL 128.35 263.0	ASR/PAR
-------------------------	--------------------------------	---	--------------------------------	---------------------------------	---------

** When ALS inop, increase CAT AB vis to 1 mile; CAT CDE vis to 1¼ miles
 *** Circling NA for CAT E NW of Rwy 4-22.



ELEV	2		TDZE	-2	
CATEGORY	A	B	C	D	E
S-ILS 4 *	198-½		200	(200-½)	
S-LOC 4 **	420-½ 422 (500-½)		420-¾ 422 (500-¾)		
CIRCLING ***	640-1 638 (700-1)		640-1¾ 638 (700-1¾)	640-2 638 (700-2)	640-2¼ 638 (700-2¼)
FAF to MAP 4.1 NM					
Knots					
	60	90	120	150	180
Min:Sec					
	4:06	2:44	2:03	1:38	1:22

NEW ORLEANS, LOUISIANA
Amdt 3 04NOV21

29°50'N-90°02'W

NEW ORLEANS NAS JRB (KNBG)
(ALVIN CALLENDER FLD)

ILS or LOC/DME RWY 4

SC-4, 26 DEC 2024 to 23 JAN 2025

SC-4, 26 DEC 2024 to 23 JAN 2025