

NEW ORLEANS, LOUISIANA

# RNAV (GPS) RWY 14

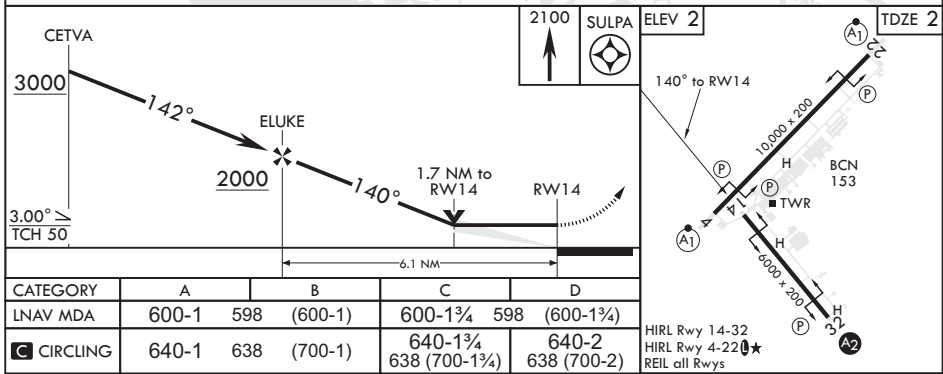
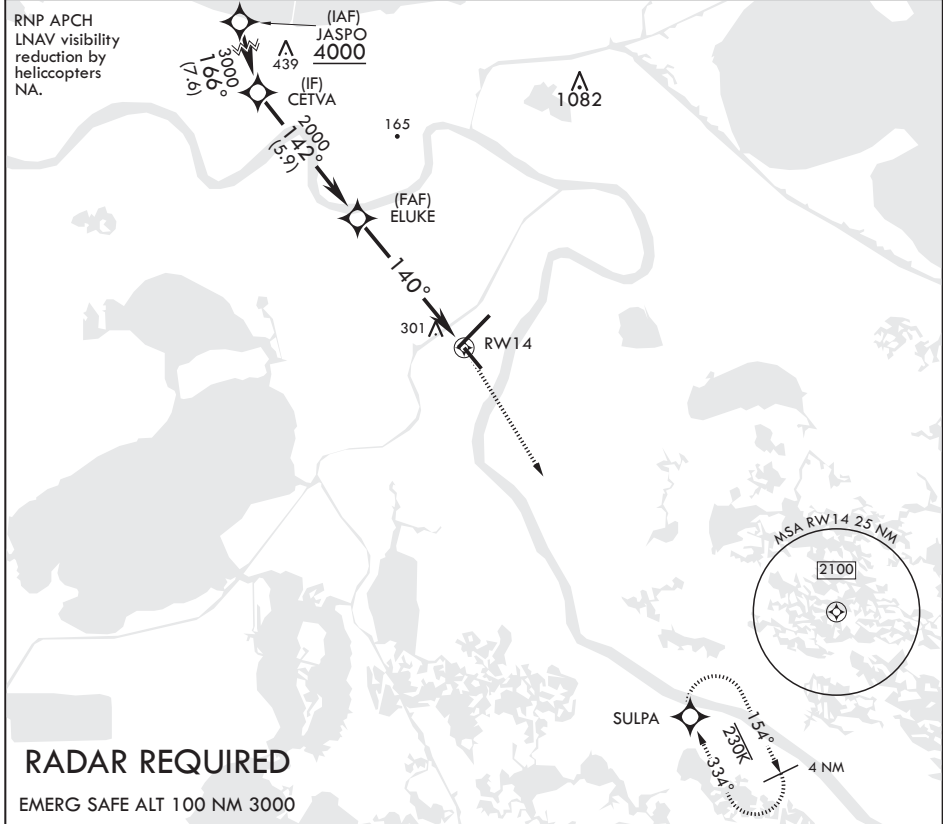
APCH CRS	Rwy Idg	6000
140°	TDZE	2
	Arprt Elev	2

AL-630 (USN)

NEW ORLEANS NAS JRB (ALVIN CALLENDER FLD) (KNBG)

		MISSED APPROACH: Climbing right turn to 2100 direct SULPA and hold.			
--	--	---	--	--	--

ATIS*	APP CON/DEP CON	NAVY NEW ORLEANS TOWER*	GND CON	CLNC DEL	ASR/PAR
279.55	123.85 256.9	123.8 0* 340.2 (CTAF)	121.6 270.35	128.35 263.0	



NEW ORLEANS, LOUISIANA

29°50'N - 90°02'W NEW ORLEANS NAS JRB (ALVIN CALLENDER FLD) (KNBG)

Amdt 2 04NOV21

# RNAV (GPS) RWY 14

SC-4, 26 DEC 2024 to 23 JAN 2025

SC-4, 26 DEC 2024 to 23 JAN 2025