

NEW ORLEANS, LOUISIANA

# RNAV (GPS) RWY 22

AL-630 (USN)

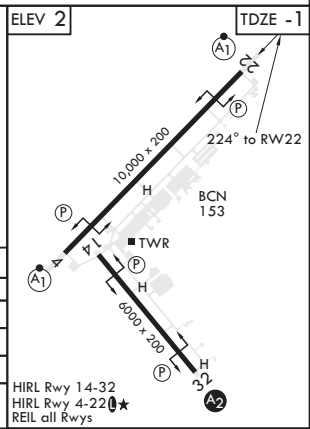
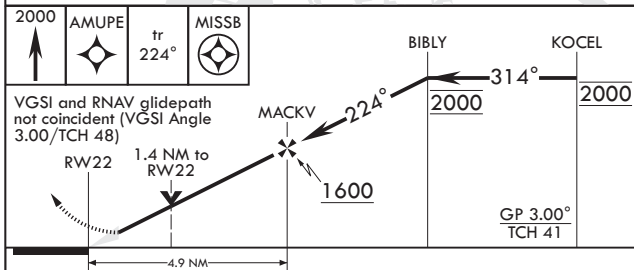
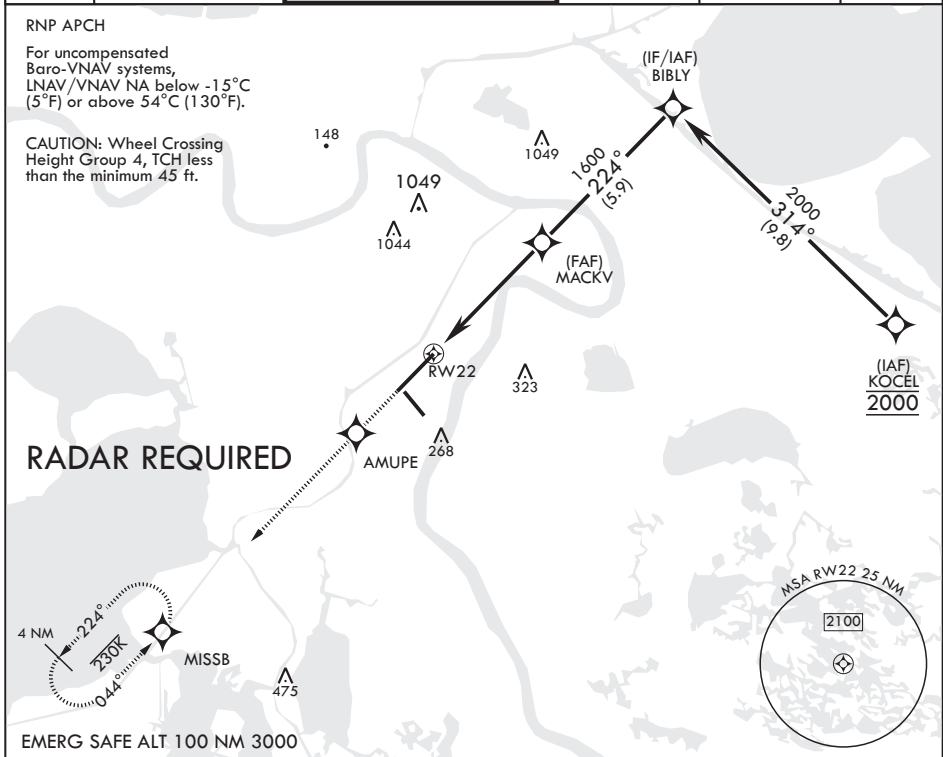
NEW ORLEANS NAS JRB (ALVIN CALLENDER FLD) (KNBG)

WAAS CH <b>60141</b> W22A	APCH CRS <b>224°</b>	Rwy ldg TDZE Arprt Elev	<b>10,000</b> <b>-1</b> <b>2</b>
---------------------------------	-------------------------	-------------------------------	--

▼ \* When ALS inop, increase CAT ABCD vis to 3/4 mile.  
 \*\* When ALS inop, increase CAT ABCD vis to 1 mile.  
 \*\*\* When ALS inop, increase CAT AB vis to 1 mile; CAT CD vis to 1 3/8 miles.

ALSF-1  MISSED APPROACH: Climb to 2000 direct AMUPE track 224° to MISSB and hold.

ATIS* <b>279.55</b>	APP CON/DEP CON <b>123.85 256.9</b>	NAVY NEW ORLEANS TOWER* <b>123.8 0* 340.2 (CTAF)</b>	GND CON <b>121.6 270.35</b>	CLNC DEL <b>128.35 263.0</b>	ASR/PAR
------------------------	--	---	--------------------------------	---------------------------------	---------



CATEGORY	A	B	C	D
LPV DA*	200-1/2	200	(200-1/2)	
LNAV/VNAV DA**	378-5/8	378	(400-5/8)	
LNAV MDA***	480-1/2 480 (500-1/2)	480-1 480 (500-1)	480-1 480 (500-1)	480-1 480 (500-1)
◻ CIRCLING	640-1 638 (700-1)	640-1 638 (700-1)	640-1 638 (700-1)	640-2 638 (700-2)

HIRL Rwy 14-32  
 HIRL Rwy 4-22  
 REIL all Rwys

NEW ORLEANS, LOUISIANA 29°50'N - 90°02'W NEW ORLEANS NAS JRB (ALVIN CALLENDER FLD) (KNBG)

Amdt 3 04NOV21

# RNAV (GPS) RWY 22

SC-4, 26 DEC 2024 to 23 JAN 2025

SC-4, 26 DEC 2024 to 23 JAN 2025