

NEW ORLEANS, LOUISIANA

# RNAV (GPS) RWY 32

AL-630 (USN)

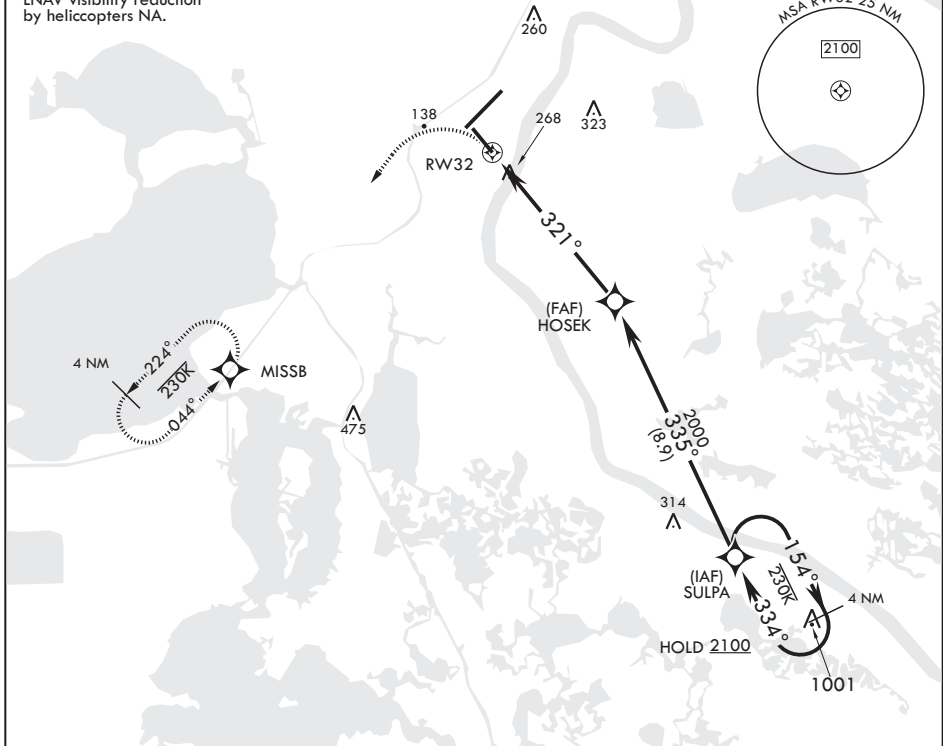
NEW ORLEANS NAS JRB (ALVIN CALLENDER FLD) (KNBG)

APCH CRS	Rwy Idg	6000
321°	TDZE	2
	Arprt Elev	2

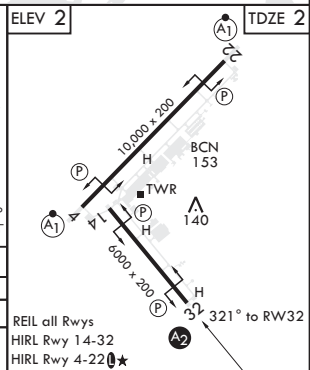
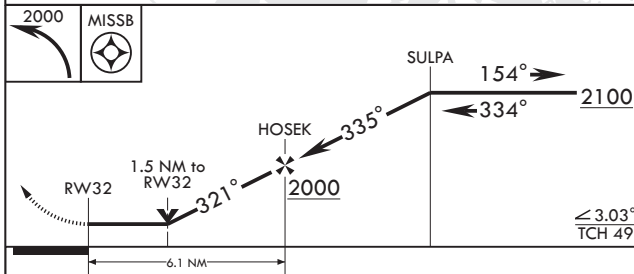
RNP APCH.	SALS	MISSED APPROACH: Climbing left turn to 2000 direct MISSB and hold.
RADAR required.	A2	
* When ALS inop, increase CAT AB vis to 1 mile; CAT CD vis to 1 3/8 miles.		

ATIS★	APP CON/DEP CON	NAVY NEW ORLEANS TOWER★	GND CON	CLNC DEL	ASR/PAR
279.55	123.85 256.9	123.8 (0★) 340.2 (CTAF)	121.6 270.35	128.35 263.0	

LNAV visibility reduction by helicopters NA.



EMERG SAFE ALT 100 NM 3000



CATEGORY	A	B	C	D
LNAV MDA*	520-3/4	518 (600-3/4)	520-1 1/4	518 (600-1 1/4)
☐ CIRCLING	640-1	638 (700-1)	640-1 1/4	640-2
			638 (700-1 1/4)	638 (700-2)

REIL all Rwys  
HIRL Rwy 14-32  
HIRL Rwy 4-22 (0★)

NEW ORLEANS, LOUISIANA

29°50'N - 90°02'W NEW ORLEANS NAS JRB (ALVIN CALLENDER FLD) (KNBG)

Amdt 4 19MAY22

# RNAV (GPS) RWY 32

SC-4, 26 DEC 2024 to 23 JAN 2025

SC-4, 26 DEC 2024 to 23 JAN 2025