

NEW ORLEANS, LOUISIANA

RNAV (GPS) RWY 4

APCH CRS 044°	Rwy Idg TDZE Arprt Elev	10,000 -2 2
-------------------------	-------------------------------	--------------------------

AL-630 (USN)

NEW ORLEANS NAS JRB (ALVIN CALLENDER FLD) (KNBG)

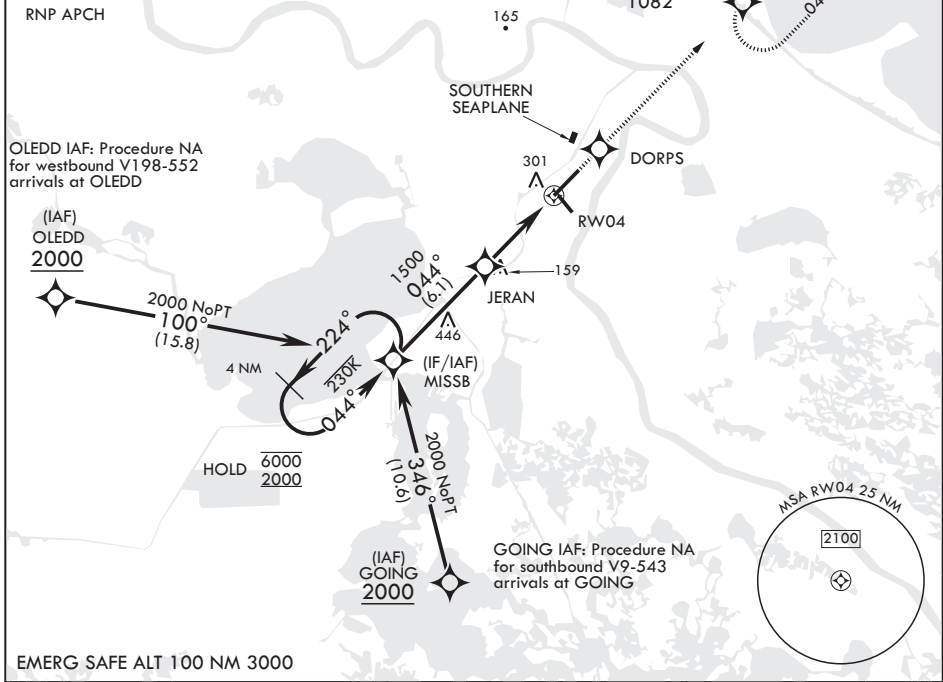
V * When ALS inop, increase vis to 1 1/8 miles.
 ** When ALS inop, increase CAT AB vis to 1 mile; CAT CD vis to 1 1/8 miles.



MISSED APPROACH: Climb to 2100 direct DORPS, track 044° to BIBLY and hold.

ATIS* 279.55	APP CON/DEP CON 123.85 256.9	NAVY NEW ORLEANS TOWER* 123.8 0* 340.2 (CTAF)	GND CON 121.6 270.35	CLNC DEL 128.35 263.0	ASR/PAR
------------------------	--	---	--------------------------------	---------------------------------	---------

For uncompensated Baro-VNAV systems, LNAV/VNAV NA below -15°C (5°F) or above 54°C (130°F).



EMERG SAFE ALT 100 NM 3000

6000 2000 ← 224° 044° → 2000 MISSB 044° JERAN 1500 1 NM to RW04 RW04 4.6 NM	2100 DORPS tr 044° BIBLY	ELEV 2 TDZE -2
CIRCLING	640-1 638 (700-1)	640-2 638 (700-2)

CATEGORY	A	B	C	D
LNAV/VNAV DA*	379-5/8 381 (400-5/8)			
LNAV MDA**	380-1/2	382 (400-1/2)	380-5/8	382 (400-5/8)
CIRCLING	640-1	638 (700-1)	640-1 1/4 638 (700-1 1/4)	640-2 638 (700-2)

HIRL Rwy 14-32
 HIRL Rwy 4-22 0*
 REIL all Rwys

NEW ORLEANS, LOUISIANA

29°50'N - 90°02'W NEW ORLEANS NAS JRB (ALVIN CALLENDER FLD) (KNBG)

Amdt 5 04NOV21

RNAV (GPS) RWY 4

SC-4, 26 DEC 2024 to 23 JAN 2025

SC-4, 26 DEC 2024 to 23 JAN 2025