

NEW ORLEANS, LOUISIANA

VOR/DME or TACAN Z RWY 22

VORTAC HRV 114.1 Chan 88	APCH CRS 237°	Rwy Idg TDZE Arprt Elev 10,000 -1 2
--	-------------------------	---

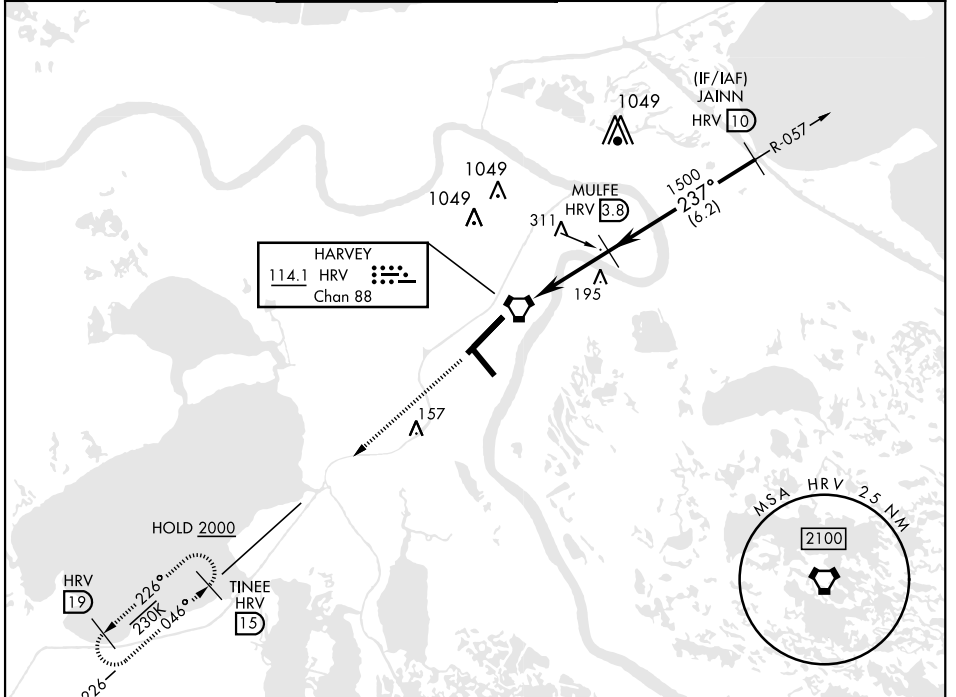
AL-630 [USN]

NEW ORLEANS NAS JRB
(ALVIN CALLENDER FLD) (KNBG)

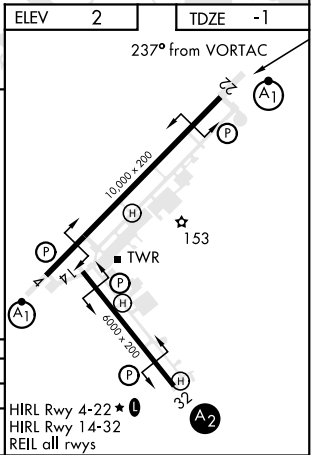
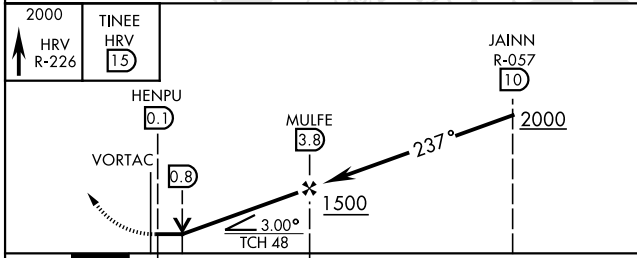
RNAV or ATC RADAR monitoring required.
* When ALS inop, increase CAT AB vis to 1 mile, CAT CD vis to 1½ miles.

ALSF-1
(A1)
MISSED APPROACH: Climb to 2000 on HVR R-226 to TINEE and hold.

ATIS ★ 279.55	APP CON 123.85 256.9	NAVY NEW ORLEANS TOWER ★ 123.8 340.2 (CTAF)	GND CON 121.6 270.35	CLNC DEL 128.35 263.0	ASR/PAR
-------------------------	--------------------------------	---	--------------------------------	---------------------------------	---------



EMERG SAFE ALT 100 NM 3000



CATEGORY	A	B	C	D
S-22 *	540-5/8 540 (600-5/8)		540-1 540 (600-1)	
CIRCLING	640-1 638 (700-1)		640-1 3/4 638 (700-1 3/4)	640-2 638 (700-2)

HIRL Rwy 4-22 ★
HIRL Rwy 14-32
REIL all rwy's

NEW ORLEANS, LOUISIANA
Orig 04NOV21

29° 50' N-90° 02' W

NEW ORLEANS NAS JRB (KNBG)
(ALVIN CALLENDER FLD)

VOR/DME or TACAN Z RWY 22

SC-4, 26 DEC 2024 to 23 JAN 2025

SC-4, 26 DEC 2024 to 23 JAN 2025