

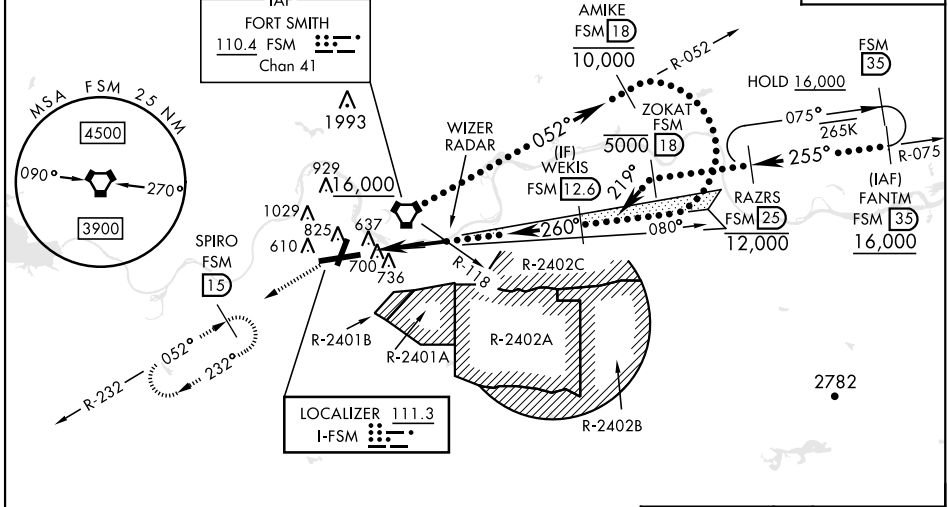
# HI-ILS Y or LOC Y RWY 26

LOC I-FSM <b>111.3</b>	APCH CRS <b>260°</b>	Rwy Idg TDZE Arprt Elev <b>9318</b> <b>448</b> <b>469</b>	[USAF] FORT SMITH RGNL (EBBING FLD ANGB) (KFSM)
DME required		MALSR A5	MISSED APPROACH: Climb to 1400 then climbing left turn to 4000 on heading 224° and FSM VORTAC R-232 to SPIRO/FSM (15 DME) and hold. Continue climb in hold to 4000.

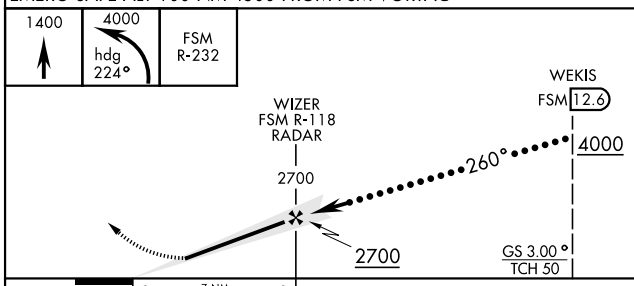
ATIS <b>124.775</b>	RAZORBACK APP CON * <b>120.9 343.75</b>	TOWER * <b>118.3 (CTAF) 0 323.175</b>	GND CON <b>121.9 275.8</b>	CLNC DEL <b>133.85 278.3</b>
------------------------	--	--	-------------------------------	---------------------------------

\*\*\* Circling not authorized for CAT E NW of Rwy 8 and Rwy 20.  
 Circling not authorized for CAT E when R-2401B active.  
 Circling Rwy 20 and Rwy 26 not authorized at night.  
 RVR 1800 Authorized with use of FD or AP or HUD to DA.

Procedure not authorized for arrivals on FSM VORTAC Airway Radials 359 CW 105.



EMERG SAFE ALT 100 NM 4500 FROM FSM VORTAC



ELEV	469	TDZE	448
			618

HIRL Rwy 8-26	0
MIRL Rwy 2-20	0
FAF to MAP 7 NM	
Knots	120 140 160 180 200
Min:Sec	3:30 3:00 2:38 2:20 2:06

CATEGORY	C	D	E
S-ILS 26 *	648/24	200 (200-1/2)	
S-LOC 26 **	960-55	512 (600-1)	
CIRCLING ***	1400-234 931 (1000-234)	1400-3	931 (1000-3)

# HI-ILS Y or LOC Y RWY 26

SC-1, 26 DEC 2024 to 23 JAN 2025

SC-1, 26 DEC 2024 to 23 JAN 2025