

JNC8.JNC) 24137

AL-634 (FAA)

GRAND JUNCTION RGNL (GJT)
GRAND JUNCTION, COLORADO

GRAND JUNCTION EIGHT DEPARTURE

DENVER DEP CON ★
119.7 317.4
ATIS
118.55
GND CON
121.7 257.8
GRAND JUNCTION TOWER ★
118.1 257.8

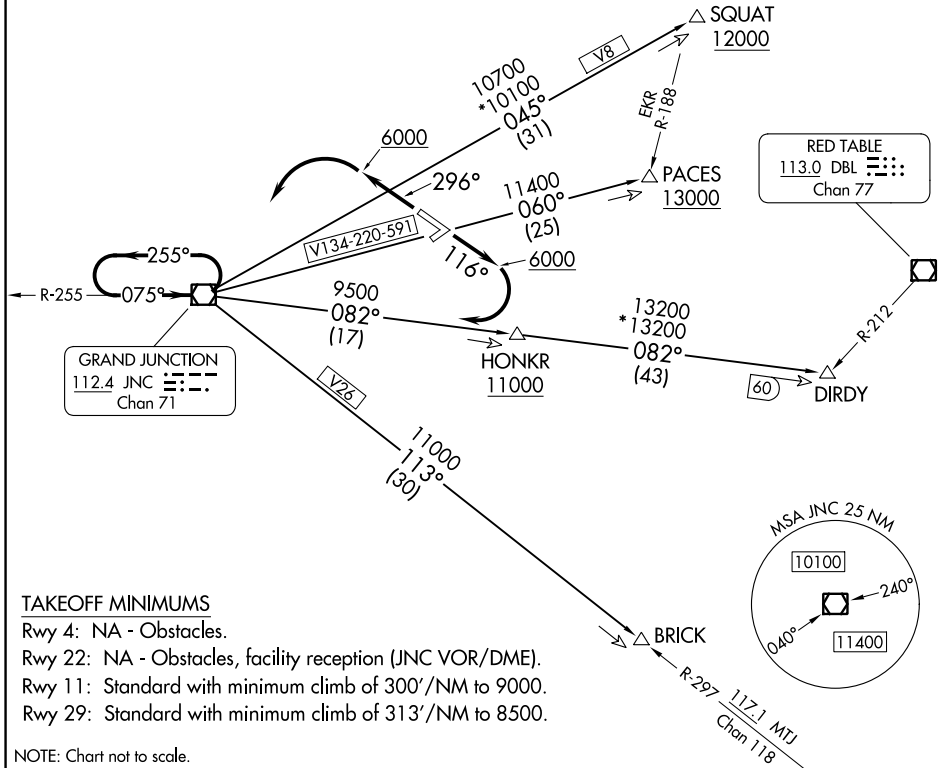
BRICK and DIRDY Transition: DME required.

TOP ALTITUDE:
6000

MEEKER
115.2 EKR
Chan 99

RED TABLE
113.0 DBL
Chan 77

GRAND JUNCTION
112.4 JNC
Chan 71



TAKEOFF MINIMUMS

- Rwy 4: NA - Obstacles.
- Rwy 22: NA - Obstacles, facility reception (JNC VOR/DME).
- Rwy 11: Standard with minimum climb of 300'/NM to 9000.
- Rwy 29: Standard with minimum climb of 313'/NM to 8500.

NOTE: Chart not to scale.

DEPARTURE ROUTE DESCRIPTION

- TAKEOFF RUNWAY 11:** Climb on heading 116° to 6000, then right turn direct JNC VOR/DME, thence. . . .
- TAKEOFF RUNWAY 29:** Climb on heading 296° to 6000, then left turn direct JNC VOR/DME, thence. . . .
-(transition) maintain 6000, expect filed altitude 10 minutes after departure.
- BRICK TRANSITION (JNC8.BRICK):** From over JNC VOR/DME on JNC R-113 to BRICK.
- DIRDY TRANSITION (JNC8.DIRDY):** From over JNC VOR/DME on JNC R-082 to DIRDY.
- PACES TRANSITION (JNC8.PACES):** From over JNC VOR/DME on JNC R-060 to PACES.
- SQUAT TRANSITION (JNC8.SQUAT):** From over JNC VOR/DME on JNC R-045 to SQUAT.

GRAND JUNCTION EIGHT DEPARTURE
(JNC8.JNC) 16MAY24

GRAND JUNCTION, COLORADO
GRAND JUNCTION RGNL (GJT)

SW-1, 26 DEC 2024 to 23 JAN 2025

SW-1, 26 DEC 2024 to 23 JAN 2025