

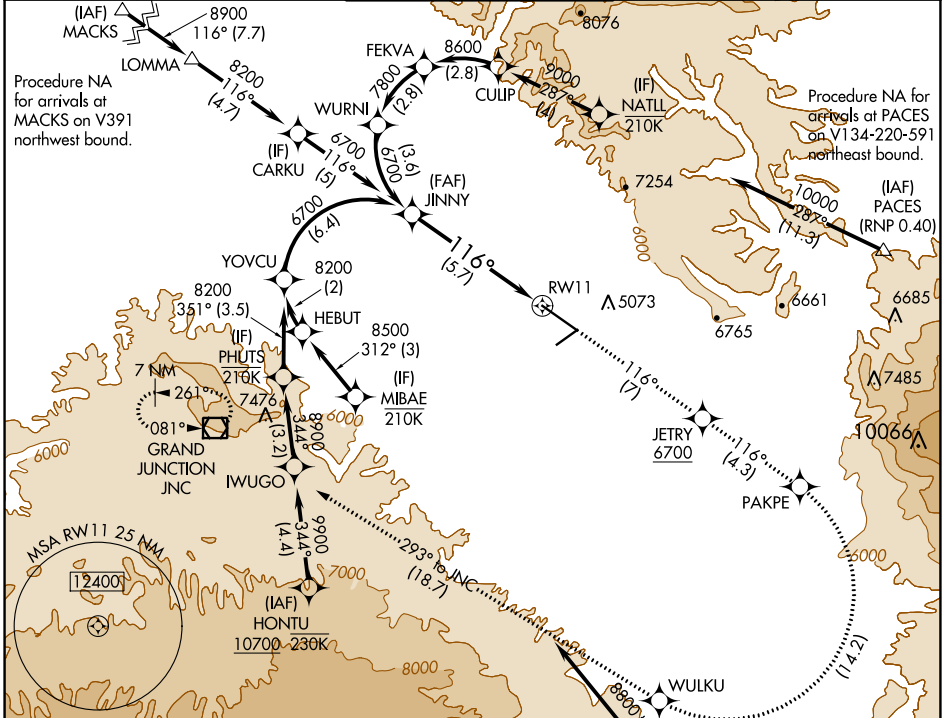
APP CRS 116°	Rwy Idg TDZE Apt Elev	9339 4840 4861
------------------------	-----------------------------	-------------------------------------------

RNAV (RNP) Z RWY 11

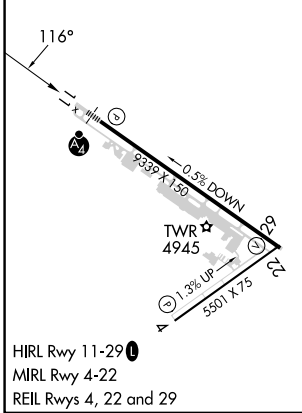
GRAND JUNCTION RGNL (GJT)

RNP AR APCH - GPS.	MALSF	MISSED APPROACH: Climb to 9000 on track 116° to JETRY, cross JETRY at or above 6700, and track 116° to PAKPE, right turn to WULKU, and track 293° to JNC VOR/DME and hold.
▼ For uncompensated Baro-VNAV systems, procedure NA below -17°C or above 54°C. For inoperative ALS, increase RNP 0.30 all Cats visibility to 1½ SM.		

ATIS 118.55	DENVER APP CON * 119.7 317.4	GRAND JUNCTION TOWER * 118.1 (CTAF) 257.8	GND CON 121.7 257.8	UNICOM 122.95
-----------------------	----------------------------------------	-----------------------------------------------------	-------------------------------	-------------------------



ELEV 4861	D	TDZE 4840
-----------	---	-----------



JINNY	9000	JETRY	PAKPE	WULKU	JNC
6700	tr 116°	6700	tr 116°	tr 293°	
See planview for multiple IF locations.					
GP 3.00°	5.7 NM				
TCH 50	RW11				
CATEGORY	A	B	C	D	
RNP 0.10 DA	5183/40		343 (400-¾)		
RNP 0.30 DA	5346-1¼		506 (500-1¼)		

SW-1, 26 DEC 2024 to 23 JAN 2025

SW-1, 26 DEC 2024 to 23 JAN 2025