

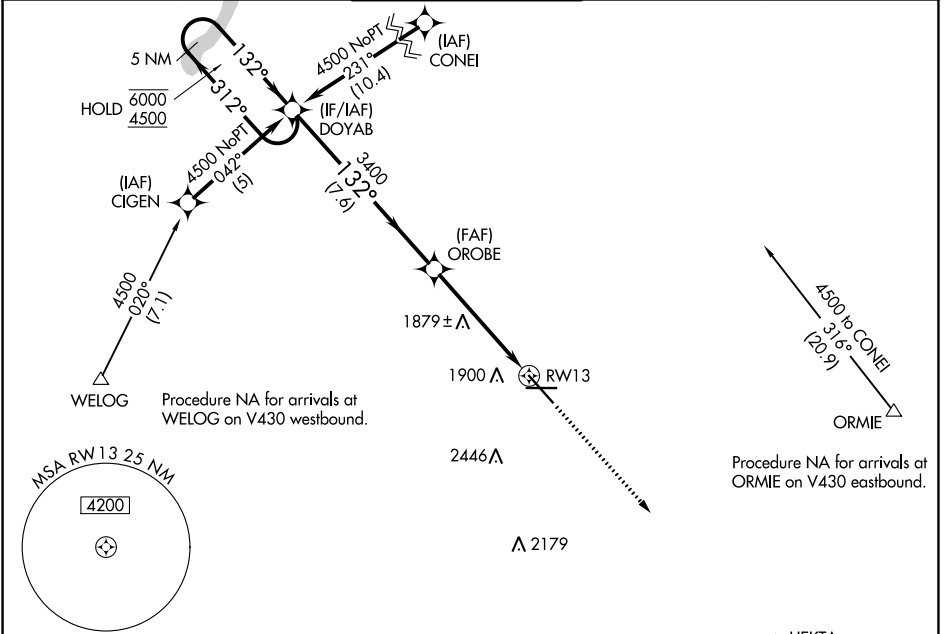
WAAS CH <b>70399</b> <b>W13A</b>	APP CRS <b>132°</b>	Rwy Idg TDZE Apt Elev	<b>7700</b> <b>1702</b> <b>1716</b>
--	------------------------	-----------------------------	---

# RNAV (GPS) RWY 13

MINOT INTL (MOT)

RNP APCH.	MISSED APPROACH: Climb to 4000 direct HEKTA and hold.
▼ For uncompensated Baro-VNAV systems, LNAV/VNAV NA below -18°C or above 54°C.	

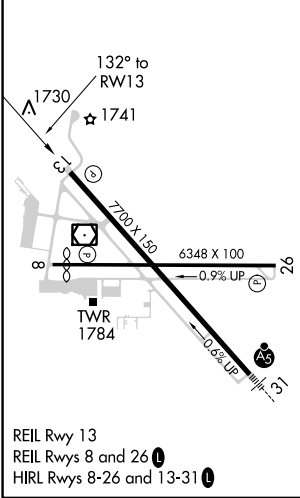
ASOS <b>118.725</b>	MINOT APP CON * <b>119.6 363.8</b>	MAGIC CITY TOWER * <b>118.2 (CTAF) 0 251.125</b>	GND CON <b>121.9</b>	UNICOM <b>122.95</b>
------------------------	---------------------------------------	---	-------------------------	-------------------------



NC-1, 26 DEC 2024 to 23 JAN 2025

NC-1, 26 DEC 2024 to 23 JAN 2025

ELEV 1716	<b>D</b>	TDZE 1702
-----------	----------	-----------



5 NM Holding Pattern 6000 ← 312° 4500 → 132° GP 3.00° TCH 49	DOYAB		OROBE		4000	HEKTA
	3149		3400		↑	✧
7.6 NM		3.9 NM		1.2		
CATEGORY	A	B	C	D		
LPV DA	2021-1 319 (400-1)					
LNAV/VNAV DA	2181-1¾ 479 (500-1¾)					
LNAV MDA	2140-1	438 (500-1)	2140-1¼	2140-1½	438 (500-1½)	
CIRCLING	2200-1	2240-1	2800-3		1084 (1100-3)	
	484 (500-1)	524 (600-1)				