

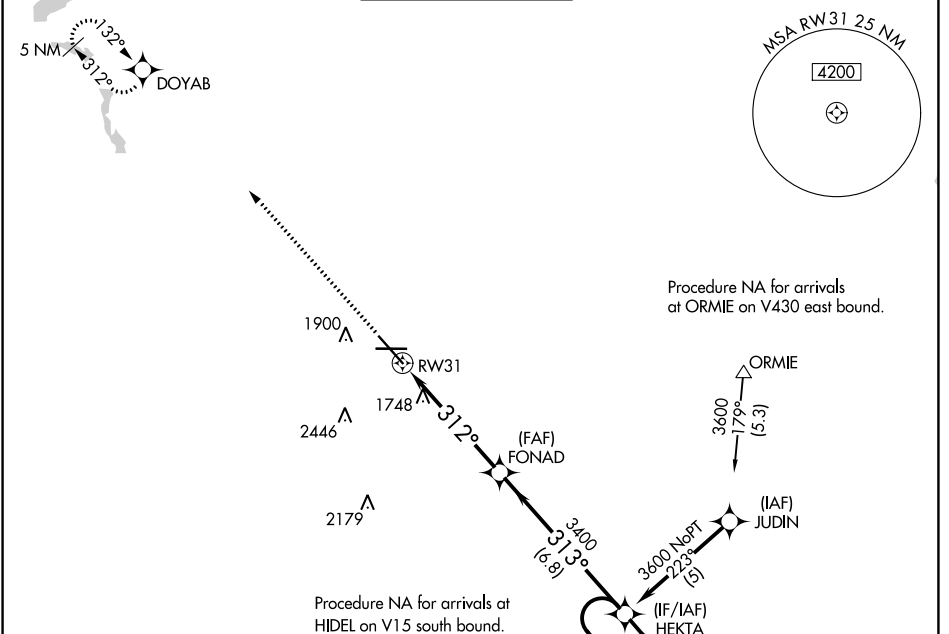
WAAS CH 66099 W31A	APP CRS 312°	Rwy Idg TDZE Apt Elev	7700 1679 1716
--	------------------------	-----------------------------	---

RNAV (GPS) RWY 31

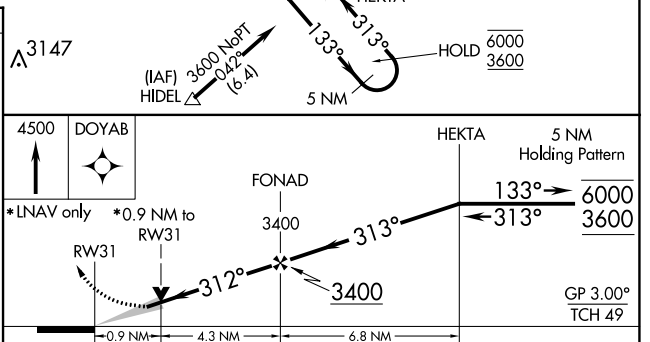
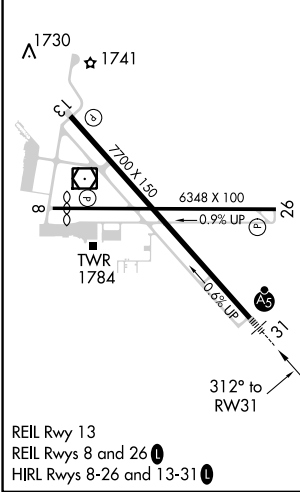
MINOT INTL (MOT)

RNP APCH. V A For uncompensated Baro-VNAV systems, LNAV/VNAV NA below -18°C or above 54°C. For inop ALS increase LNAV/VNAV visibility to RVR 4500.	MALSR AS	MISSED APPROACH: Climb to 4500 direct DOYAB and hold.
---	-------------	---

ASOS 118.725	MINOT APP CON * 119.6 363.8	MAGIC CITY TOWER * 118.2(CTAF) 251.125	GND CON 121.9	UNICOM 122.95
------------------------	---------------------------------------	--	-------------------------	-------------------------



ELEV 1716	D	TDZE 1679
-----------	---	-----------



CATEGORY	A	B	C	D
LPV DA	1929/24 250 (300-1/2)			
LNAV/VNAV DA	1966/24 287 (300-1/2)			1966/40 287 (300-3/4)
LNAV MDA	2000/24	321 (300-1/2)	2000/26 321 (300-1/2)	2000/50 321 (300-1)
CIRCLING	2200-1 484 (500-1)	2240-1 524 (600-1)	2800-3 1084 (1100-3)	

NC-1, 26 DEC 2024 to 23 JAN 2025

NC-1, 26 DEC 2024 to 23 JAN 2025