

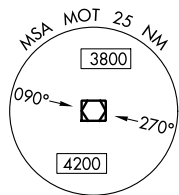
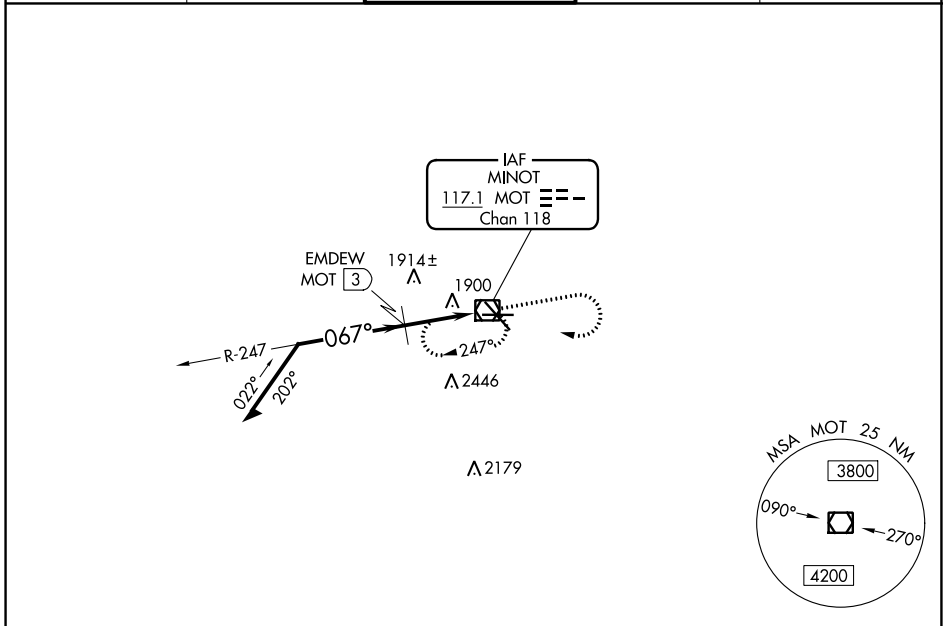
VOR/DME MOT 117.1 Chan 118	APP CRS 067°	Rwy Idg TDZE 1712 Apt Elev 1716
--	------------------------	---

VOR RWY 8

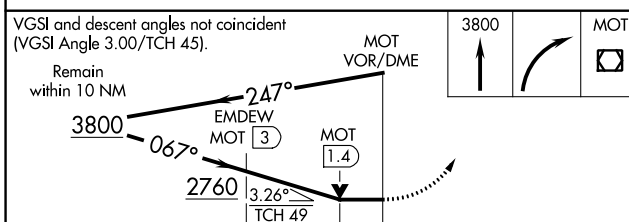
MINOT INTL (MOT)

▼ Rwy 8 helicopter visibility reduction below ¾ NM.
▲ MISSED APPROACH: Climb to 3800 then right turn direct MOT VOR/DME and hold.

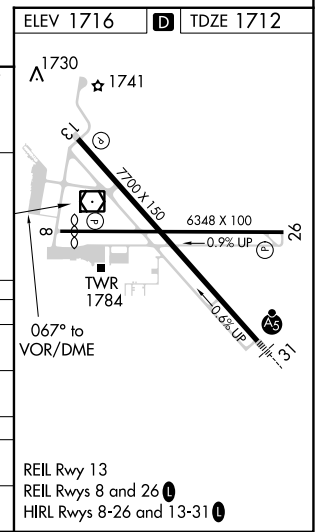
ASOS 118.725	MINOT APP CON * 119.6 363.8	MAGIC CITY TOWER * 118.2 (CTAF) 251.125	GND CON 121.9	UNICOM 122.95
------------------------	---------------------------------------	---	-------------------------	-------------------------



3149 ▲



CATEGORY	A	B	C	D
S-8	2760-1¼ 1048 (1100-1¼)	2760-1½ 1048 (1100-1½)	2760-3	1048 (1100-3)
CIRCLING	2760-1¼ 1044 (1100-1¼)	2760-1½ 1044 (1100-1½)	2800-3	1084 (1100-3)
EMDEW FIX MINIMUMS				
S-8	2180-1	468 (500-1)	2180-1⅜ 468 (500-1⅜)	2180-1½ 468 (500-1½)
CIRCLING	2200-1 484 (500-1)	2240-1 524 (600-1)	2800-3	1084 (1100-3)



NC-1, 26 DEC 2024 to 23 JAN 2025

NC-1, 26 DEC 2024 to 23 JAN 2025