

# HUUVR ONE ARRIVAL (RNAV)

EC-2, 26 DEC 2024 to 23 JAN 2025

CLEVELAND APP CON\*  
123.5 371.875  
CAK ATIS  
121.05

NOTE: RADAR required.  
NOTE: RNAV 1.  
NOTE: DME/DME/IRU or GPS required.

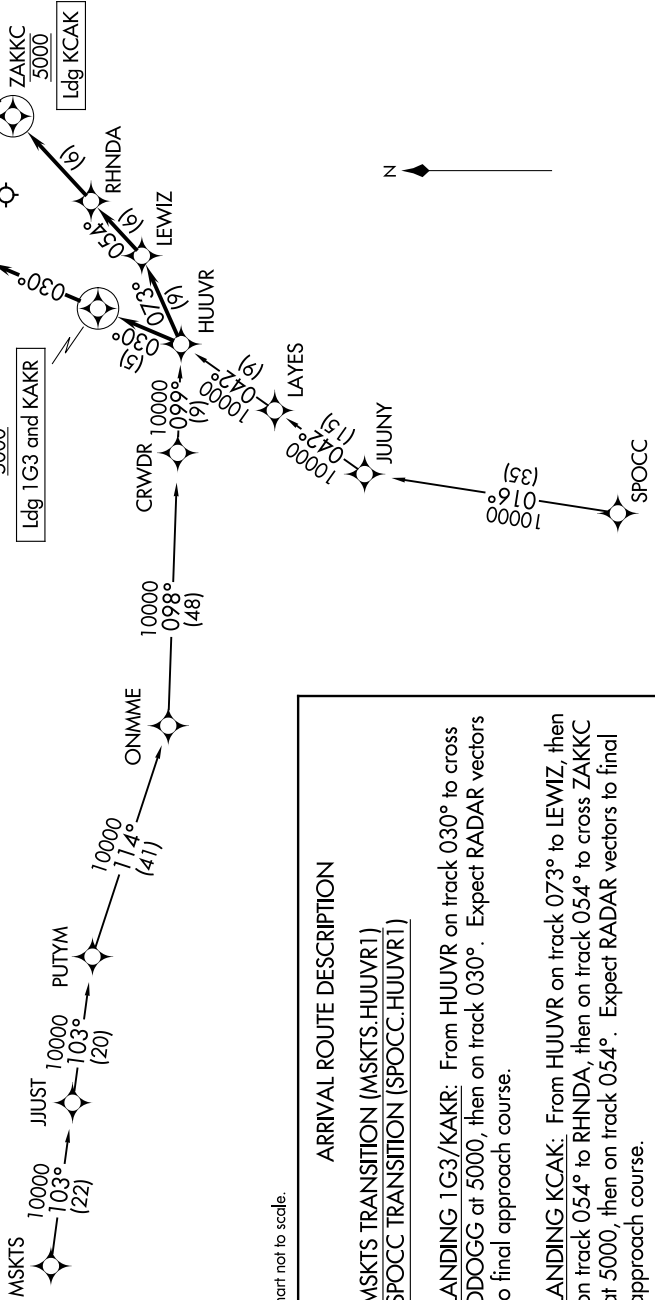


Chart not to scale.

**ARRIVAL ROUTE DESCRIPTION**

**MSKTS TRANSITION (MSKTS.HUUVR1)**  
**SPOCC TRANSITION (SPOCC.HUUVR1)**

**LANDING 1G3/KAKR:** From HUUVR on track 030° to cross DDOGG at 5000, then on track 030°. Expect RADAR vectors to final approach course.

**LANDING KCAK:** From HUUVR on track 073° to LEWIZ, then on track 054° to RHINDA, then on track 054° to cross ZAKKC at 5000, then on track 054°. Expect RADAR vectors to final approach course.

# HUUVR ONE ARRIVAL (RNAV)

EC-2, 26 DEC 2024 to 23 JAN 2025