

WAAS CH 90220 W23A	APP CRS 235°	Rwy Idg TDZE Apt Elev	8204 1226 1226
--	------------------------	-----------------------------	---

RNAV (GPS) RWY 23

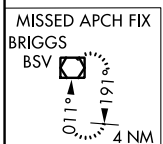
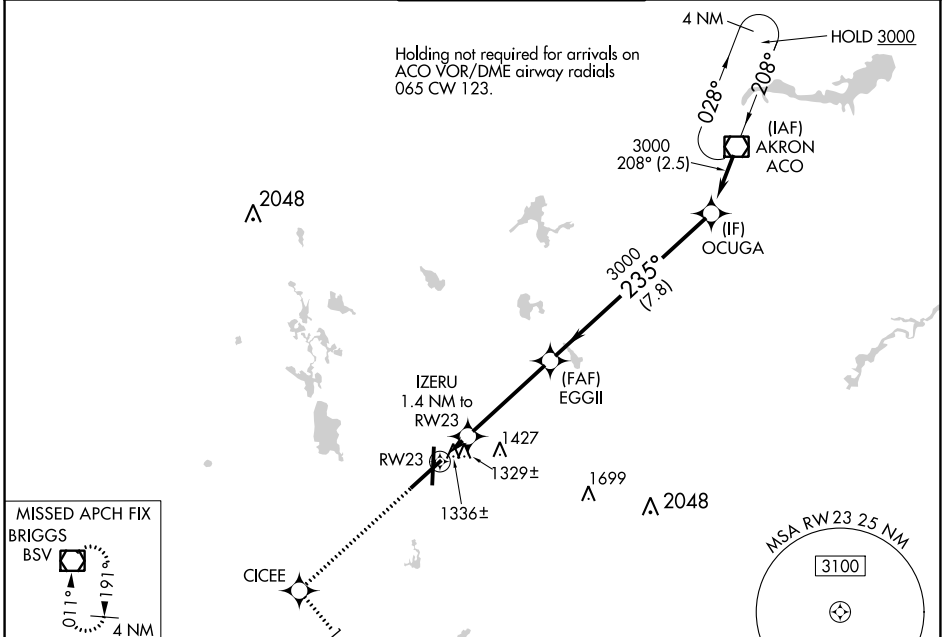
AKRON-CANTON RGNL (CAK)

▼ For uncompensated Baro-VNAV systems, LNAV/VNAV NA below -17°C (2°F) or above 46°C (114°F). DME/DME RNP-0.3 NA. For inoperative MALS, increase LNAV Cat D visibility to RVR 6000.
****** RVR 1800 authorized with use of FD or AP or HUD to DA.

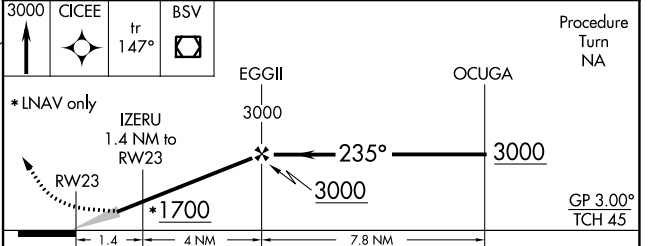
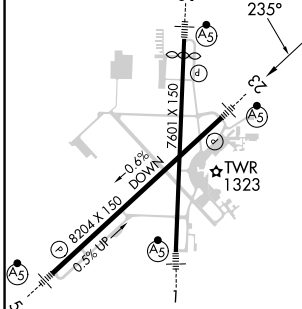


MALS
MISSED APPROACH: Climb to 3000 direct CICEE and on track 147° to BSV VOR/DME and hold.

ATIS 121.05	CLEVELAND APP CON* 125.5 269.25	AKRON-CANTON TOWER 134.75 279.575	GND CON 121.7 348.6	CLNC DEL 132.05
-----------------------	---	---	-------------------------------	---------------------------



ELEV 1226	D	TDZE 1226
-----------	----------	-----------



CATEGORY	A	B	C	D
LPV DA**		1426/24	200 (200-½)	
LNAV/VNAV DA		1691/60	465 (500-1¼)	
LNAV MDA	1640/24	414 (500-½)	1640/40 414 (500-¾)	1640/50 414 (500-1)
CIRCLING	1760-1	534 (600-1)	1780-1½ 554 (600-1½)	1800-2 574 (600-2)

EC-2, 26 DEC 2024 to 23 JAN 2025

EC-2, 26 DEC 2024 to 23 JAN 2025