

WAAS CH <b>69632</b> <b>W17A</b>	APP CRS <b>169°</b>	Rwy Idg TDZE Apt Elev	<b>4808</b> <b>39</b> <b>40</b>
--	------------------------	-----------------------------	---------------------------------------

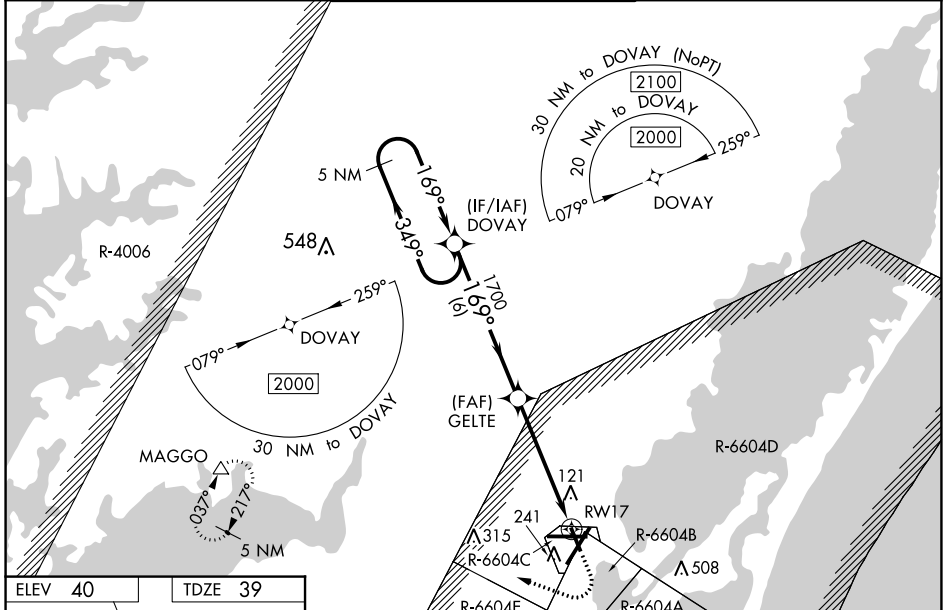
# RNAV (GPS) RWY 17

WALLOPS FLIGHT FACILITY (WAL)

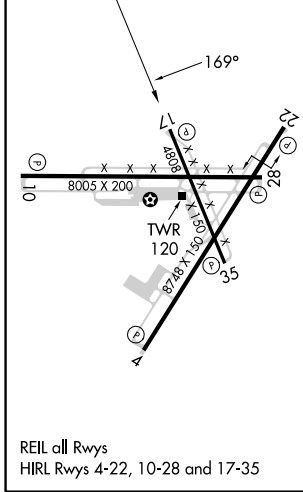
**⚠** For uncompensated Baro-VNAV systems, LNAV/VNAV NA below -11°C (13°F) or above 54°C (130°F). DME/DME RNP-0.3 NA. Helicopter visibility reduction below 3/4 SM NA. When local altimeter setting not received, use Salisbury altimeter setting; increase LPV DA to 372 and all Cats visibility 1/8 mile, increase LNAV/VNAV DA to 437 and all Cats visibility 1/4 mile, increase all MDA 60 feet and LNAV Cats C/D visibility 1/8 mile and Circling Cat C visibility 1/4 mile. Baro-VNAV and VDP NA when using Salisbury altimeter setting.

**MISSED APPROACH:** Climb to 600 then climbing right turn to 2000 direct MAGGO and hold.

ASOS <b>119.175</b>	PATUXENT APP CON * <b>127.95 314.0</b>	WALLOPS TOWER * <b>126.5 (CTAF) 0 306.975 (CTAF) 0</b>	GND CON <b>127.875 269.325</b>	CLNC DEL <b>121.7</b>
------------------------	---	---	-----------------------------------	--------------------------



ELEV 40	TDZE 39
---------	---------



CATEGORY		A	B	C	D
LPV	DA	322-1		283 (300-1)	
LNAV/VNAV	DA	387-1 1/8		348 (400-1 1/8)	
LNAV	MDA	500-1	461 (500-1)	500-1 3/8	461 (500-1 1/8)
<b>C</b>	CIRCLING	600-1	560 (600-1)	620-1 1/2 580 (600-1 1/2)	860-2 3/4 820 (900-2 3/4)

NE-3, 26 DEC 2024 to 23 JAN 2025

NE-3, 26 DEC 2024 to 23 JAN 2025