

WAAS CH 45534 W28A	APP CRS 281°	Rwy Idg TDZE Apt Elev	8005 40 40
--	------------------------	-----------------------------	---------------------------------------

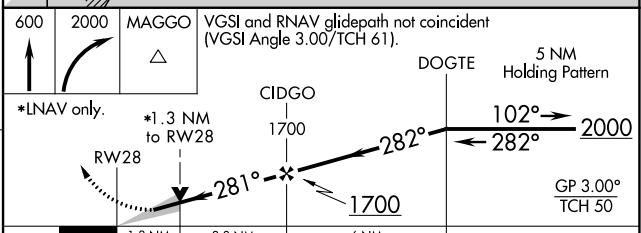
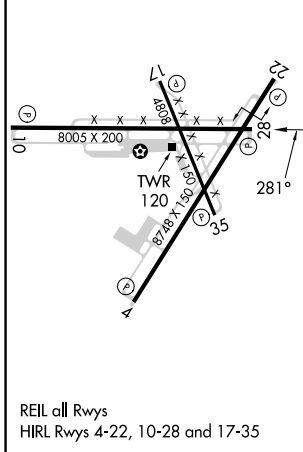
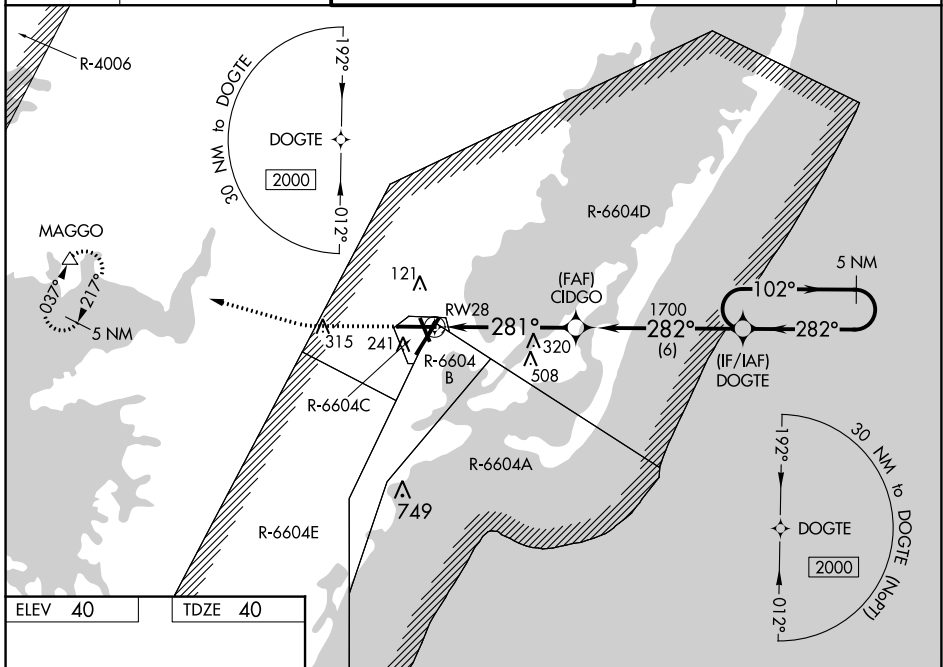
RNAV (GPS) RWY 28

WALLOPS FLIGHT FACILITY (WAL)

▼ For uncompensated Baro-VNAV systems, LNAV/VNAV NA below -11°C (13°F) or above 54°C (130°F). DME/DME RNP-0.3 NA. When local altimeter setting not received, use Salisbury altimeter setting: increase LPV DA to 343 and all Cats visibility ¼ mile; increase LNAV/VNAV DA to 453 and all Cats visibility ¼ mile; increase all MDA 60 feet and LNAV Cats C/D and Circling Cat C visibility ¼ mile. Baro-VNAV and YDP NA when using Salisbury altimeter setting.

▲ MISSED APPROACH: Climb to 600 then climbing right turn to 2000 direct MAGGO and hold.

ASOS 119.175	PATUXENT APP CON ★ 127.95 314.0	WALLOPS TOWER ★ 126.5 (CTAF) 306.975 (CTAF)	GND CON 127.875 269.325	CLNC DEL 121.7
------------------------	---	---	-----------------------------------	--------------------------



CATEGORY	A	B	C	D
LPV DA		290-¾	250 (300-¾)	
LNAV/VNAV DA		400-1½	360 (400-1½)	
LNAV MDA	520-1	480 (500-1)	520-1¾	480 (500-1½)
C CIRCLING	600-1	560 (600-1)	620-1½	860-2¾