

WAAS CH 53732 W35A	APP CRS 349°	Rwy Idg TDZE Apt Elev	4808 39 40
--	------------------------	-----------------------------	---------------------------------------

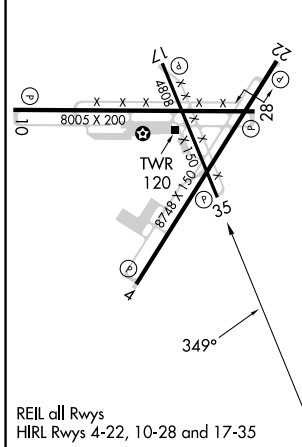
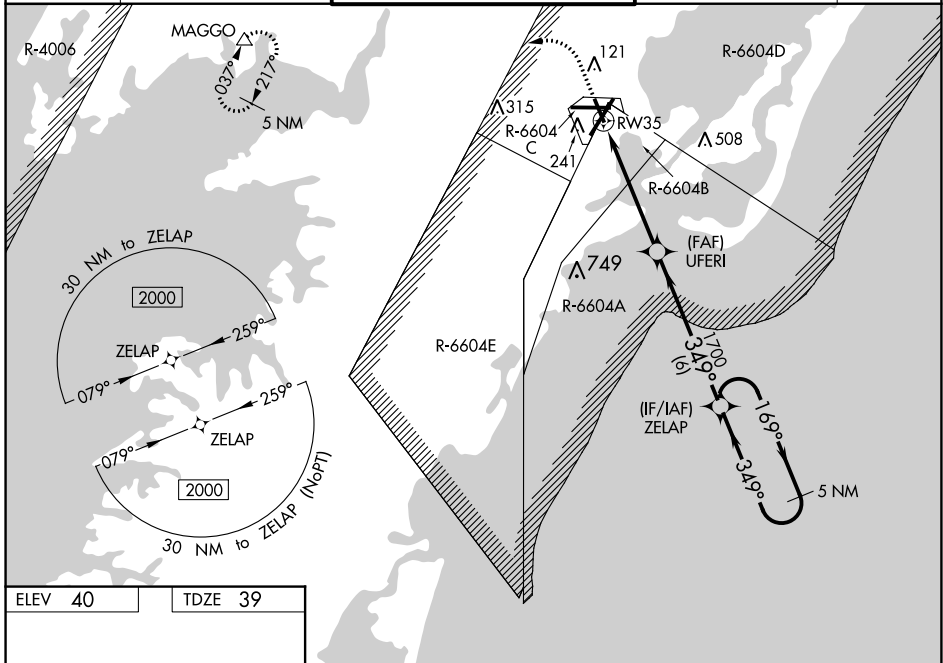
RNAV (GPS) RWY 35

WALLOPS FLIGHT FACILITY (WAL)

⚠ For uncompensated Baro-VNAV systems, LNAV/VNAV NA below -11°C (13°F) or above 54°C (130°F). DME/DME RNP-0.3 NA. When local altimeter setting not received, use Salisbury altimeter setting; increase LPV DA to 343; increase LNAV/VNAV DA to 464 and all Cats visibility ¼ mile; increase all MDA 60 feet and LNAV Cats C/D visibility ½ mile and Circling Cat C visibility ¼ mile. Baro-VNAV and VDP NA when using Salisbury altimeter setting. Helicopter visibility reduction below ¾ SM NA. Procedure NA when R-6604 active.

MISSED APPROACH: Climb to 600 then climbing left turn to 2000 direct MAGGO and hold.

ASOS 119.175	PATUXENT APP CON ★ 127.95 314.0	WALLOPS TOWER ★ 126.5 (CTAF) 0 306.975 (CTAF) 0	GND CON 127.875 269.325	CLNC DEL 121.7
------------------------	---	---	-----------------------------------	--------------------------



NE-3, 26 DEC 2024 to 23 JAN 2025

NE-3, 26 DEC 2024 to 23 JAN 2025