

VORTAC SBY <b>111.2</b> Chan 49	APP CRS SBY [24.1] Arc	Rwy Idg TDZE Apt Elev	<b>8005</b> <b>38</b> <b>40</b>
---------------------------------------	---------------------------	-----------------------------	---------------------------------------

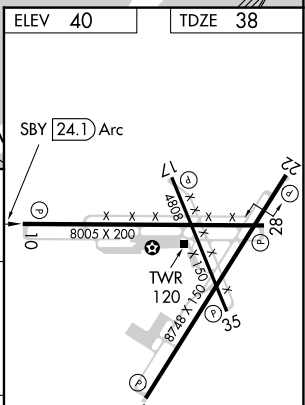
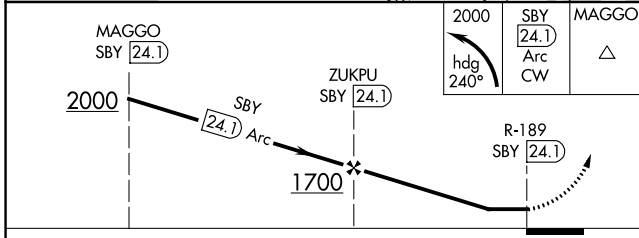
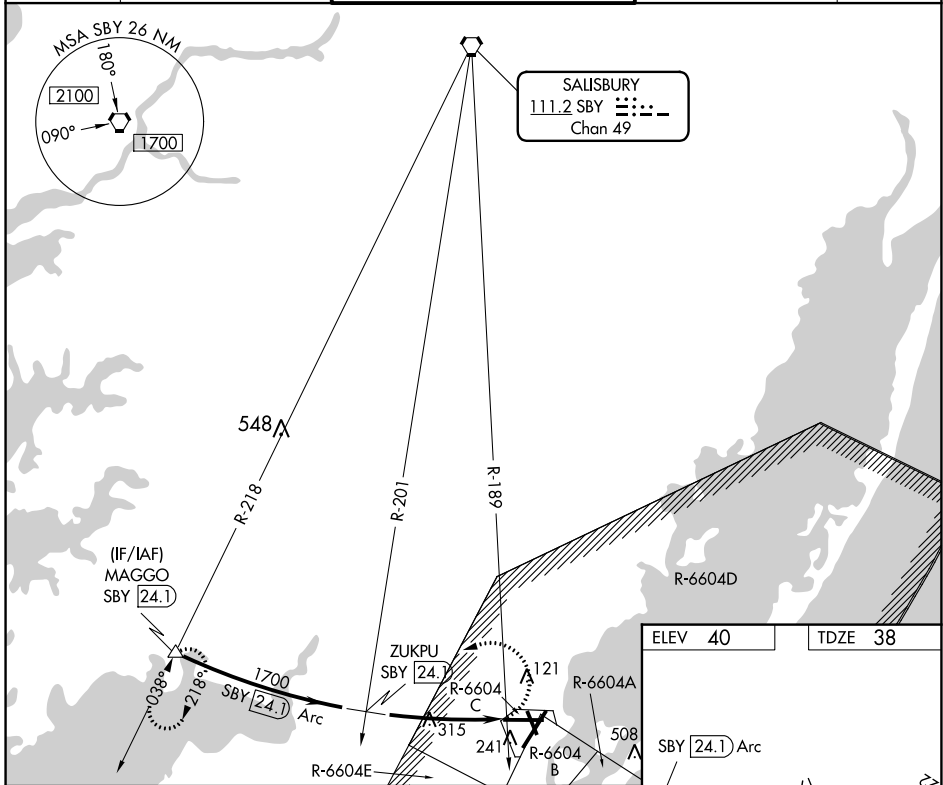
# VOR/DME or TACAN RWY 10

WALLOPS FLIGHT FACILITY (WAL)

**⚠** When local altimeter setting not received, use Salisbury altimeter setting and increase all MDA 60 feet and Circling Cats C/D visibility ¼ mile. Helicopter visibility reduction below ¾ SM NA.

**MISSED APPROACH:** Climbing left turn to 2000 on heading 240° and SBY VORTAC 24.1 DME Arc clockwise to MAGGO/SBY 24.1 DME and hold.

ASOS <b>119.175</b>	PATUXENT APP CON ★ <b>127.95 314.0</b>	WALLOPS TOWER ★ <b>126.5 (CTAF) 0 306.975 (CTAF) 0</b>	GND CON <b>127.875 269.325</b>	CLNC DEL <b>121.7</b>
------------------------	---	---	-----------------------------------	--------------------------



CATEGORY	A	B	C	D
S-10	900-1¼	862 (900-1¼)	900-2½	862 (900-2½)
<b>C</b> CIRCLING	900-1¼	860 (900-1¼)	900-2½ 860 (900-2½)	900-2¾ 860 (900-2¾)

REIL all Rwys  
HIRL Rws 4-22, 10-28 and 17-35

NE-3, 26 DEC 2024 to 23 JAN 2025

NE-3, 26 DEC 2024 to 23 JAN 2025