

VORTAC SWL 112.4 Chan 71	APP CRS 190°	Rwy Idg 4808 TDZE 39 Apt Elev 40
---------------------------------------	------------------------	---

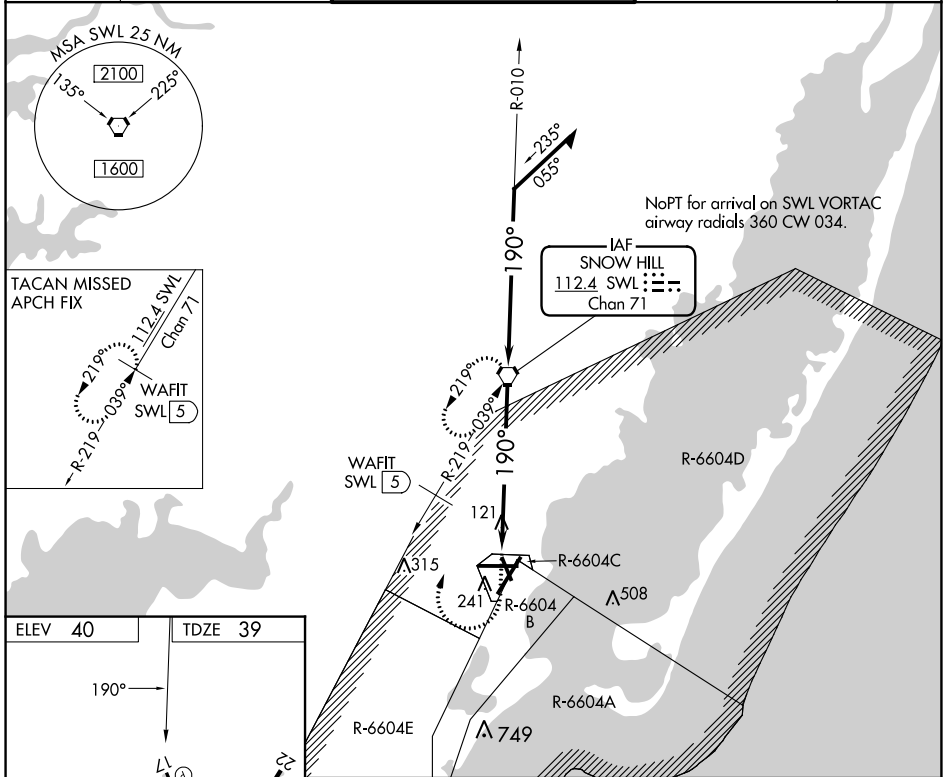
VOR or TACAN RWY 17

WALLOPS FLIGHT FACILITY (WAL)

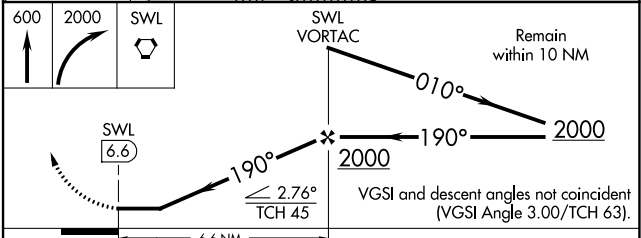
⚠ When local altimeter setting not received, use Salisbury altimeter setting and increase all MDA 60 feet and S-17 Cats C/D and Circling Cat C visibility ¼ mile. Helicopter visibility reduction below ¾ SM NA.

MISSED APPROACH: Climb to 600 then climbing right turn to 2000 direct SWL VORTAC and hold. (TACAN aircraft climb to 600 then climbing right turn to 2000 on heading 300° and SWL VORTAC R-219 to WAFIT/SWL 5 DME and hold SW, LT 039° inbound.)

ASOS 119.175	PATUXENT APP CON ★ 127.95 314.0	WALLOPS TOWER ★ 126.5 (CTAF) 0 306.975 (CTAF) 0	GND CON 127.875 269.325	CLNC DEL 121.7
------------------------	---	---	-----------------------------------	--------------------------



ELEV 40	TDZE 39
190°	
REIL all Rwys	
HIRL Rwys 4-22, 10-28 and 17-35	
FAF to MAP 6.6 NM	
Knots	60 90 120 150 180
Min:Sec	6:36 4:24 3:18 2:38 2:12



CATEGORY	A	B	C	D
S-17	540-1 501 (500-1)		540-1⅜ 501 (500-1⅜)	
C CIRCLING	600-1 560 (600-1)		620-1½ 580 (600-1½)	860-2¾ 820 (900-2¾)

NE-3, 26 DEC 2024 to 23 JAN 2025

NE-3, 26 DEC 2024 to 23 JAN 2025