

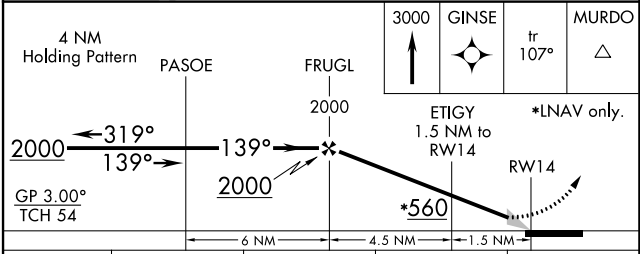
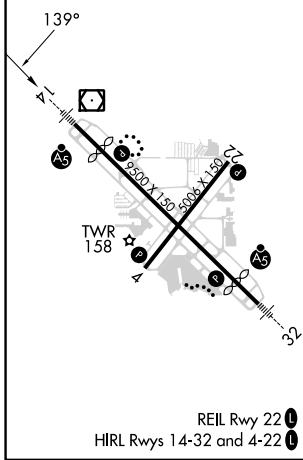
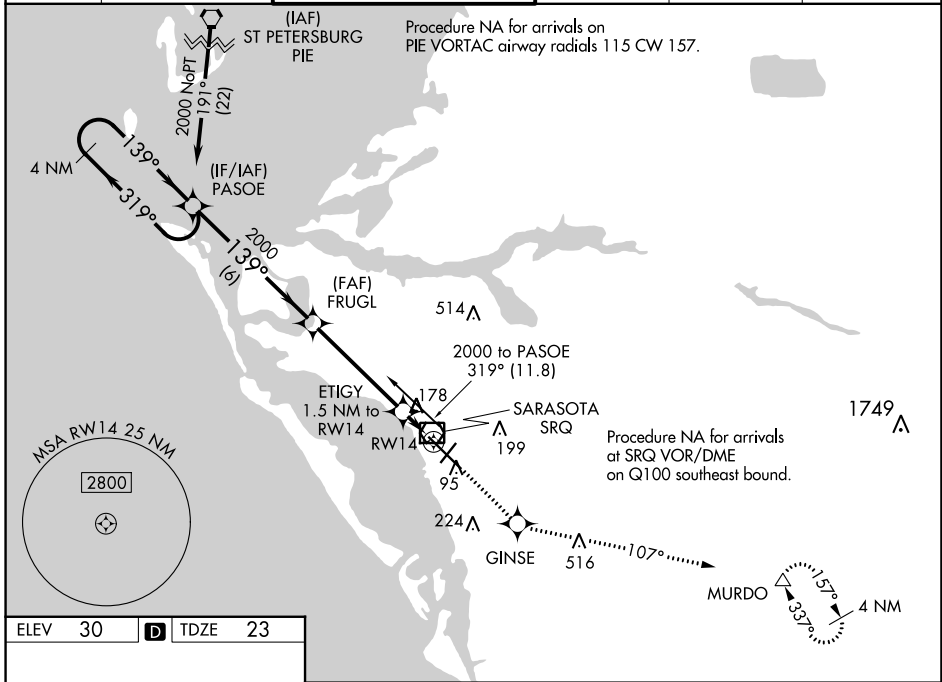
WAAS CH 86705 W 14A	APP CRS 139°	Rwy Idg 7540 TDZE 23 Apt Elev 30
---	------------------------	---

RNAV (GPS) RWY 14

SARASOTA/BRADENTON INTL (SRQ)

RNP APCH. ▼ For uncompensated Baro-VNAV systems, LNAV/VNAV NA below -15°C or above 43°C. When control tower closed, LPV and LNAV/VNAV NA; increase LNAV all Cats visibility to 1 mile. When control tower closed, inop table does not apply to LNAV Cats A and B. When control tower closed, for inop MALSR, increase LNAV Cats C and D visibility to 1½ mile.	MALSR 	MISSED APPROACH: Climb to 3000 direct GINSE and on track 107° to MURDO and hold.
---	-----------	--

ATIS 124.375	TAMPA APP CON 119.65 353.575	SARASOTA TOWER ★ 120.1(CTAF) 0 256.8	GND CON 121.9 273.6	CLNC DEL 118.25	UNICOM 122.95
------------------------	--	--	-------------------------------	---------------------------	-------------------------



CATEGORY	A	B	C	D
LPV DA		223-½	200 (200-½)	
LNAV/VNAV DA		489-1⅛	466 (500-1⅛)	
LNAV MDA	440-½	417 (500-½)	440-¾	417 (500-¾)
CIRCLING	500-1	470 (500-1)	600-1½ 570 (600-1½)	600-2 570 (600-2)

SE-3, 26 DEC 2024 to 23 JAN 2025

SE-3, 26 DEC 2024 to 23 JAN 2025