

WAAS CH 99420 W04A	APP CRS 043°	Rwy Idg 5006 TDZE 23 Apt Elev 30
--	------------------------	---

RNAV (GPS) RWY 4

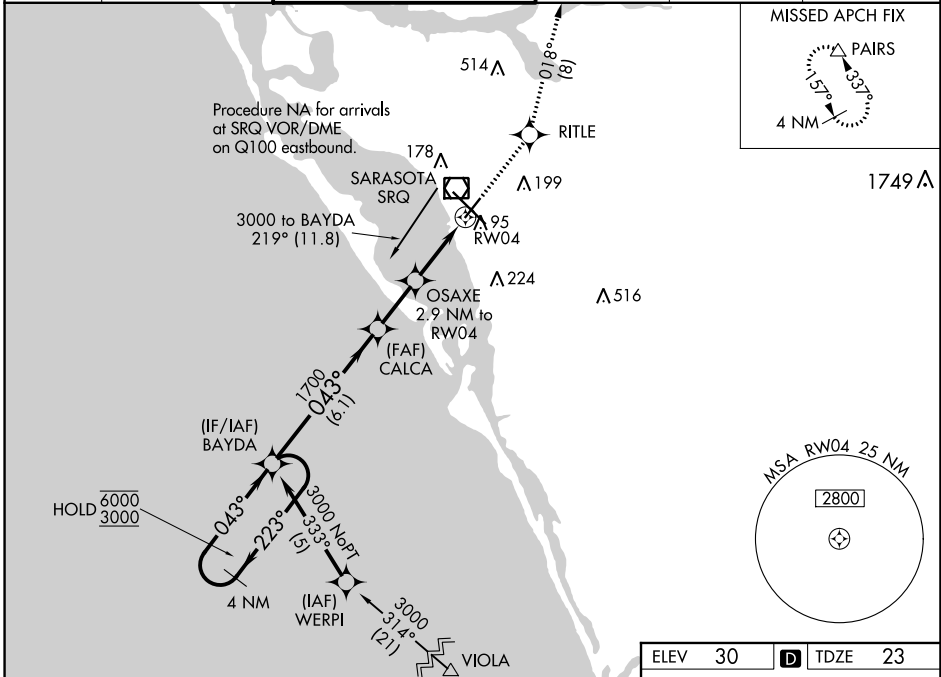
SARASOTA/BRADENTON INTL (SRQ)

RNP APCH.

▼ Rwy 4 helicopter visibility reduction below 3/4 SM NA.
For uncompensated Baro-VNAV systems, LNAV/VNAV NA below -15°C or above 43°C.

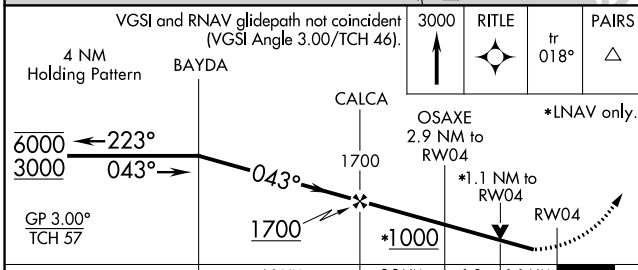
MISSED APPROACH: Climb to 3000 direct RITL and on track 018° to PAIRS and hold, continue climb-in-hold to 3000.

ATIS 124.375	TAMPA APP CON 119.65 353.575	SARASOTA TOWER ★ 120.1(CTAF) 0 256.8	GND CON 121.9 273.6	CLNC DEL 118.25	UNICOM 122.95
------------------------	--	--	-------------------------------	---------------------------	-------------------------



SE-3, 26 DEC 2024 to 23 JAN 2025

SE-3, 26 DEC 2024 to 23 JAN 2025



ELEV 30	D TDZE 23
---------	------------------

CATEGORY	A	B	C	D
LPV DA		317-1	294 (300-1)	
LNAV/VNAV DA		319-1	296 (300-1)	
LNAV MDA	420-1	397 (400-1)	420-1 1/8	397 (400-1 1/8)
CIRCLING	500-1	470 (500-1)	600-1 1/2	600-2
			570 (600-1 1/2)	570 (600-2)

