

APP CRS	Rwy Idg	7000
300°	TDZE	1232
	Apt Elev	1249

RNAV (RNP) Z RWY 30

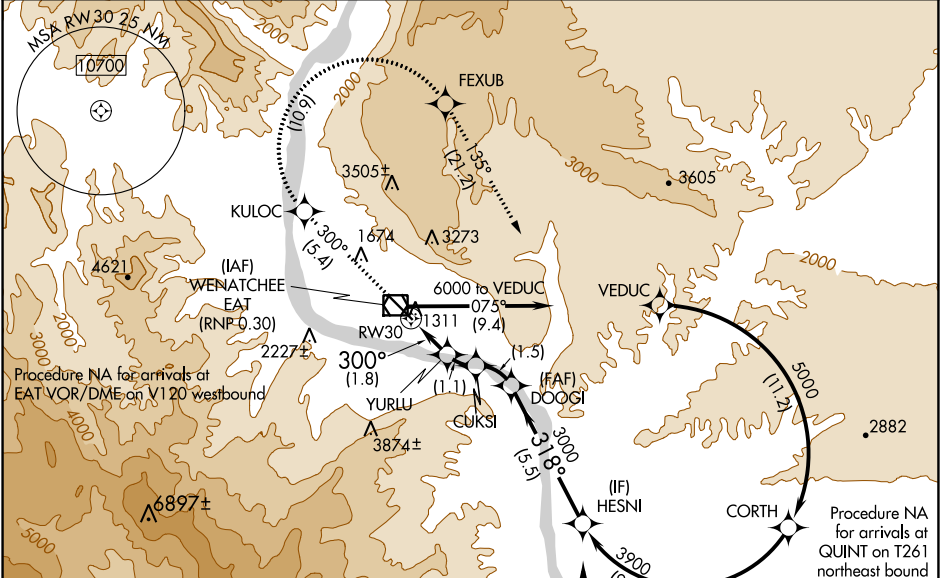
PANGBORN MEML (EAT)

⚠ -7°C For uncompensated Baro-VNAV systems, procedure NA below -10°C (14°F) or above 44°C (111°F). RF required. GPS required. FD or HUD required.

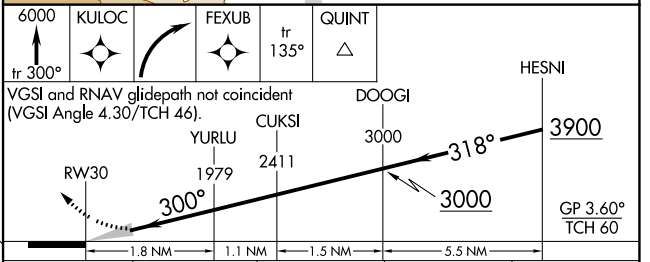
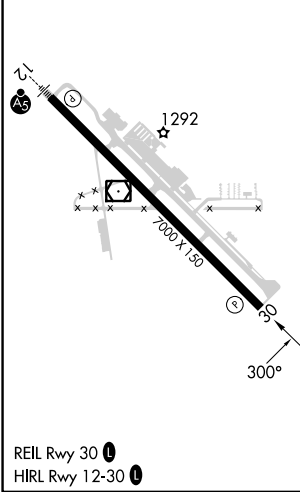
MISSED APPROACH: Climb to 6000 on track 300° to KULOC, right turn to FEXUB, and on track 135° to QUINT and hold.

* Missed approach requires minimum climb of 320 feet per NM to 5500.
 # Missed approach requires minimum climb of 325 feet per NM to 5500.

ASOS 119.925	SEATTLE CENTER 126.1	UNICOM 123.0 (CTAF) 0
------------------------	--------------------------------	---------------------------------



ELEV 1249	D	TDZE 1232
-----------	----------	-----------



CATEGORY	A	B	C	D
RNP 0.17 DA*	1595-1		363 (400-1)	NA
RNP 0.30 DA#	1686-1 3/8		454 (500-1 3/8)	NA

AUTHORIZATION REQUIRED

NW-1, 26 DEC 2024 to 23 JAN 2025

NW-1, 26 DEC 2024 to 23 JAN 2025