

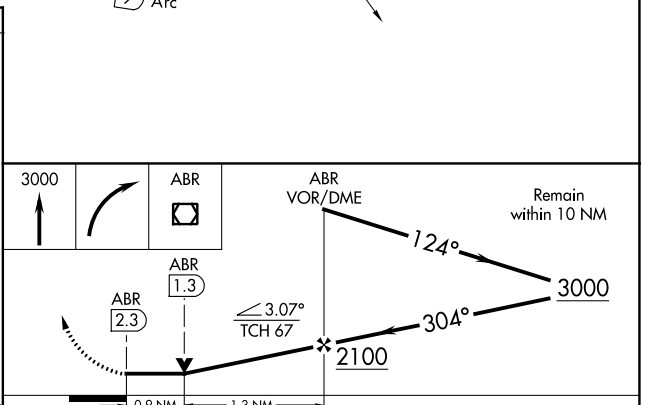
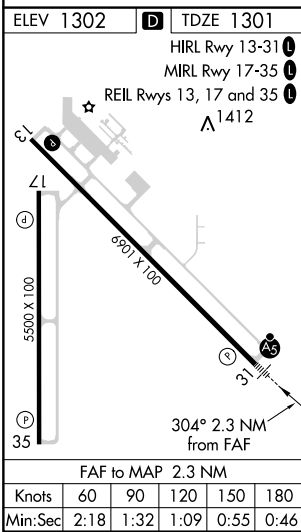
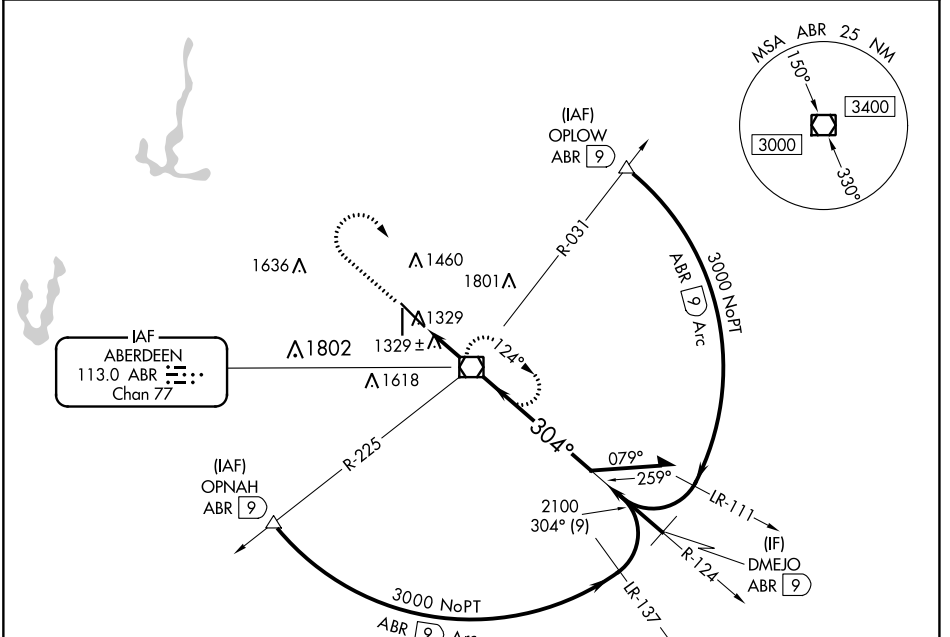
VOR/DME ABR 113.0 Chan 77	APP CRS 304°	Rwy Idg 6901	TDZE 1301
		Apt Elev 1302	

VOR RWY 31

ABERDEEN RGNL (ABR)

	For inop ALS, increase S-31 Cat C visibility to 1 SM.		MISSED APPROACH: Climb to 3000 then right turn direct ABR VOR/DME and hold.

ASOS 125.875	MINNEAPOLIS CENTER 120.6 371.9	UNICOM 122.7 (CTAF)
------------------------	--	-------------------------------



NC-1, 26 DEC 2024 to 23 JAN 2025

NC-1, 26 DEC 2024 to 23 JAN 2025