

| | | | |
|--|------------------------|-----------------------------|---------------------------------------|
| WAAS CH 60938 W05A | APP CRS 054° | Rwy Idg TDZE Apt Elev | 5400 70 79 |
|--|------------------------|-----------------------------|---------------------------------------|

RNAV (GPS) RWY 5

NEW BEDFORD RGNL (E/WB)

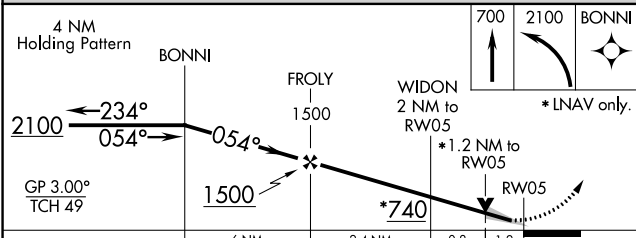
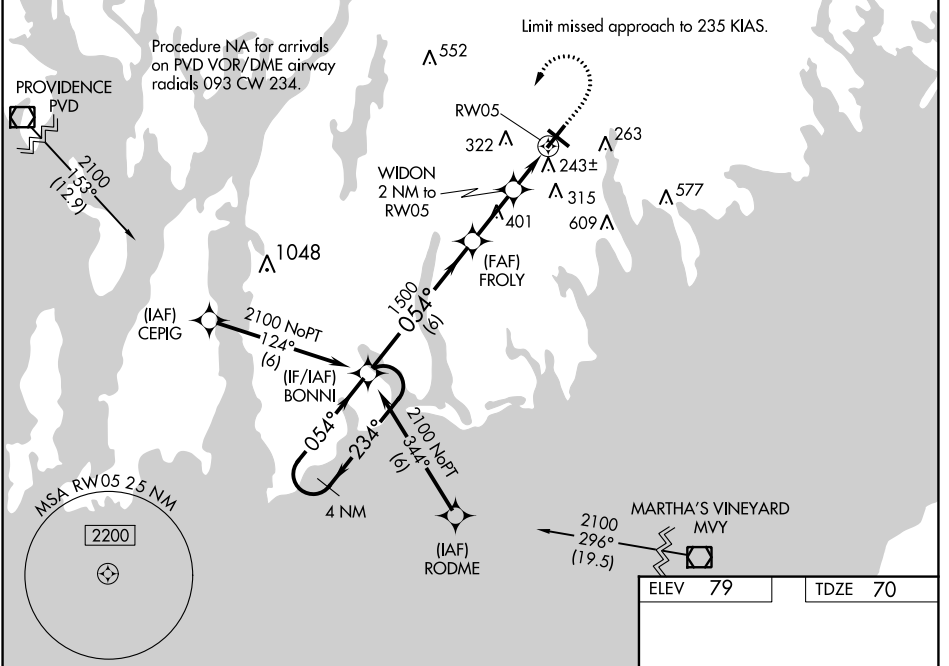
RNP APCH-GPS.

Baro-VNAV and VDP NA when using Taunton altimeter setting. For uncompensated Baro-VNAV systems, LNAV/VNAV NA below -16°C or above 54°C. When local altimeter setting not received, use Taunton altimeter setting and increase LPV DA to 304 feet, increase LNAV/VNAV DA to 487 feet and all visibilities to RVR 5000; increase all MDA 40 feet and LNAV Cats C/D visibility to RVR 5000. For inop MALS, when using Taunton altimeter setting, increase LPV all Cats visibility to RVR 4500, LNAV/VNAV all Cats and LNAV Cat C/D visibility to 1½ miles. ** RVR 1800 authorized with use of FD or AP or HUD to DA, NA when using Taunton altimeter setting.

MALS

MISSED APPROACH:
Climb to 700 then climbing left turn to 2100 direct BONNI and hold.

| | | | | |
|-----------------------|---|---|-------------------------|-------------------------|
| ATIS 126.85 | PROVIDENCE APP CON* 128.7 269,525 | NEW BEDFORD TOWER* 118.1 (CTAF) 0 239.0 | GND CON 121.9 | UNICOM 122.95 |
|-----------------------|---|---|-------------------------|-------------------------|



| | |
|---------|---------|
| ELEV 79 | TDZE 70 |
|---------|---------|

MIRS Rwy 14-32

HIRL Rwy 5-23

REIL Rwy 32

TWR 126

5000 X 150

5000 X 75

0.3% UP

| CATEGORY | A | B | C | D |
|--------------|----------------------|----------------------|------------------------|----------------------|
| LPV DA ** | | 270/24 | 200 (200-½) | |
| LNAV/VNAV DA | | 453/45 | 383 (400-¾) | |
| LNAV MDA | 500/24 | 430 (500-½) | 500/40 | 430 (500-¾) |
| CIRCLING | 620-1 541 (600-1) | 640-1 561 (600-1) | 720-1¾ 641 (700-1¾) | 960-3 881 (900-3) |

NE-1, 26 DEC 2024 to 23 JAN 2025

NE-1, 26 DEC 2024 to 23 JAN 2025