

APP CRS	Rwy Idg	5395
051°	TDZE	716
	Apt Elev	721

RNAV (GPS) RWY 5

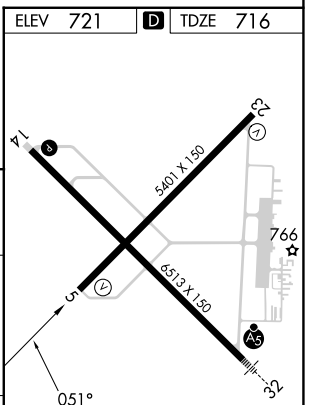
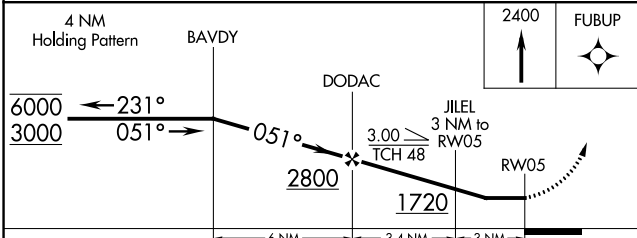
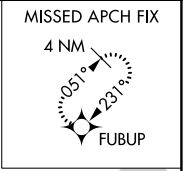
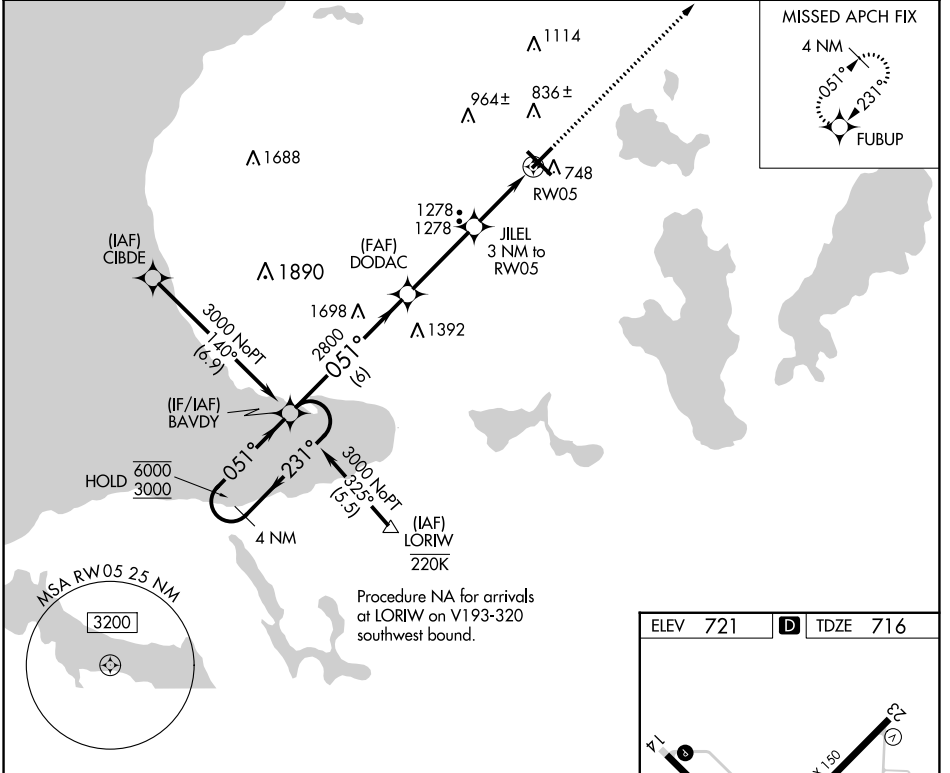
PELLSTON RGNL/EMMET COUNTY (PLN)

RNP APCH - GPS.

▼ Rwy 5 helicopter visibility reduction below 1 SM NA.
▲ When local altimeter setting not received, use MGN altimeter setting and increase all MDAs 40 feet, and LNAV visibility Cat A ¼ SM. Straight-in Rwy 5 NA at night, Circling Rwy 5, 14 NA at night.

MISSED APPROACH: Climb to 2400 direct FUBUP and hold.

ASOS 119.025	MINNEAPOLIS CENTER 134.6 354.05	UNICOM 123.0 (CTAF) 0
------------------------	---	---------------------------------



CATEGORY	A	B	C	D
LNAV MDA	1560-1 844 (900-1)	1560-1¼ 844 (900-1¼)	1560-2½ 844 (900-2½)	844 (900-2½)
CIRCLING	1560-1¼	839 (900-1¼)	1560-2½ 839 (900-2½)	1660-3 939 (1000-3)

HIRL Rwy 14-32 **0**
 MIRL Rwy 5-23 **0**
 REIL Rws 5, 14, and 23 **0**

EC-1, 26 DEC 2024 to 23 JAN 2025

EC-1, 26 DEC 2024 to 23 JAN 2025