

VORTAC PLN	APP CRS	Rwy Idg	5395
111.8	245°	TDZE	721
Chan 55		Apt Elev	721

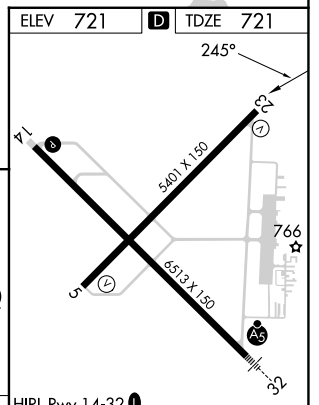
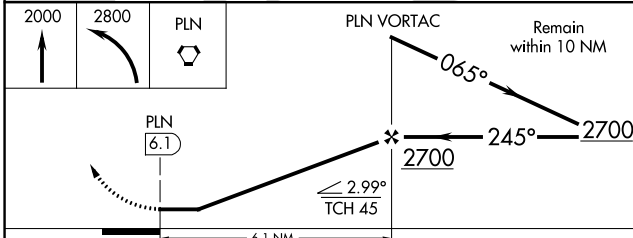
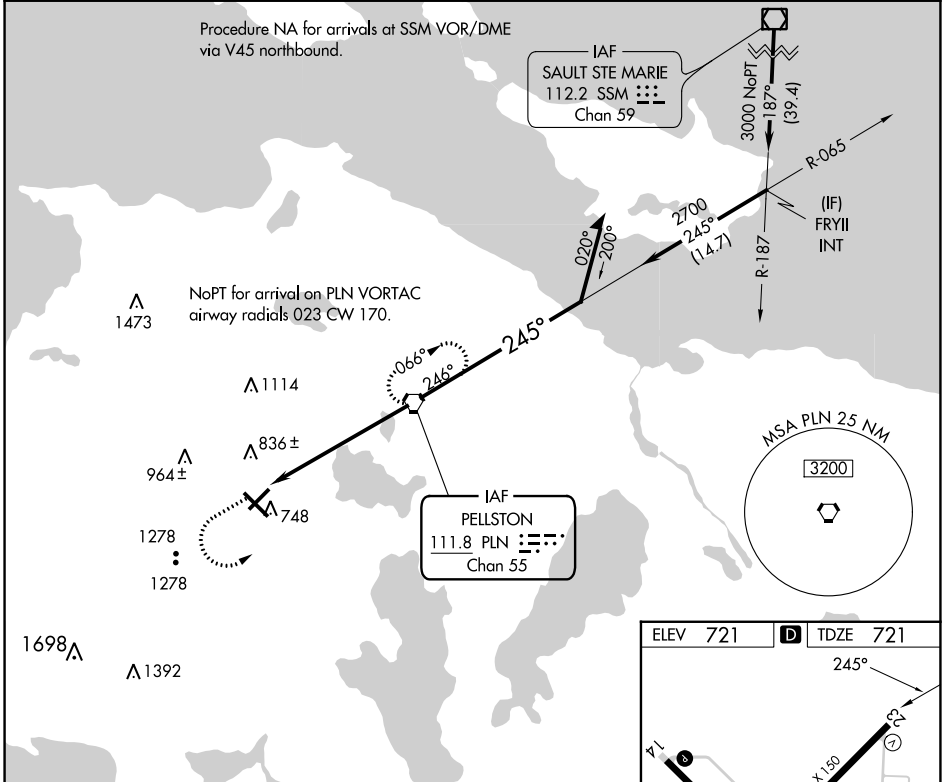
VOR RWY 23

PELLSTON RGNL/EMMET COUNTY (PLN)

⚠ When local altimeter setting not received, use Harbor Springs altimeter setting: increase all MDA 40 feet and visibility S-23 Cat C and D ¼ SM.
⚠ Rwy 23 helicopter visibility reduction below 1 SM NA.
 Straight-in Rwy 23 NA at night, Circling Rwy 5, 14, 23 NA at night.

MISSED APPROACH: Climb to 2000 then climbing left turn to 2800 direct PLN VORTAC and hold.

ASOS 119.025	MINNEAPOLIS CENTER 134.6 354.05	UNICOM 123.0 (CTAF) 0
------------------------	---	---------------------------------



CATEGORY	A	B	C	D
S-23	1300-1 579 (600-1)	579 (600-1)	1300-1½ 579 (600-1½)	1300-1¾ 579 (600-1¾)
CIRCLING	1300-1 579 (600-1)	1320-1 599 (600-1)	1560-2½ 839 (900-2½)	1660-3 939 (1000-3)

HIRL Rwy 14-32 0					
MIRL Rwy 5-23 0					
REIL Rwys 5, 14, and 23 0					
FAF to MAP 6.1 NM					
Knots	60	90	120	150	180
Min:Sec	6:06	4:04	3:03	2:26	2:02

EC-1, 26 DEC 2024 to 23 JAN 2025

EC-1, 26 DEC 2024 to 23 JAN 2025