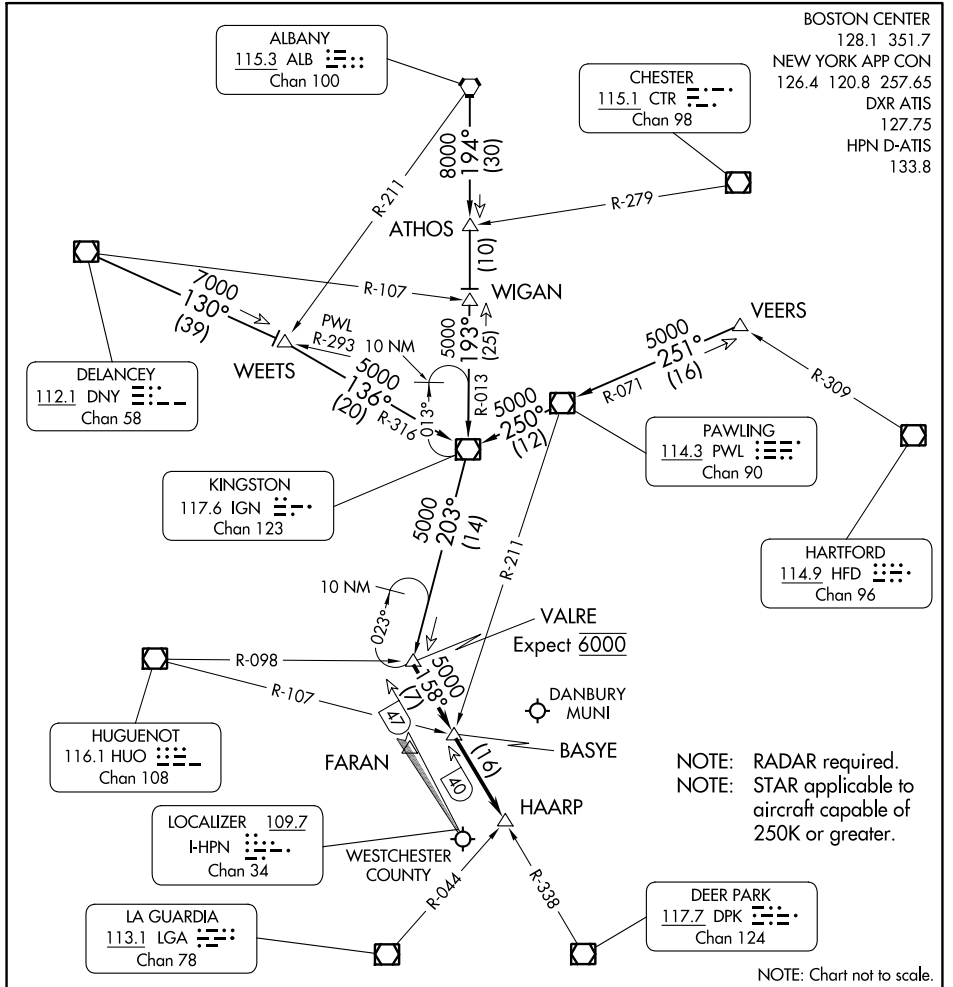


# VALRE FIVE ARRIVAL

WHITE PLAINS, NEW YORK



NE-2, 26 DEC 2024 to 23 JAN 2025

NE-2, 26 DEC 2024 to 23 JAN 2025

## ARRIVAL ROUTE DESCRIPTION

**ALBANY TRANSITION (ALB.VALRE5):** From over ALB VORTAC on ALB R-194 to WIGAN INT, then on IGN R-013 to IGN VOR/DME, then on IGN R-203 to VALRE INT. Thence. . . .

**DELANCEY TRANSITION (DNY.VALRE5):** From over DNY VOR/DME on DNY R-130 to WEETS INT, then on IGN R-316 to IGN VOR/DME, then on IGN R-203 to VALRE INT. Thence. . . .

**VEERS TRANSITION (VEERS.VALRE5):** From over VEERS INT on PWL R-071 to PWL VOR/DME, then on PWL R-250 to IGN VOR/DME, then on IGN R-203 to VALRE INT. Thence. . . .

. . . .from over VALRE INT on DPK R-338 to BASYE INT, then to HAARP INT. Expect RADAR vectors to final approach course prior to HAARP INT.

# VALRE FIVE ARRIVAL

(VALR.VALRE5) 17OCT13

WHITE PLAINS, NEW YORK