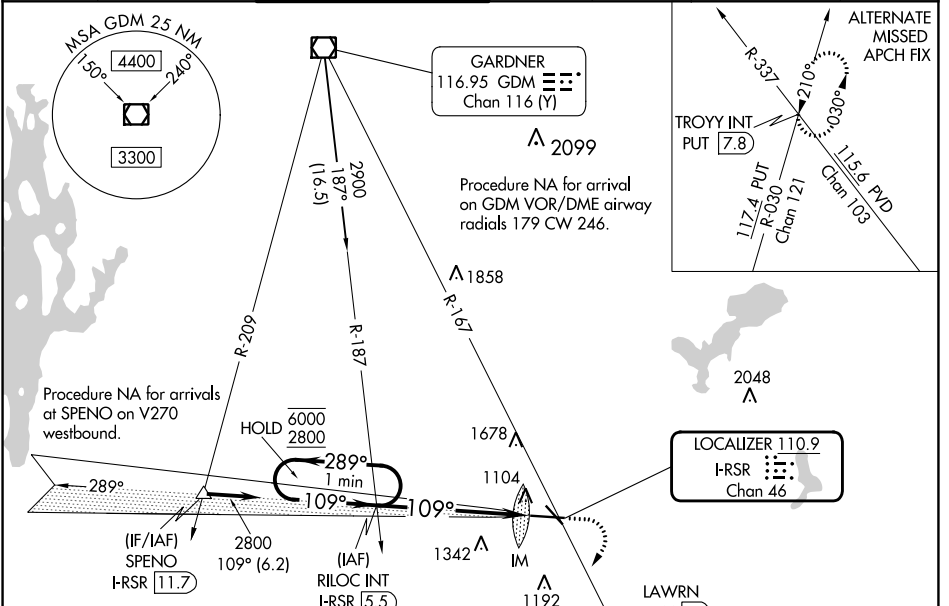


LOC/DME I-RSR 110.9 Chan 46	APP CRS 109°	Rwy ldg TDZE Apt Elev	7001 980 1009
--	------------------------	-----------------------------	--

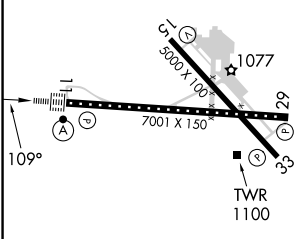
ILS or LOC RWY 11

WORCESTER RGNL (ORH)

<p>▼ For inop ALS, increase S-LOC 11 Cats C and D visibility to 1 1/2 SM. When control tower closed: inop table does not apply to S-ILS 11 all Cats. When control tower closed: for inop ALS, increase S-LOC 11 Cat C and D visibility to 1 1/2 SM.</p> <p>▲ ALSF-2</p>		<p>MISSED APPROACH: Climb to 1800 then climbing right turn to 3100 on heading 230° and on GDM VOR/DME R-167 to LAWNRN/GDM 23 DME and hold, continue climb-in-hold to 3100.</p>				
ATIS 126.55	BRADLEY APP CON 119.0 327.1	WORCESTER TOWER ★ 120.5 (CTAF) 263.0	GND CON 123.85	CLNC DEL 128.65	CLNC DEL 119.0 (When twr closed)	UNICOM 122.95



ELEV 1009	D	TDZE 980
-----------	----------	----------



TDZ/CL Rwy 11					
REIL Rws 15, 29 and 33					
HIRL Rwy 11-29					
MIRL Rwy 15-33					
FAF to MAP 5.5 NM					
Knots	60	90	120	150	180
Min:Sec	5:30	3:40	2:45	2:12	1:50

1800	3100	GDM R-167	LAWNRN GDM 23	
↑	hdg 230°			
CATEGORY	A	B	C	D
S-ILS 11	1180/18		200 (200-1/2)	
S-LOC 11	1500/24	520 (500-1/2)	1500/55	520 (500-1)
C CIRCLING	1560-1 551 (600-1)	1740-1 731 (800-1)	2000-3	991 (1000-3)