

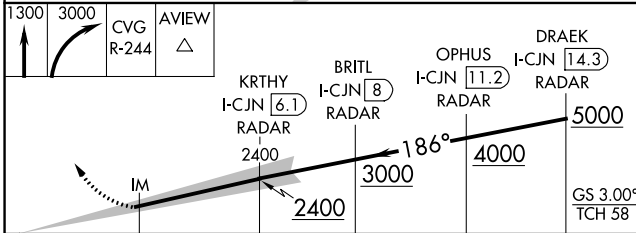
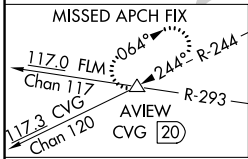
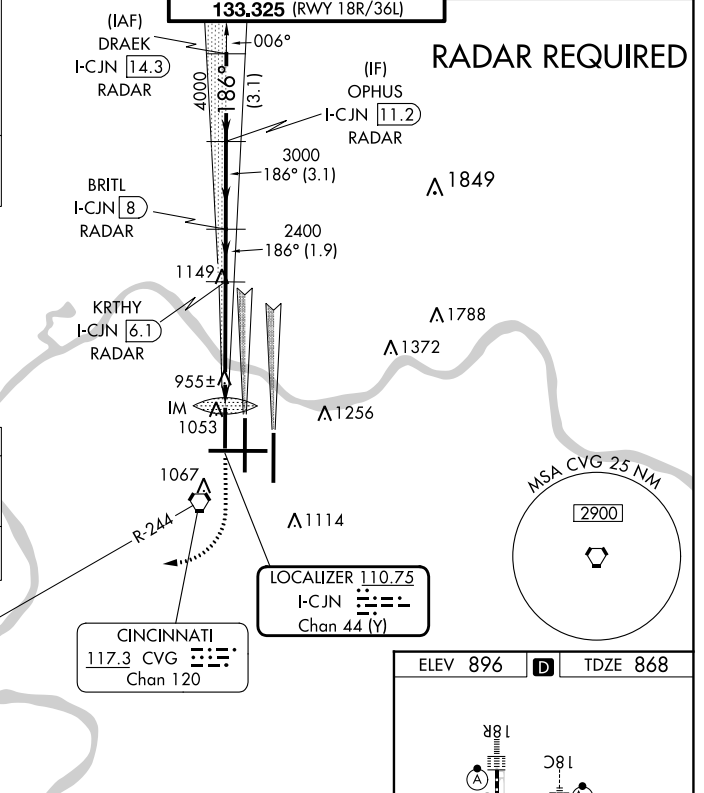
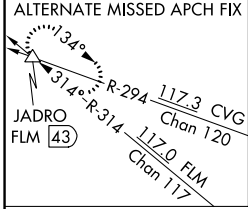
LOC/DME I-CJN	APP CRS	Rwy Idg	8000
<b>110.75</b>	<b>186°</b>	TDZE	<b>868</b>
Chan <b>44</b> (Y)		Apt Elev	<b>896</b>

# ILS RWY 18R (CAT II)

CINCINNATI/NORTHERN KENTUCKY INTL (CVG)

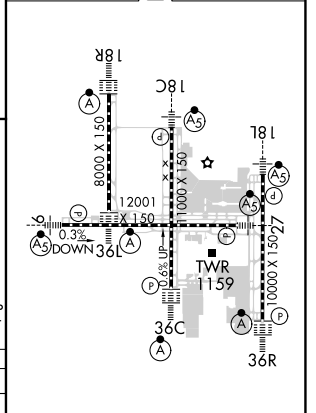
⚠ Simultaneous approach authorized with Rwy 18C and 18L. ALSIF-2 MISSED APPROACH: Climb to 1300 then climbing right turn to 3000 via CVG R-244 to AVIEW INT/ CVG 20 DME and hold.

D-ATIS	CINCINNATI APP CON	CINCINNATI TOWER	GND CON	CINC DEL	CPDLC
ARR <b>134.375</b> DEP <b>135.3</b>	<b>119.7 363.15</b> (090°-269°) <b>123.875 363.15</b> (270°-089°)	<b>118.975 360.85</b> (RWY 18L/36R) <b>118.3</b> (RWYS 18C/36C, 09/27) <b>133.325</b> (RWY 18R/36L)	<b>121.7</b>	<b>127.175</b>	



CATEGORY	A	B	C	D
S-ILS-18R		RA 113/12	100	DA 968

ELEV 896	D	TDZE 868
----------	---	----------



**CATEGORY II ILS - SPECIAL AIRCREW & AIRCRAFT CERTIFICATION REQUIRED**

HIRL all Rwys  
TDZ/CL all Rwys except 27

SE-1, 26 DEC 2024 to 23 JAN 2025

SE-1, 26 DEC 2024 to 23 JAN 2025