

LOC/DME I-VAC <b>110.75</b> Chan <b>44 (Y)</b>	APP CRS <b>006°</b>	Rwy Idg <b>8000</b> TDZE <b>873</b> Apt Elev <b>896</b>
--	------------------------	--

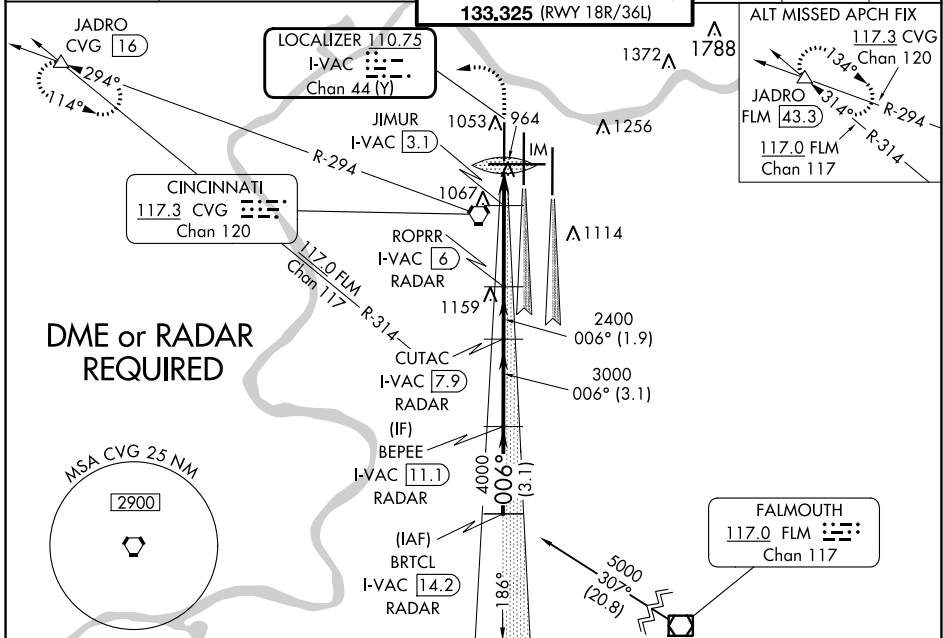
# ILS or LOC RWY 36L

CINCINNATI/NORTHERN KENTUCKY INTL (CVG)

Simultaneous approach authorized with Rwy 36C and 36R. DME required.

MISSED APPROACH: Climb to 3000 then climbing left turn to 3000 via heading 270° and CVG R-294 to JADRO/CVG 16 DME and hold.

D-ATIS ARR <b>134.375</b> DEP <b>135.3</b>	CINCINNATI APP CON <b>119.7 363.15</b> (090°-269°) <b>123.875 363.15</b> (270°-089°)	CINCINNATI TOWER <b>118.975 360.85</b> (RWY 18L/36R) <b>118.3</b> (RWYS 18C/36C, 09/27) <b>133.325</b> (RWY 18R/36L)	GND CON <b>121.7</b>	CLNC DEL <b>127.175</b>	CPDLC
---	--	---	-------------------------	----------------------------	-------

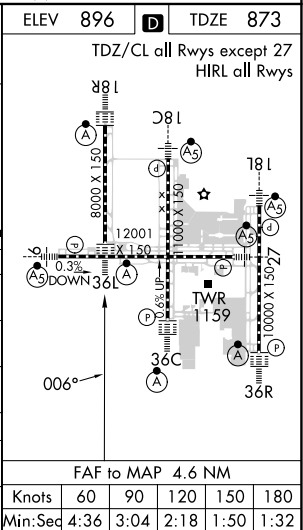


**DME or RADAR REQUIRED**



FALMOUTH  
**117.0 FLM**  
Chan 117

BRTCL I-VAC <b>14.2</b> RADAR BEPEE I-VAC <b>11.1</b> RADAR CUTAC I-VAC <b>7.9</b> RADAR ROPRR I-VAC <b>6</b> RADAR JIMUR I-VAC <b>3.1</b> RADAR	1300 3000 hdg 270°	CVG R-294	JADRO	ELEV 896	TDZE 873					
Procedure Turn NA 5000	GS 3.00° TCH 55	4000	3000	006°	2400	**1440	2400 I-VAC <b>3.1</b>	I-VAC <b>2.4</b>	IM I-VAC <b>1.5</b>	**LOC only.
CATEGORY	A	B	C	D						
S-ILS 36L	1073/18				200 (200-½)					
S-LOC 36L	1440/24		567 (600-½)		1440/60		567 (600-1¼)			
CIRCLING	1460-1		564 (600-1)		1560-1¾		664 (700-1¾)		1560-2 664 (700-2)	
JIMUR FIX MINIMUMS										
S-LOC 36L	1220/24		347 (400-½)		1220/30		347 (400-¾)			
CIRCLING	1460-1		564 (600-1)		1560-1¾		664 (700-1¾)		1560-2 664 (700-2)	



SE-1, 26 DEC 2024 to 23 JAN 2025

SE-1, 26 DEC 2024 to 23 JAN 2025