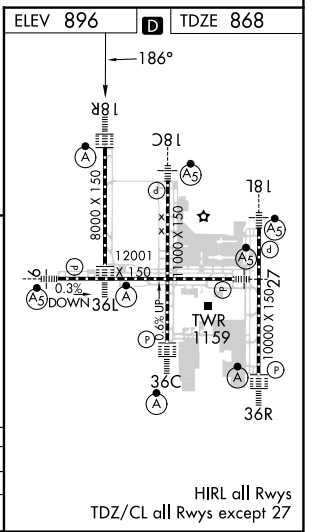
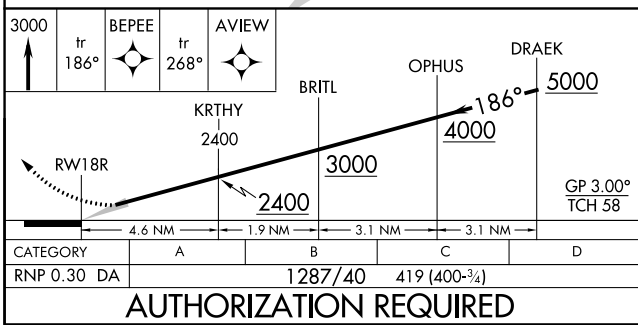
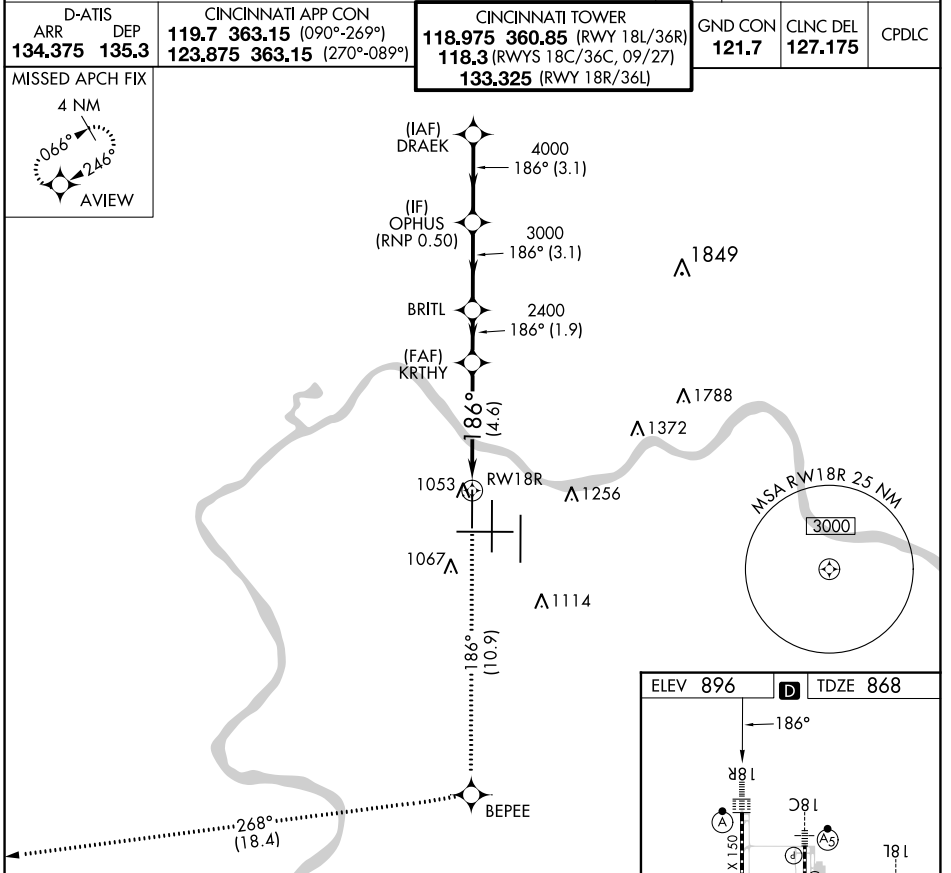


APP CRS	Rwy Idg	8000
186°	TDZE	868
	Apt Elev	896

RNAV (RNP) Z RWY 18R

CINCINNATI/NORTHERN KENTUCKY INTL (CVG)

RNP AR APCH - GPS.		ALSF-2 	MISSED APPROACH: Climb to 3000 on track 186° BEPEE and on track 268° to AVIEW and hold.	
Use of FD or AP required during simultaneous operations. Simultaneous approach authorized with Rwy 18C/L. For uncompensated Baro-VNAV systems, procedure NA below -17°C or above 54°C. For inop ALS, increase RNP 0.30 all Cats visibility to RVR 6000.			GND CON	CLNC DEL



SE-1, 26 DEC 2024 to 23 JAN 2025

SE-1, 26 DEC 2024 to 23 JAN 2025

AUTHORIZATION REQUIRED