

# RNAV (RNP) Z RWY 27

CINCINNATI/NORTHERN KENTUCKY INTL (CVG)

APP CRS	Rwy Idg	<b>12000</b>
<b>276°</b>	TDZE	<b>875</b>
	Apt Elev	<b>896</b>

RNP AR APCH - GPS

**▽** For uncompensated Baro-VNAV systems, procedure NA below -16° C or above 54° C. For inop ALS, increase RNP 0.23 all Cats visibility to 1½ SM and increase RNP 0.30 all Cats visibility to 1¾ SM.  
**△ NA**

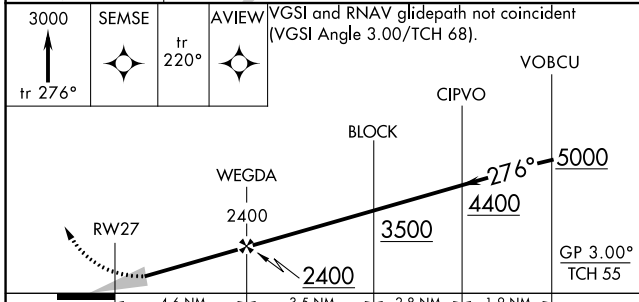
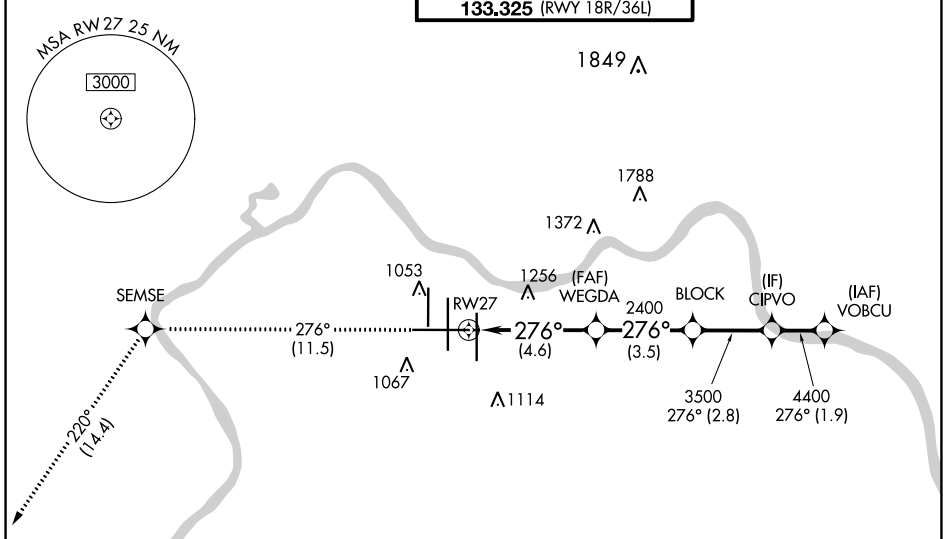


**MISSED APPROACH:** Climb to 3000 on track 276° SEMSE and on track 220° to AVIEW and hold.

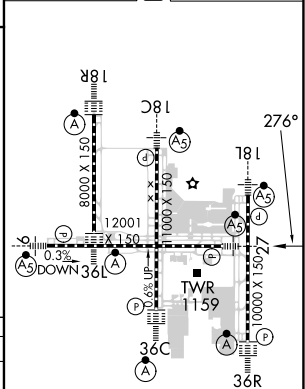
D-ATIS	CINCINNATI APP CON
ARR <b>134.375</b> DEP <b>135.3</b>	<b>119.7 363.15</b> (090°-269°) <b>123.875 363.15</b> (270°-089°)

CINCINNATI TOWER
<b>118.975 360.85</b> (RWY 18L/36R) <b>118.3</b> (RWYS 18C/36C, 09/27) <b>133.325</b> (RWY 18R/36L)

GND CON	CLNC DEL	CPDLC
<b>121.7</b>	<b>127.175</b>	



ELEV 896	<b>D</b>	TDZE 875
----------	----------	----------



CATEGORY	A	B	C	D
RNP 0.15 DA		1296/40	421 (500-¾)	
RNP 0.23 DA		1378/55	503 (500-1)	
RNP 0.30 DA		1445-1¼	570 (600-1¼)	

## AUTHORIZATION REQUIRED

HIRL all Rwys  
TDZ/CL all Rwys except 27

SE-1, 26 DEC 2024 to 23 JAN 2025

SE-1, 26 DEC 2024 to 23 JAN 2025