

WAAS CH 86803 W18B	APP CRS 186°	Rwy Idg 11000 TDZE 875 Apt Elev 896
--	------------------------	--

RNAV (GPS) Y RWY 18C

CINCINNATI/NORTHERN KENTUCKY INTL (CVG)

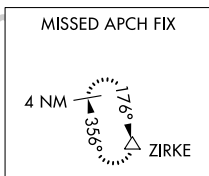
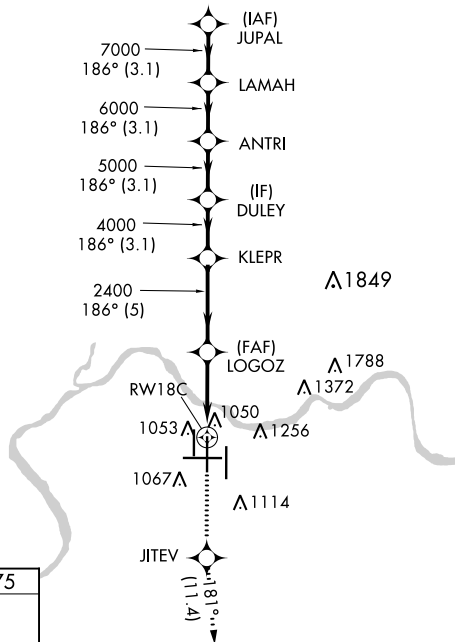
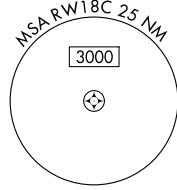
RADAR required for procedure entry. RNP APCH - GPS.

▼ For uncompensated Baro-VNAV systems, LNAV/VNAV NA below -17°C or above 54°C. Simultaneous approach authorized with Rwy 18 L/R. LNAV procedure NA during simultaneous operations. Use of FD or AP required during simultaneous operations. For inop ALS, increase LNAV Cat C/D visibility to 1 3/8 SM.

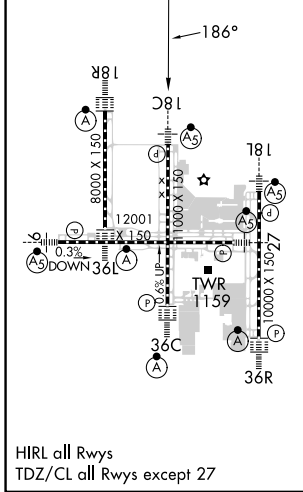


MISSED APPROACH:
Climb to 3000 direct
JITEV and on 181° track
to ZIRKE and hold.

D-ATIS ARR 134.375 DEP 135.3	CINCINNATI APP CON 119.7 363.15 (090°-269°) 123.875 363.15 (270°-089°)	CINCINNATI TOWER 118.975 360.85 (RWY 18L/36R) 118.3 (RWYS 18C/36C, 09/27) 133.325 (RWY 18R/36L)	GND CON 121.7	CLNC DEL 127.175	CPDLC
---	--	---	-------------------------	----------------------------	-------



ELEV 896	D	TDZE 875
----------	----------	----------



3000	JITEV	ZIRKE	VGSI and RNAV glidepath not coincident (VGSI Angle 3.00/TCH 71).						
↑	181°	△	LAMA	JUPAL					
			DULEY	ANTRI	LAMA	JUPAL			
			2400	5000	7000	8000			
			1.4 NM to RW18C	4000	6000	7000			
			1.4	3.2 NM	5 NM	3.1 NM	3.1 NM	3.1 NM	3.1 NM
CATEGORY	A		B		C		D		
LPV DA			1075/18		200 (200-1/2)				
LNAV/VNAV DA			1398/55		523 (600-1)				
LNAV MDA	1360/24		485 (500-1/2)		1360/50		485 (500-1)		
C CIRCLING	1460-1		564 (600-1)		1560-1 3/4 664 (700-1 3/4)		1560-2 664 (700-2)		

SE-1, 26 DEC 2024 to 23 JAN 2025

SE-1, 26 DEC 2024 to 23 JAN 2025