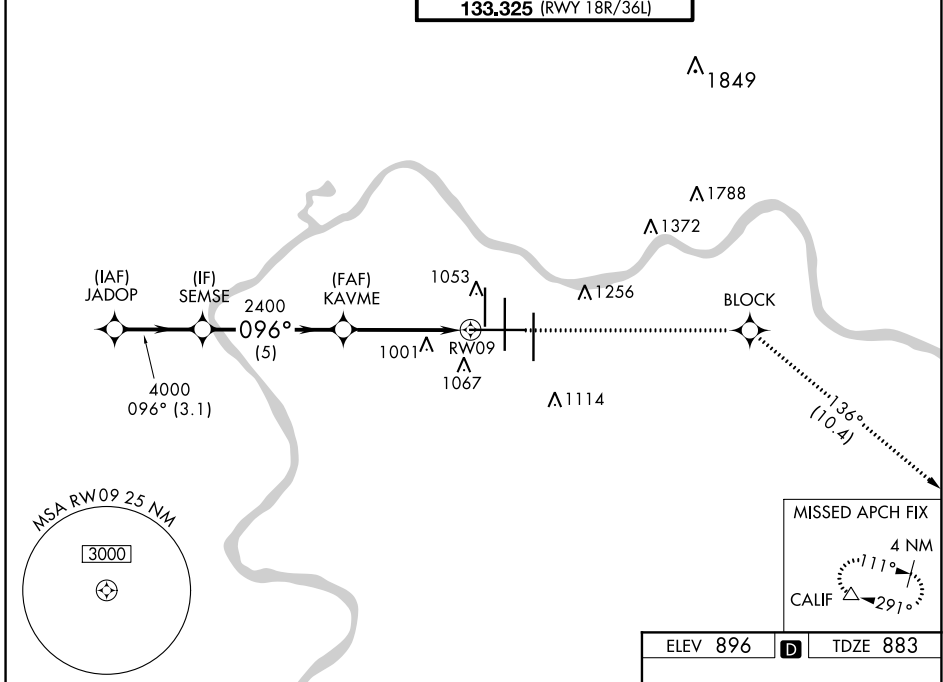


WAAS CH 65709 W09A	APP CRS 096°	Rwy Idg 11640 TDZE 883 Apt Elev 896
--	------------------------	--

RNAV (GPS) Y RWY 9

CINCINNATI/NORTHERN KENTUCKY INTL (CVG)

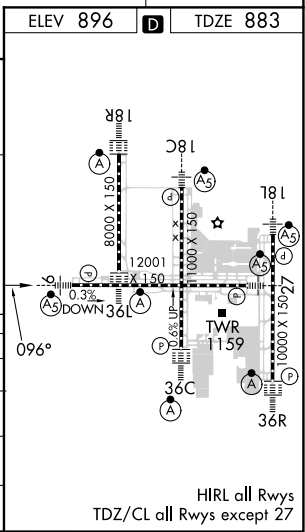
RNP APCH - GPS.		MALSR	MISSED APPROACH: Climb to 3000 direct BLOCK and on track 136° to CALIF and hold.		
▼ For uncompensated Baro-VNAV systems, LNAV/VNAV NA below -16° C or above 54° C. For inop ALS, increase LNAV/VNAV all Cats visibility to RVR 6000 and LNAV Cat C/D visibility to RVR 5500.					
D-ATIS ARR 134.375 DEP 135.3	CINCINNATI APP CON 119.7 363.15 (090°-269°) 123.875 363.15 (270°-089°)	CINCINNATI TOWER 118.975 360.85 (RWY 18L/36R) 118.3 (RWYS 18C/36C, 09/27) 133.325 (RWY 18R/36L)	GND CON 121.7	CLNC DEL 127.175	CPDLC



SE-1, 26 DEC 2024 to 23 JAN 2025

SE-1, 26 DEC 2024 to 23 JAN 2025

VGSI and RNAV glidepath not coincident (VGSI Angle 3.00/TCH 70).		3000	BLOCK	fr 136°	CALIF
JADOP	SEMSE	KAVME	1 NM to RWY 9		
5000	4000	2400	RWY 9		
GP 3.00° TCH 52	3.1 NM	5 NM	3.6 NM	1 NM	
CATEGORY	A	B	C	D	
LPV DA	1083/18		200 (200-½)		
LNAV/VNAV DA	1297/40		414 (500-¾)		
LNAV MDA	1260/24	377 (400-½)	1260/35	377 (400-⅝)	
CIRCLING	1460-1	564 (600-1)	1560-1¾ 664 (700-¾)	1560-2 664 (700-2)	



HIRL all Rwys
TDZ/CL all Rwys except 27