

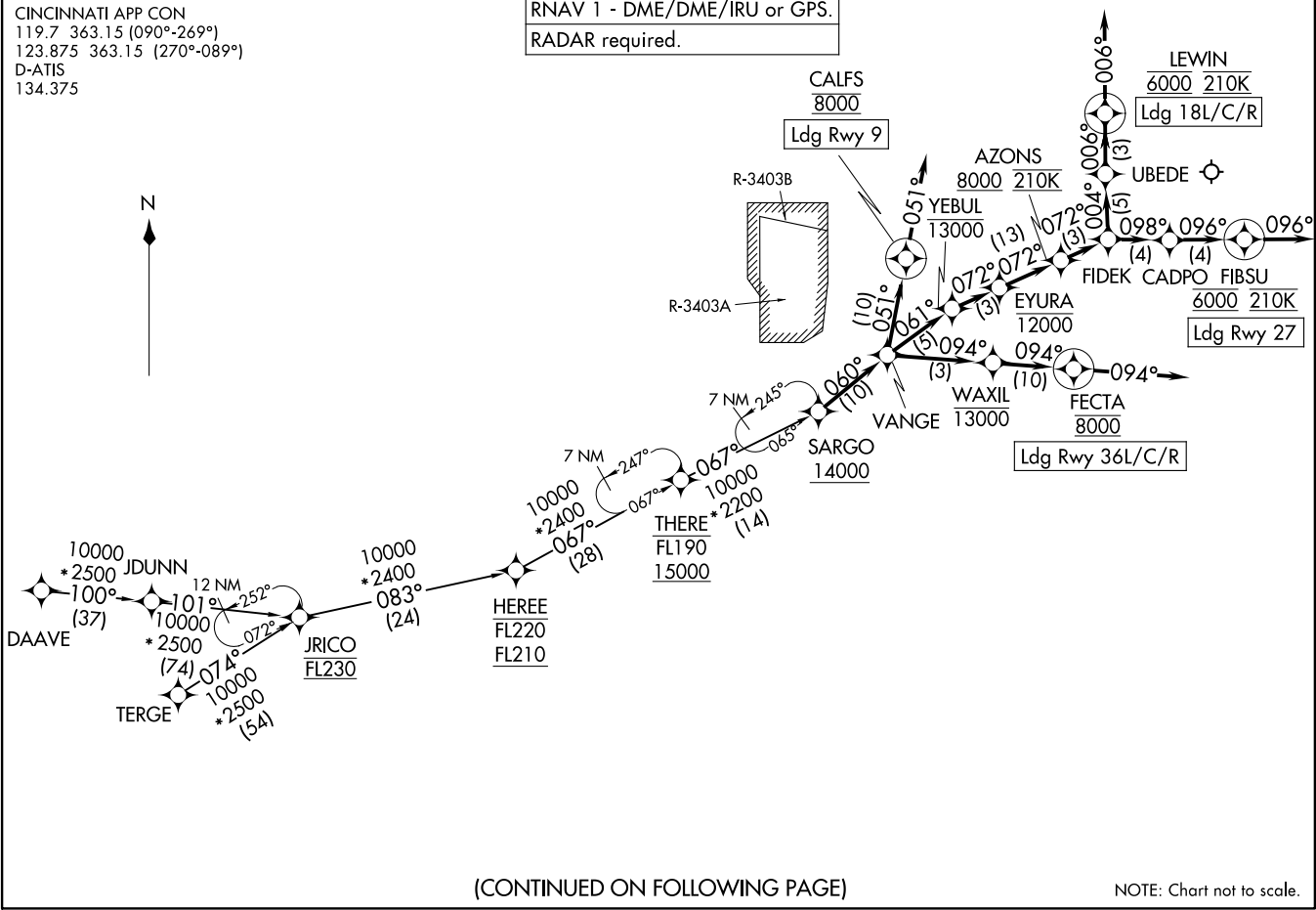
SARGO FOUR ARRIVAL (RNAV)
(SARGO.SARGO4) 21MAR24

CINCINNATI APP CON
119.7 363.15 (090°-269°)
123.875 363.15 (270°-089°)
D-ATIS
134.375

RNAV 1 - DME/DME/IRU or GPS.
RADAR required.

(SARGO.SARGO4) 24081
SARGO FOUR ARRIVAL (RNAV)

AL-655 (FAA)
CINCINNATI/NORTHERN KENTUCKY INTL (CVT)
CINCINNATI/NORTHERN KENTUCKY INTL (CVT)
COMINGTON, KENTUCKY



(CONTINUED ON FOLLOWING PAGE)

NOTE: Chart not to scale.

CINCINNATI/NORTHERN KENTUCKY INTL (CVT)
COMINGTON, KENTUCKY

SARGO FOUR ARRIVAL (RNAV)

ARRIVAL ROUTE DESCRIPTION

DAAVE TRANSITION (DAAVE.SARGO4):

TERGE TRANSITION (TERGE.SARGO4):

From SARGO on track 060° to VANGE.

LANDING RUNWAY 9: From VANGE on track 051° to cross CALFS at 8000, then on track 051°. Expect RADAR vectors to final approach course.

LANDING RUNWAY 18L/C/R: From VANGE on track 061° to cross YEBUL at or below 13000, then on track 072° to cross EYURA at or below 12000, then on track 072° to cross AZONS at or above 8000 and at 210K, then on track 072° to FIDEK, then on track 004° to UBEDE, then on track 006° to cross LEWIN at 6000 and at 210K, then on track 006°. Expect RADAR vectors to final approach course.

LANDING RUNWAY 27: From VANGE on track 061° to cross YEBUL at or below 13000, then on track 072° to cross EYURA at or below 12000, then on track 072° to cross AZONS at or above 8000 and at 210K, then on track 072° to FIDEK, then on track 098° to CADPO, then on track 096° to cross FIBSU at 6000 and at 210K, then on track 096°. Expect RADAR vectors to final approach course.

LANDING RUNWAY 36L/C/R: From VANGE on track 094° to cross WAXIL at or below 13000, then on track 094° to cross FEFTA at 8000, then on track 094°. Expect RADAR vectors to final approach course.

SE-1, 26 DEC 2024 to 23 JAN 2025

SE-1, 26 DEC 2024 to 23 JAN 2025