

(SILKS6.SILKS) 24137

CINCINNATI/NORTHERN KENTUCKY INTL (CVG)

SILKS SIX DEPARTURE (RNAV)

AL-655 (FAA)

COVINGTON, KENTUCKY

RNAV 1 - DME/DME/IRU or GPS.

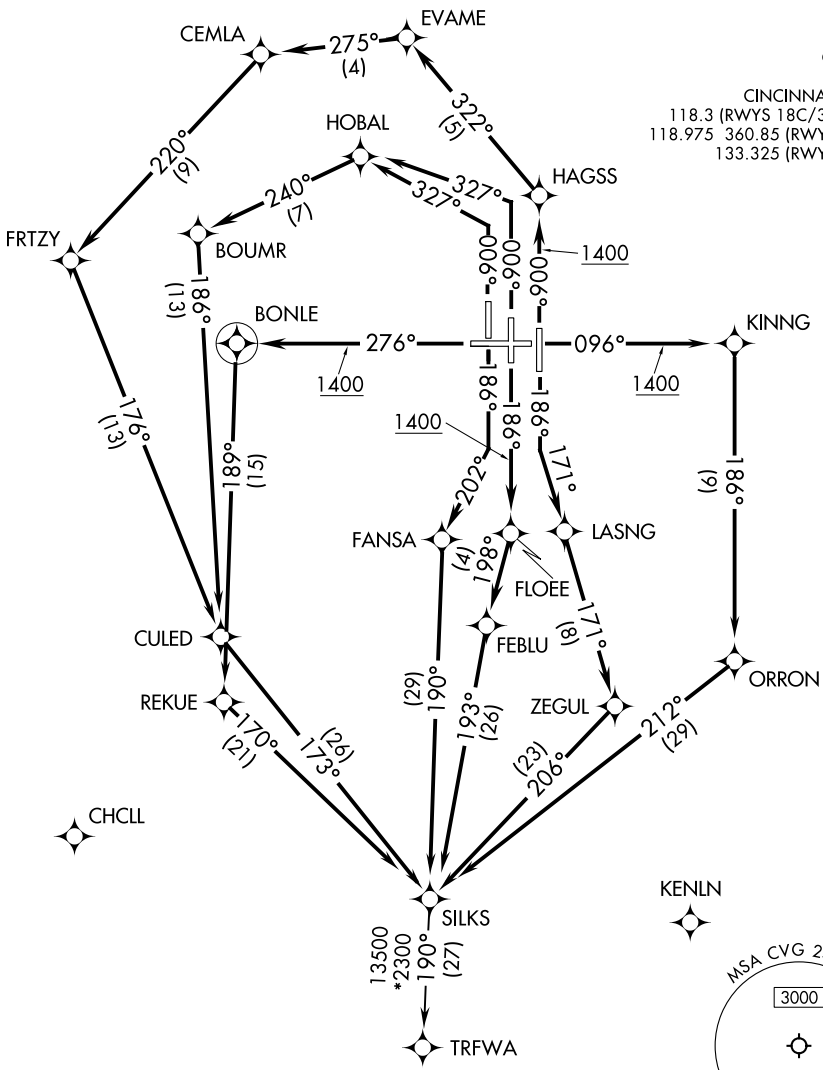
TOP ALTITUDE:
(JETS) 5000
(PROPS) 4000

RADAR required for non-GPS equipped aircraft.

CINCINNATI DEP CON
 126.65 254.25 (001°-180°)
 128.7 254.25 (181°-360°)
 D-ATIS 135.3
 CLNC DEL
 127.175
 CPDLC
 GND CON
 121.7
 CINCINNATI TOWER
 118.3 (RWYS 18C/36C, 9/27)
 118.975 360.85 (RWY 18L/36R)
 133.325 (RWY 18R/36L)

SE-1, 26 DEC 2024 to 23 JAN 2025

SE-1, 26 DEC 2024 to 23 JAN 2025



TAKEOFF MINIMUMS:
 Rwy 9, 18L/C/R, 27, 36L/C/R: Standard.

NOTE: Increase speed to 250K until reaching/leaving 10000', if unable, advise ATC.
 NOTE: Transponder code will be issued via PDC or Cincinnati CLNC DEL.

(CONTINUED ON FOLLOWING PAGE)

NOTE: Chart not to scale.

SILKS SIX DEPARTURE (RNAV)

(SILKS6.SILKS) 16MAY24

COVINGTON, KENTUCKY

CINCINNATI/NORTHERN KENTUCKY INTL (CVG)



DEPARTURE ROUTE DESCRIPTION

TAKEOFF RUNWAY 9: Climb on heading 096° to 1400, then direct KINNG, then on track 186° to ORRON, then on track 212° to SILKS, thence. . . .

TAKEOFF RUNWAY 18C: Climb on heading 186° to 1400, then direct FLOEE, then on track 198° to FEBLU, then on track 193° to SILKS, thence. . . .

TAKEOFF RUNWAY 18L: Climb on heading 186° to intercept course 171° to LASNG, then on track 171° to ZEGUL, then on track 206° to SILKS, thence. . . .

TAKEOFF RUNWAY 18R: Climb on heading 186° to intercept course 202° to FANSA, then on track 190° to SILKS, thence. . . .

TAKEOFF RUNWAY 27: Climb on heading 276° to 1400, then direct BONLE, then on track 189° to REKUE, then on track 170° to SILKS, thence. . . .

TAKEOFF RUNWAY 36C: Climb on heading 006° to intercept course 327° to HOBAL, then on track 240° to BOUMR, then on track 186° to CULED, then on track 173° to SILKS, thence. . . .

TAKEOFF RUNWAY 36L: Climb on heading 006° to intercept course 327° to HOBAL, then left turn on track 240° to BOUMR, then on track 186° to CULED, then on track 173° to SILKS, thence. . . .

TAKEOFF RUNWAY 36R: Climb on heading 006° to 1400, then direct HAGSS, then on track 322° to EVAME, then on track 275° to CEMLA, then on track 220° to FRTZY, then on track 176° to CULED, then on track 173° to SILKS, thence. . . .

. . . . Turbojets: maintain 5000. All other aircraft: maintain 4000.
Expect clearance to filed altitude within ten minutes after departure.

TRFWA TRANSITION (SILKS6.TRFWA)

SE-1, 26 DEC 2024 to 23 JAN 2025

SE-1, 26 DEC 2024 to 23 JAN 2025