

VORTAC MQP <b>117.7</b> Chan <b>124</b>	APP CRS <b>309°</b>	Rwy Idg <b>5596</b> TDZE <b>974</b> Apt Elev <b>974</b>
-----------------------------------------------	------------------------	---------------------------------------------------------------

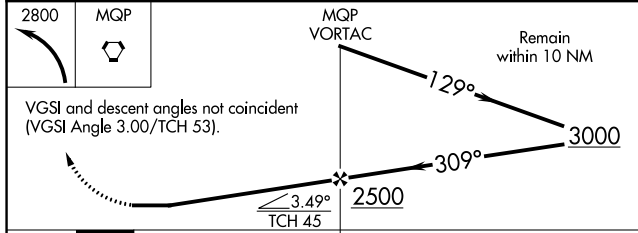
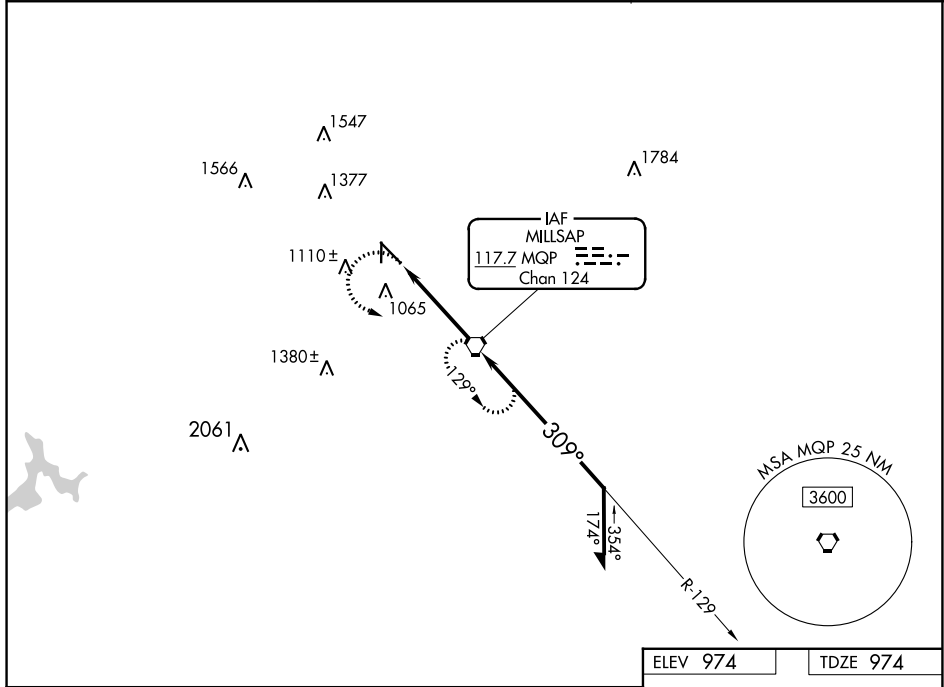
# VOR RWY 31

MINERAL WELLS RGNL (MWL)

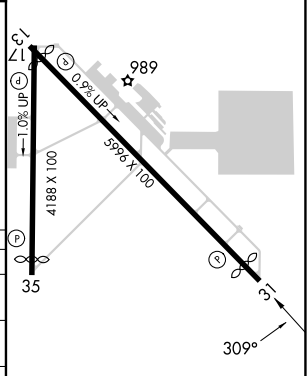
**NA** Circling to Rwy 17 NA at night. When local altimeter setting not received, use Fort Worth Meacham altimeter setting.

**MISSED APPROACH:** Climbing left turn to 2800 direct MQP VORTAC and hold.

ASOS <b>135.075</b>	FORT WORTH CENTER <b>127.0 360.6</b>	UNICOM <b>122.725 (CTAF)</b>
------------------------	-----------------------------------------	---------------------------------



ELEV 974	TDZE 974
----------	----------



CATEGORY	A	B	C	D
S-31	1340-1 366 (400-1)			1340-1¼ 366 (400-1¼)
<b>C</b> CIRCLING	1420-1 446 (500-1)	1460-1 486 (500-1)	1740-2¼ 766 (800-2¼)	1740-2½ 766 (800-2½)
FORT WORTH MEACHAM INTL ALTIMETER SETTING MINIMUMS				
S-31	1460-1 486 (500-1)		1460-1¼ 486 (500-1¼)	1460-1½ 486 (500-1½)
<b>C</b> CIRCLING	1540-1 566 (600-1)	1560-1 586 (600-1)	1820-2½ 846 (900-2½)	1820-2¾ 846 (900-2¾)

MIRL Rwy 13-31 and 17-35	FAF to MAP 4 NM				
Knots	60	90	120	150	180
Min:Sec	4:00	2:40	2:00	1:36	1:20

SC-2, 26 DEC 2024 to 23 JAN 2025

SC-2, 26 DEC 2024 to 23 JAN 2025