

DEEPO ONE ARRIVAL (RNAV)

NE-1, 26 DEC 2024 to 23 JAN 2025

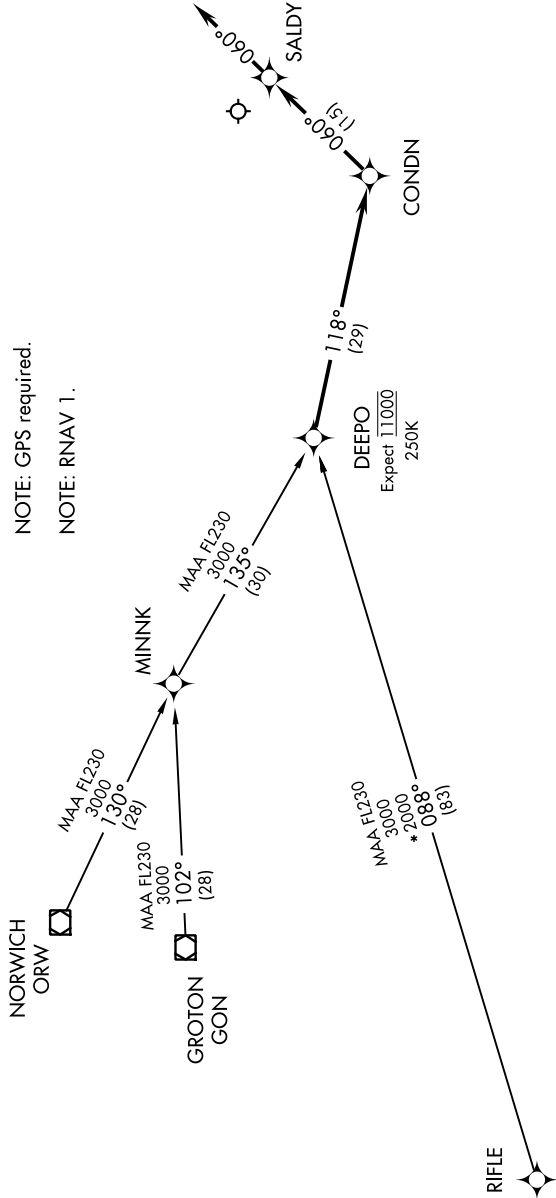
- GROTON TRANSITION (GON.DEEPO1)
- NORWICH TRANSITION (ORW.DEEPO1)
- RIFLE TRANSITION (RIFLE.DEEPO1)

BOSTON APP CON
133.75 318.1
ATIS
127.5
NANTUCKET TOWER ★
118.3 (CTAF)

... From DEEPO, via 118° track to CONDN; thence via 060° track to SALDY. Depart SALDY heading 060°, expect radar vectors to final approach course.



- NOTE: RADAR required.
- NOTE: GPS required.
- NOTE: RNAV 1.



NOTE: Chart not to scale.

NE-1, 26 DEC 2024 to 23 JAN 2025

DEEPO ONE ARRIVAL (RNAV)

(DEEPO.DEEPO1) 10JUN04