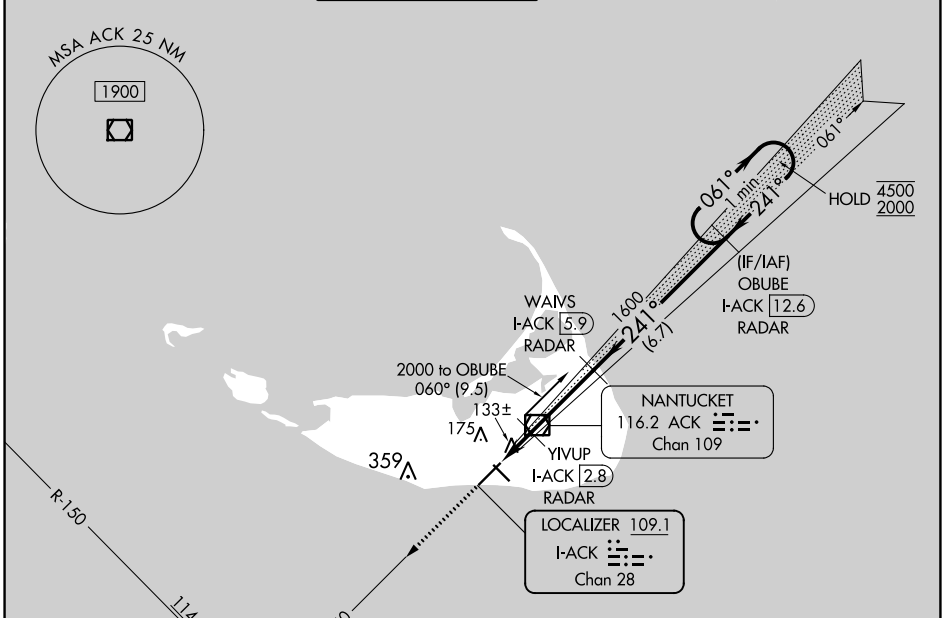


LOC/DME I-ACK <b>109.1</b> Chan <b>28</b>	APP CRS <b>241°</b>	Rwy Idg TDZE Apt Elev <b>6303</b> <b>47</b> <b>47</b>
---	------------------------	--

# ILS or LOC RWY 24

NANTUCKET MEML (ACK)

DME or RADAR required.		SSALR 	MISSED APPROACH: Climb to 2300 on ACK VOR/DME R-240 direct UFTAC INT and hold.		
For inop ALS, increase S-LOC 24 Cat C and D visibilities to RVR 5500.					
ATIS <b>127.5</b>	BOSTON APP CON <b>126.1 318.1</b>	<b>NANTUCKET TOWER ★</b> <b>118.3 (CTAF) 0</b>	GND CON <b>132.5</b>	CLNC DEL <b>119.375</b>	UNICOM <b>122.95</b>



NE-1, 26 DEC 2024 to 23 JAN 2025

NE-1, 26 DEC 2024 to 23 JAN 2025

