

LOC/DME I-RNE 109.1 Chan 28	APP CRS 061°	Rwy Idg 5765 TDZE 38 Apt Elev 47
---	------------------------	---

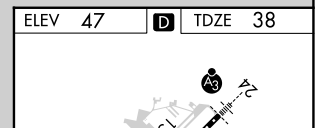
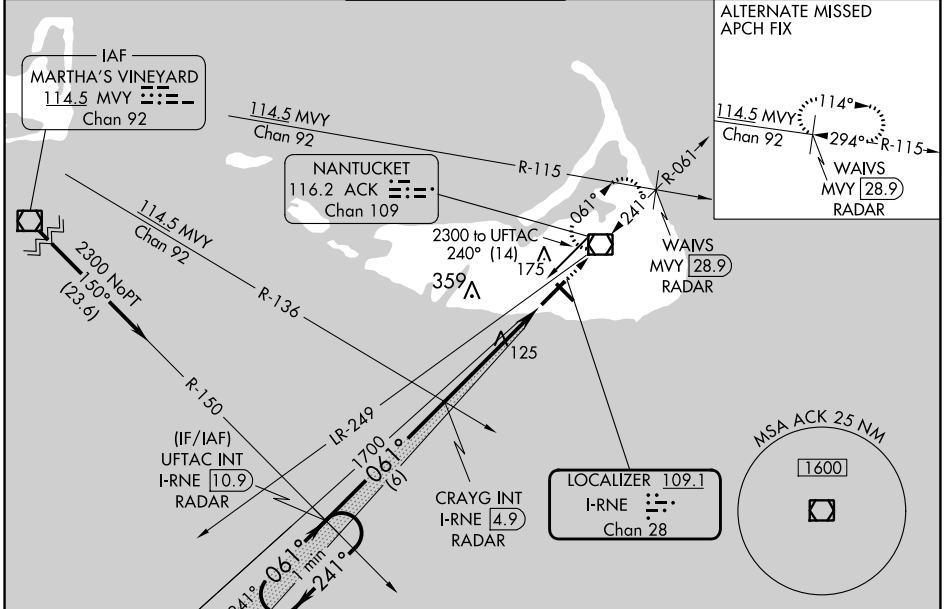
ILS or LOC RWY 6

NANTUCKET MEML (ACK)

When local altimeter not received, use Hyannis altimeter setting and increase S-ILS 6 DA to 301 and all MDA 80 feet; increase S-LOC 6 Cats C/D visibility to RVR 5000 and Circling Cats C/D visibility 1/4 SM. Inop table does not apply to S-ILS 6. For inop ALS, increase S-LOC 6 Cat D visibility to RVR 5500. For inop ALS when using Hyannis altimeter setting, increase S-ILS 6 all Cats visibility to RVR 4500 and S-LOC 6 Cat D visibility to 1/4 SM. VDP NA when using Hyannis altimeter setting.

MALSF
MISSED APPROACH:
Climb to 1800 direct
ACK VOR/DME and
hold, continue climb-
in-hold to 1800.

ATIS 127.5	BOSTON APP CON 126.1 318.1	NANTUCKET TOWER * 118.3 (CTAF) 0	GND CON 132.5	CLNC DEL 119.375	UNICOM 122.95
----------------------	--------------------------------------	--	-------------------------	----------------------------	-------------------------



One Minute Holding Pattern	UFTAC INT I-RNE [10.9] RADAR	CRAYG INT I-RNE [4.9] RADAR	*LOC only.	1800	ACK
GS 3.00° TCH 57	1700	1700	I-RNE DME ANTENNA	0.7	0.2
CATEGORY	A	B	C	D	
S-ILS 6		238/40	200 (200-3/4)		
S-LOC 6		380/40	342 (400-3/4)		
CIRCLING	480-1 433 (500-1)	500-1 453 (500-1)	720-2 673 (700-2)	720-2 1/4 673 (700-2 1/4)	
ELEV 47 D TDZE 38					
TWR 107					
TDZ/CL Rwy 24					
REIL Rwys 15 and 33					
MIRL Rwy 15-33 0					
HIRL Rwy 6-24 0					
FAF to MAP 5.1 NM					
Knots	60	90	120	150	180
Min:Sec	5:06	3:24	2:33	2:02	1:42

NE-1, 26 DEC 2024 to 23 JAN 2025

NE-1, 26 DEC 2024 to 23 JAN 2025