

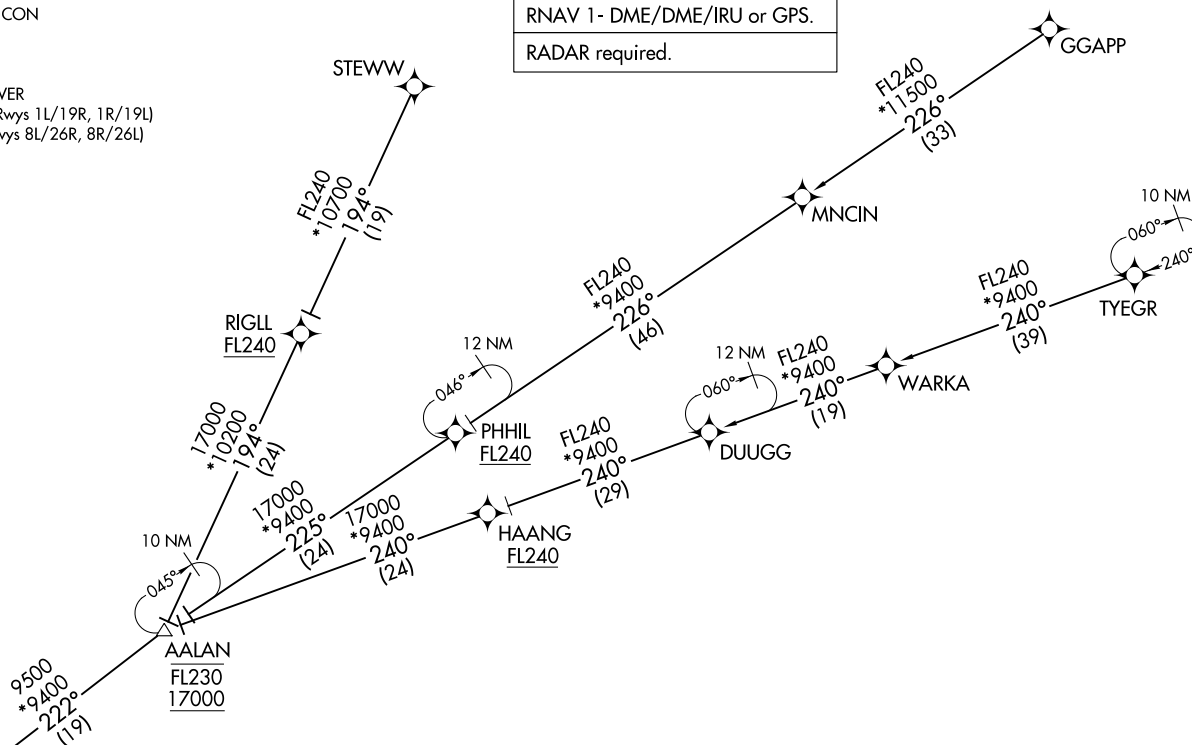
CHOWW THREE ARRIVAL (RNAV) (CHOWW.CHOWW3) 31OCT24

CHOWW THREE ARRIVAL (RNAV) Transition Routes

LAS VEGAS, NEVADA HARRY REID INTL (LAS)

LAS VEGAS APP CON  
119.775 282.2  
D-ATIS  
132.4  
LAS VEGAS TOWER  
118.75 257.8 (Rwys 1L/19R, 1R/19L)  
119.9 257.8 (Rwys 8L/26R, 8R/26L)

RNAV 1 - DME/DME/IRU or GPS.  
RADAR required.



CHOWW.CHOWW3) 24305

AL-662 (FAA) Transition Routes

HARRY REID INTL (LAS) LAS VEGAS, NEVADA

NOTE: Jet aircraft only.

GGAPP TRANSITION (GGAPP.CHOWW3)  
STEWV TRANSITION (STEWV.CHOWW3)  
TYEGR TRANSITION (TYEGR.CHOWW3)

(CONTINUED ON FOLLOWING PAGE)

See following page for Arrival Routes

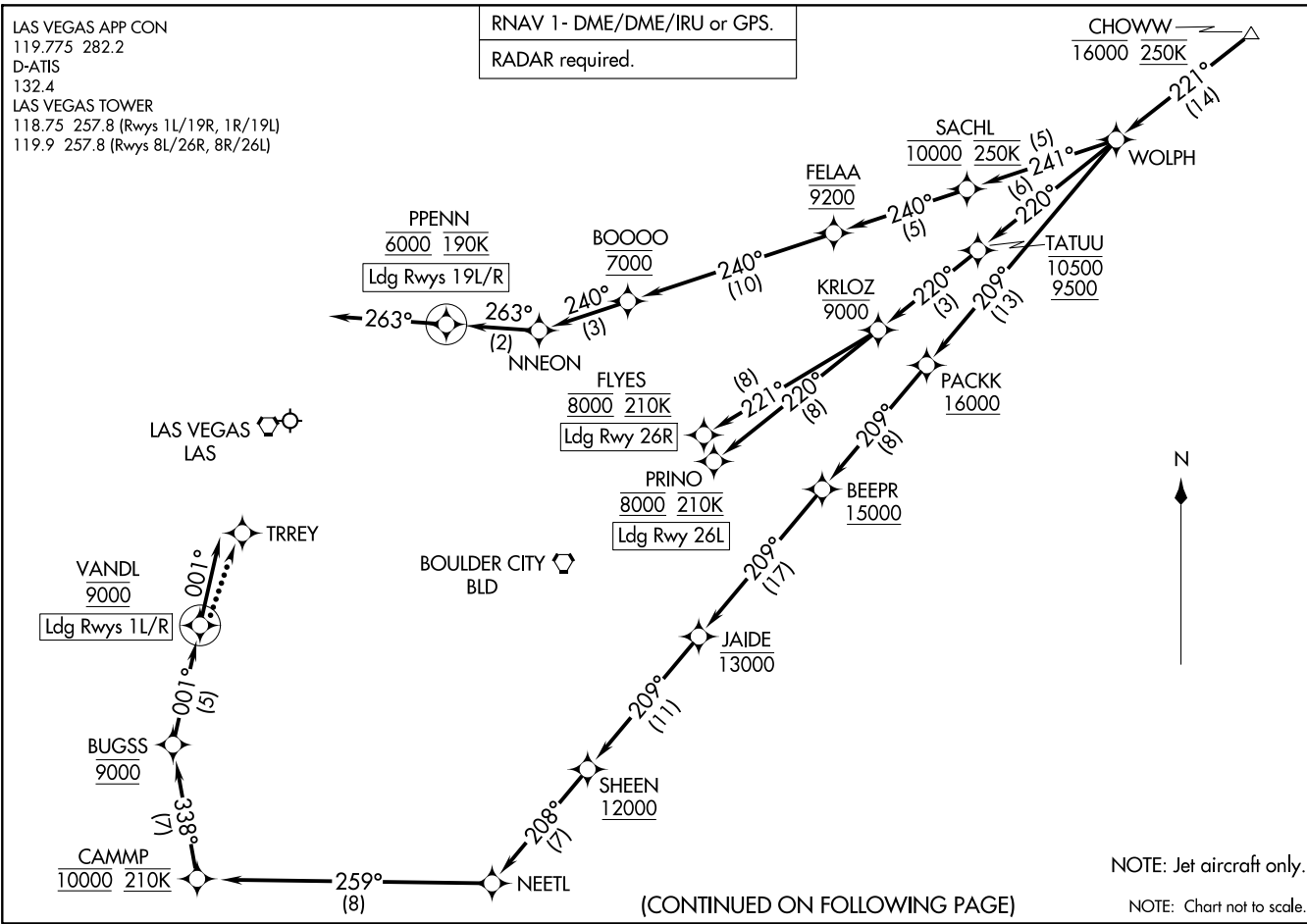
NOTE: Chart not to scale.

RNAV 1 - DME/DME/IRU or GPS.  
RADAR required.

LAS VEGAS APP CON  
119.775 282.2  
D-ATIS  
132.4  
LAS VEGAS TOWER  
118.75 257.8 (Rwys 1L/19R, 1R/19L)  
119.9 257.8 (Rwys 8L/26R, 8R/26L)

CHOWW THREE ARRIVAL (RNAV) Arrival Routes  
(CHOWW.CHOWW3) 31OCT24  
LAS VEGAS, NEVADA  
HARRY REID INTL (LAS)

(CHOWW.CHOWW3) 24305  
A-L662 (FAA)  
CHOWW THREE ARRIVAL (RNAV) Arrival Routes  
HARRY REID INTL (LAS)  
LAS VEGAS, NEVADA



ARRIVAL ROUTE DESCRIPTION

From CHOWW on track 221° to WOLPH.

LANDING RUNWAYS 1L/R: From WOLPH on track 209° to cross PACKK at or above 16000, then on track 209° to cross BEEPR at or above 15000, then on track 209° to cross JAIDE at or below 13000, then on track 209° to cross SHEEN at or above 12000, then on track 208° to NEETL, then on track 259° to cross CAMMP at 10000 and at 210K, then on track 338° to cross BUGSS at 9000, then on track 001° to cross VANDL at 9000, then on track 001°. Expect RADAR vectors to final approach course.

LANDING RUNWAYS 19L/R: From WOLPH on track 241° to cross SACHL at 10000 and at 250K, then on track 240° to cross FELAA at 9200, then on track 240° to cross BOOOO at 7000, then on track 240° to NNEON, then on track 263° to cross PPENN at 6000 and at 190K, then on track 263°. Expect RADAR vectors to final approach course.

LANDING RUNWAY 26L: From WOLPH on track 220° to cross TATUU between 9500 and 10500, then on track 220° to cross KRLOZ at or below 9000, then on track 220° to cross PRINO at 8000 and at 210K. Expect ILS or LOC RWY 26L approach.

LANDING RUNWAY 26R: From WOLPH on track 220° to cross TATUU between 9500 and 10500, then on track 220° to cross KRLOZ at or below 9000, then on track 221° to cross FLYES at 8000 and at 210K. Expect ILS or LOC RWY 26R approach.

LOST COMMUNICATIONS

LANDING RUNWAY 1L: At VANDL, proceed to TRREY, then on the ILS or LOC RWY 1L approach.

LANDING RUNWAY 1R: At VANDL proceed on the RNAV (GPS) RWY 1R approach.

LANDING RUNWAY 19L: At PPENN proceed on the RNAV (RNP) RWY 19L approach, if unable, proceed visually via last track to intercept the final approach course; if unable, maintain 7000 proceed direct LAS VORTAC then direct BLD VORTAC and then on the ILS or LOC RWY 26L approach.

LANDING RUNWAY 26L: At PRINO proceed on the ILS or LOC RWY 26L approach.

LANDING RUNWAY 26R: At FLYES proceed on the ILS or LOC RWY 26R approach.

SW-4, 26 DEC 2024 to 23 JAN 2025

SW-4, 26 DEC 2024 to 23 JAN 2025