

(GIDGT2.GIDGT) 27JAN22

GIDGT TWO DEPARTURE (RNAV) Departure Routes

LAS VEGAS, NEVADA  
HARRY REID INTL (LAS)

D-ATIS  
132.4  
CLNC DEL  
118.0  
CPDLC  
GND CON  
121.1 270.8 E of 1R/19L  
121.9 254.3 W of 1L/19R  
LAS VEGAS TOWER  
118.75 257.8 (Rwys 1L/19R, 1R/19L)  
119.9 257.8 (Rwys 8L/26R, 8R/26L)  
LAS VEGAS DEP CON  
133.95 353.7

**TOP ALTITUDE:  
FL190**



DEPARTURE ROUTE DESCRIPTION

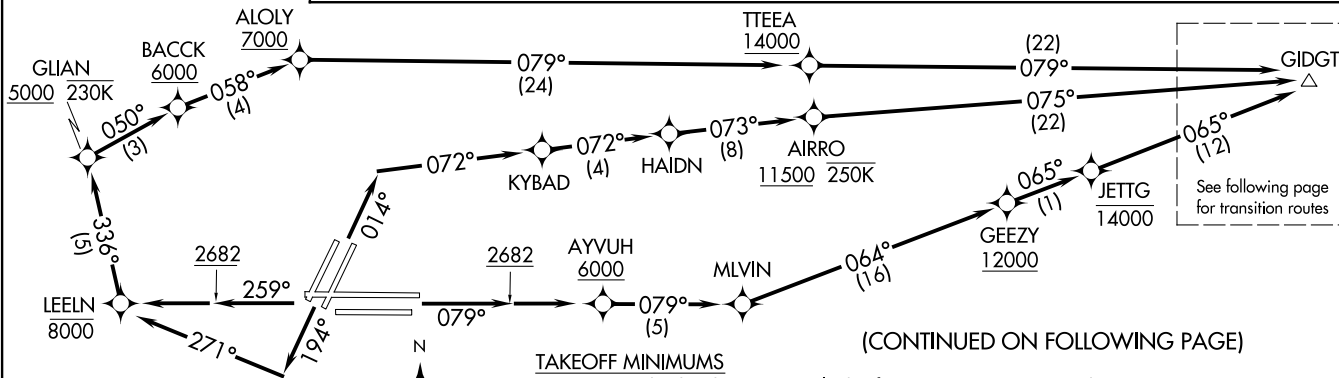
TAKEOFF RUNWAYS 1L/R: Climb on heading 014° to intercept course 072° to KYBAD, then on track 072° to HAIDN, then on track 073° to cross AIRRO at or above 11500 and at or below 250K, then on track 075° to GIDGT, thence. . .

TAKEOFF RUNWAYS 8L/R: Climb on heading 079° to 2682, then direct AYYUH, cross AYYUH at or above 6000, then on track 079° to MLVIN, then on track 064° to cross GEEZY at or above 12000, then on track 065° to cross JETTG at or below 14000, then on track 065° to GIDGT, thence. . .

TAKEOFF RUNWAYS 19L/R: Climb on heading 194° to intercept course 271° to cross LEELN at or below 8000, then on track 336° to cross GLIAN at or above 5000 and at or below 230K, then on track 050° to cross BACCK at or above 6000, then on track 058° to cross ALOLY at or above 7000, then on track 079° to cross TTEEA at or above 14000, then on track 079° to GIDGT, thence. . .

TAKEOFF RUNWAYS 26L/R: Climb on heading 259° to 2682, then direct LEELN to cross LEELN at or below 8000, then on track 336° to cross GLIAN at or above 5000 and at or below 230K, then on track 050° to cross BACCK at or above 6000, then on track 058° to cross ALOLY at or above 7000, then on track 079° to cross TTEEA at or above 14000, then on track 079° to GIDGT, thence. . .

. . . on (transition). Maintain FL190. Expect filed altitude 10 minutes after departure.



NOTE: DME/DME/IRU or GPS required.  
NOTE: RNAV 1.  
NOTE: RADAR required.  
NOTE: Turbojet only.  
NOTE: Chart not to scale.

TAKEOFF MINIMUMS

Rwy 1L: Standard with minimum climb of 500' per NM to 2682, then 286' per NM to 4900.  
Rwy 1R: Standard with minimum climb of 500' per NM to 2682, then 295' per NM to 4900.  
Rwys 8L/R, 19L/R: Standard with minimum climb of 500' per NM to 2682.  
Rwy 26L: Standard with minimum climb of 500' per NM to 2682, then 204' per NM to 4100.  
Rwy 26R: Standard with minimum climb of 500' per NM to 2682, then 271' per NM to 4100.

(CONTINUED ON FOLLOWING PAGE)

(GIDGT2.GIDGT) 24249

GIDGT TWO DEPARTURE (RNAV) Departure Routes

LAS VEGAS, NEVADA  
HARRY REID INTL (LAS)

AL-662 (FAA)

(GIDGT2.GIDGT) 27JAN22

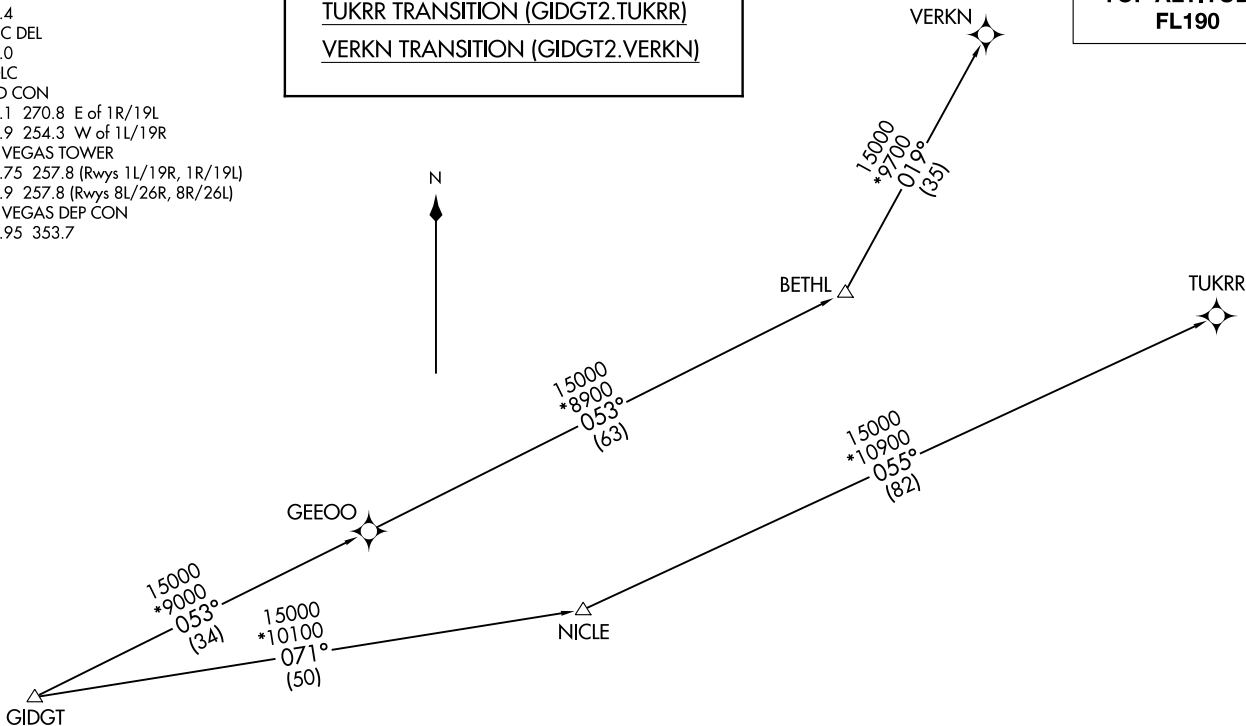
GIDGT TWO DEPARTURE (RNAV) Transition Routes

HARRY REID INTL (LAS)  
LAS VEGAS, NEVADA

D-ATIS  
132.4  
CLNC DEL  
118.0  
CPDLC  
GND CON  
121.1 270.8 E of 1R/19L  
121.9 254.3 W of 1L/19R  
LAS VEGAS TOWER  
118.75 257.8 (Rwys 1L/19R, 1R/19L)  
119.9 257.8 (Rwys 8L/26R, 8R/26L)  
LAS VEGAS DEP CON  
133.95 353.7

TUKRR TRANSITION (GIDGT2.TUKRR)  
VERKN TRANSITION (GIDGT2.VERKN)

**TOP ALTITUDE:  
FL190**



NOTE: DME/DME/IRU or GPS required.  
NOTE: RNAV 1.  
NOTE: RADAR required.  
NOTE: Turbojet only.  
NOTE: Chart not to scale.

(GIDGT2.GIDGT) 24249

Al-662 (FAA)  
GIDGT TWO DEPARTURE (RNAV) Transition Routes

HARRY REID INTL (LAS)  
LAS VEGAS, NEVADA