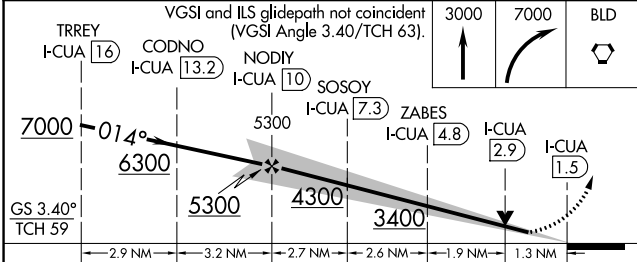
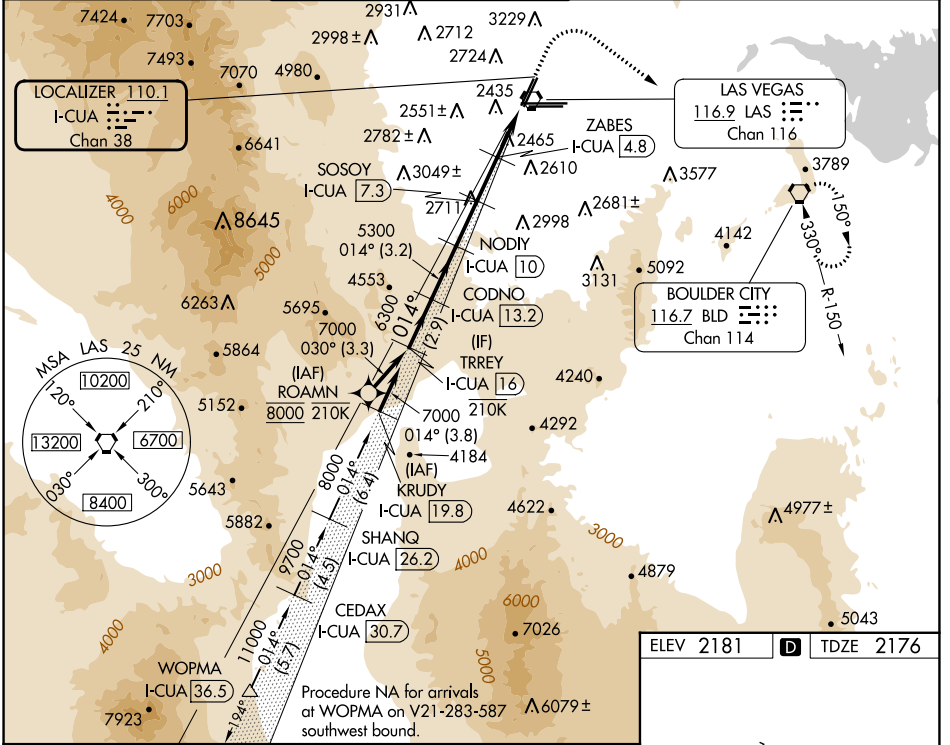


LOC/DME I-CUA <b>110.1</b> Chan <b>38</b>	APP CRS <b>014°</b>	Rwy ldg TDZE <b>8401</b> <b>2176</b> Apt Elev <b>2181</b>
---	------------------------	---

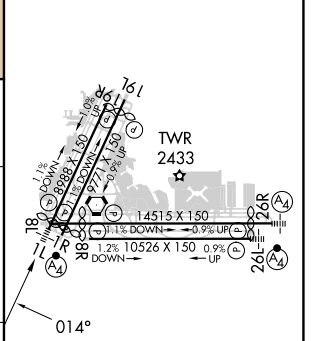
# ILS or LOC RWY 1L

HARRY REID INTL (LAS)

DME required. RNP APCH-GPS. From ROAMN.		MALSF	MISSED APPROACH: Climb to 3000 then climbing right turn to 7000 direct BLD VORTAC and hold, continue climb-in-hold to 7000.		
<p><b>▼</b> Rwy 1L helicopter visibility reduction below 3/4 SM NA.  <b>▲</b> For inop ALS, increase S-ILS 1L all Cats visibility to 3/8 SM.</p>					
D-ATIS <b>132.4</b>	LAS VEGAS APP CON <b>125.025 379.15</b> (West) <b>119.775 282.2</b> (East)	LAS VEGAS TOWER <b>118.75 257.8</b> (Rwy 1L/19R, 1R/19L) <b>119.9 257.8</b> (Rwy 8L/26R, 8R/26L)	GND CON <b>121.1 270.8</b> E of 1R/19L <b>121.9 254.3</b> W of 1L/19R	CLNC DEL <b>118.0</b>	CPDLC



ELEV 2181	<b>D</b> TDZE 2176
-----------	--------------------



CATEGORY	A	B	C	D
S-ILS 1L	2460-3/4 284 (300-3/4)			
S-LOC 1L	2720-3/4 544 (600-3/4)	2720-1 544 (600-1 3/8)		
<b>C</b> CIRCLING	3020-1 1/4 839 (900-1 1/4)	3060-1 1/4 879 (900-1 1/4)	3100-2 3/4 919 (1000-2 3/4)	3540-3 1359 (1400-3)

MRL Rwy 1R-19L	1.4515 X 150
REIL Rwys 1R, 8R, 19L and 19R	1.15 DOWN 1.2% 10526 X 150 0.9% UP
HIRL Rwys 1L-19R, 8L-26R and 8R-26L	2.6 DOWN

SW-4, 26 DEC 2024 to 23 JAN 2025

SW-4, 26 DEC 2024 to 23 JAN 2025