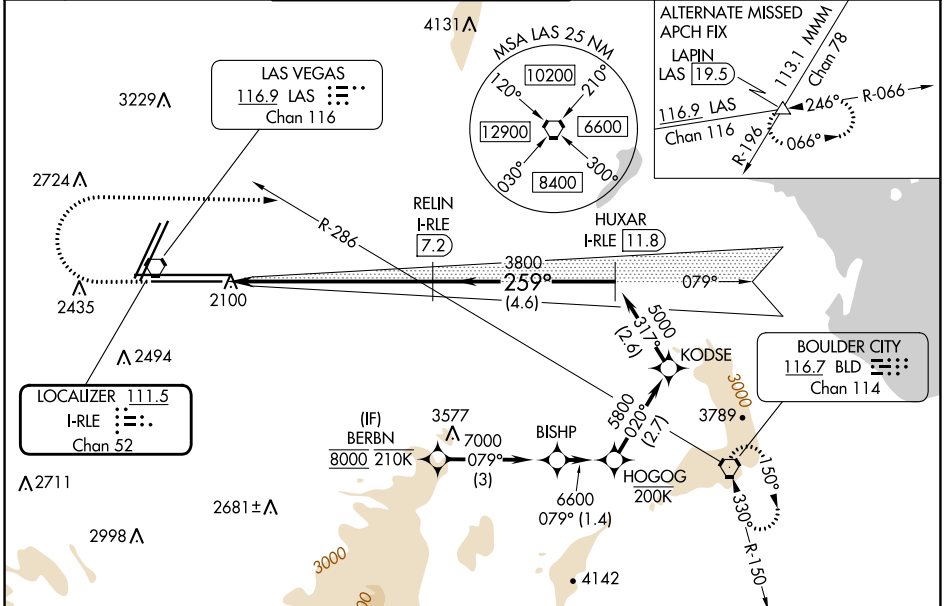


LOC/DME I-RLE <b>111.5</b> Chan <b>52</b>	APP CRS <b>259°</b>	Rwy Idg	26L	26R
		TDZE	<b>10526</b>	<b>12638</b>
			<b>2069</b>	<b>2067</b>
		Apt Elev	<b>2181</b>	<b>2181</b>

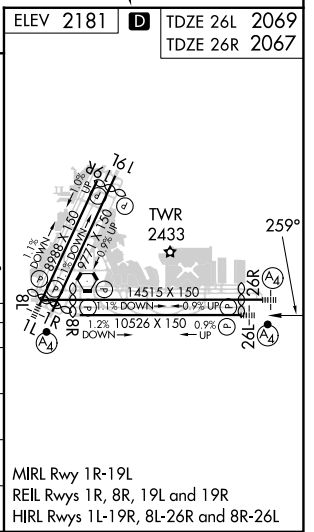
# ILS Y or LOC Y RWY 26L

HARRY REID INTL (LAS)

RNP APCH - GPS. DME required.	MALSF Rwy 26L 	MALS Rwy 26R 	MISSED APPROACH: Climb to 3200 then climbing right turn to 6000 heading 080° and on BLD R-286 to BLD VORTAC and hold, continue climb-in-hold to 6000.		
Inop table does not apply to S-ILS 26L or Sidestep 26R. For inop ALS increase S-LOC 26L Cats C and D visibility to 1 1/8 SM.					
D-ATIS <b>132.4</b>	LAS VEGAS APP CON <b>125.025 379.15</b> (West) <b>119.775 282.2</b> (East)	LAS VEGAS TOWER <b>118.75 257.8</b> (Rwy 1L/19R, 1R/19L) <b>119.9 257.8</b> (Rwy 8L/26R, 8R/26L)	GND CON <b>121.1 270.8</b> E of 1R/19L <b>121.9 254.3</b> W of 1L/19R	CLNC DEL <b>118.0</b>	CPDLC



3200	6000	BLD R-286	BLD	VGSI and ILS glidepath not coincident (VGSI Angle 3.00/TCH 84).	BERBN
		hdg 080°			
I-RLE <b>3.1</b>	I-RLE <b>7.2</b>	I-RLE <b>11.8</b>	I-RLE <b>1.9</b>	HOGOG 7000	BISHP 6600
3800	3800	5000	3800	KODSE 5800	HUXAR 7000
1.2 NM	4.1 NM	4.6 NM	2.6	2.7	1.4
3 NM	8000	7000	6600	5800	5000
CATEGORY	A	B	C	D	
S-ILS 26L	2269-3/4 200 (100-3/4)				
S-LOC 26L	2520-3/4	451 (400-3/4)	2520-1	451 (400-1)	
SIDESTEP 26R	2560-1	493 (400-1)	2560-1 1/2	493 (400-2)	
CIRCLING	3020-1 1/4 839 (900-1 1/4)	3060-1 1/4 879 (900-1 1/4)	3100-2 3/4 919 (1000-2 3/4)	3540-3 1359 (1400-3)	



SW-4, 26 DEC 2024 to 23 JAN 2025

SW-4, 26 DEC 2024 to 23 JAN 2025