

RNAV 1 - DME/DME/IRU or GPS.
RADAR required.

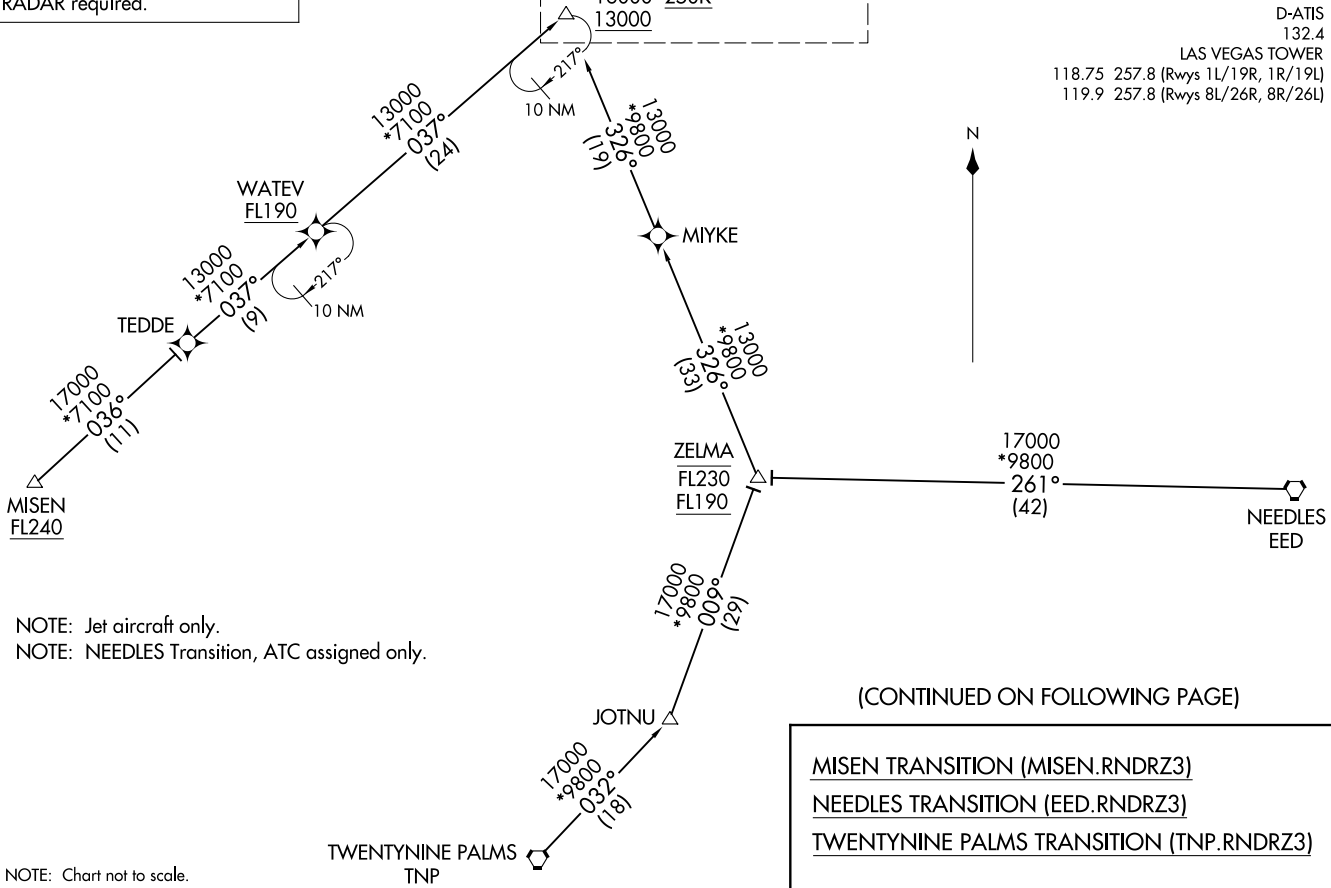
RNDRZ
16000 250K
13000
See following page for Arrival Routes

LAS VEGAS APP CON
125.025 379.15
D-ATIS
132.4
LAS VEGAS TOWER
118.75 257.8 (Rwys 1L/19R, 1R/19L)
119.9 257.8 (Rwys 8L/26R, 8R/26L)

RNDRZ THREE ARRIVAL (RNAV) (RNDRZ.RNDRZ3) 31OCT24

Transition Routes

LAS VEGAS, NEVADA
HARRY REID INTL (LAS)



NOTE: Jet aircraft only.
NOTE: NEEDLES Transition, ATC assigned only.

NOTE: Chart not to scale.

(CONTINUED ON FOLLOWING PAGE)

MISEN TRANSITION (MISEN.RNDRZ3)
NEEDLES TRANSITION (EED.RNDRZ3)
TWENTYNINE PALMS TRANSITION (TNP.RNDRZ3)

(RNDRZ.RNDRZ3) 24305

Transition Routes

LAS VEGAS, NEVADA
HARRY REID INTL (LAS)

LAS VEGAS APP CON
125.025 379.15
D-ATIS
132.4
LAS VEGAS TOWER
118.75 257.8 (Rwys 1L/19R, 1R/19L)
119.9 257.8 (Rwys 8L/26R, 8R/26L)

LAS VEGAS LAS

RNAV 1- DME/DME/IRU or GPS.
RADAR required.

ENNVY
11000

REDQN
9000 210K

BERBN
8000 210K

BOULDER CITY
BLD

Ldg Rwys 19L/R, 26L/R

BUETY
13000

YAGGR
8000 210K
Ldg Rwys 8L/R

ROAMN
8000 210K
Ldg Rwys 1L/R

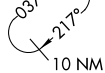
GRMMA

HIMIT
8800

SLOTS
8000

RUMLY
13000
10000

RNDRZ
16000 250K
13000



RNDRZ THREE ARRIVAL (RNAV)
(RNDRZ.RNDRZ3) 31OCT24

Arrival Routes

LAS VEGAS, NEVADA
HARRY REID INTL (LAS)

(RNDRZ.RNDRZ3) 24305
RNDRZ THREE ARRIVAL (RNAV)

Arrival Routes

HARRY REID INTL (LAS)
LAS VEGAS, NEVADA

NOTE: Jet aircraft only.
NOTE: NEEDLES Transition, ATC assigned only.

NOTE: Chart not to scale.

(CONTINUED ON FOLLOWING PAGE)

ARRIVAL ROUTE DESCRIPTION

LANDING RUNWAYS 1L/R: From RNRDZ on track 048° to cross RUMLY between 10000 and 13000, then on track 048° to cross HIMIT at or above 8800, then on track 048° to cross SLOTS at 8000, then on track 030° to cross ROAMN at 8000 and at 210K, then on track 030°. Expect RADAR vectors to final approach course.

LANDING RUNWAYS 8L/R: From RNRDZ on track 048° to cross RUMLY between 10000 and 13000, then on track 048° to cross HIMIT at or above 8800, then on track 048° to cross SLOTS at 8000, then on track 006° to cross YAGGR at 8000 and at 210K, then on track 005°. Expect RADAR vectors to final approach course.

LANDING RUNWAYS 19L/R, 26L/R: From RNRDZ on track 037° to GRMMA, then on track 019° to cross BUETY at or above 13000, then on track 019° to cross ENNVY at or above 11000, then on track 082° to cross REDQN at or above 9000 and at 210K, then on track 083° to cross BERBN at 8000 and at 210K, then on track 079°. Expect RADAR vectors to final approach course.

LOST COMMUNICATIONS

LANDING RUNWAY 8R: At YAGGR proceed on the RNAV (RNP) RWY 8R approach, if unable, proceed visually to intercept the final approach course; if unable, maintain 8000 proceed direct LAS VORTAC then maintain 7000 proceed to BLD VORTAC and then on the ILS or LOC RWY 26L approach.

SW-4, 26 DEC 2024 to 23 JAN 2025

SW-4, 26 DEC 2024 to 23 JAN 2025