

VORTAC LAS <b>116.9</b> Chan 116	APP CRS <b>262°</b>	Rwy Idg	26L	26R
		TDZE	<b>10526</b>	<b>12638</b>
		Apt Elev	<b>2069</b>	<b>2067</b>
			<b>2181</b>	<b>2181</b>

# VOR RWY 26L/R

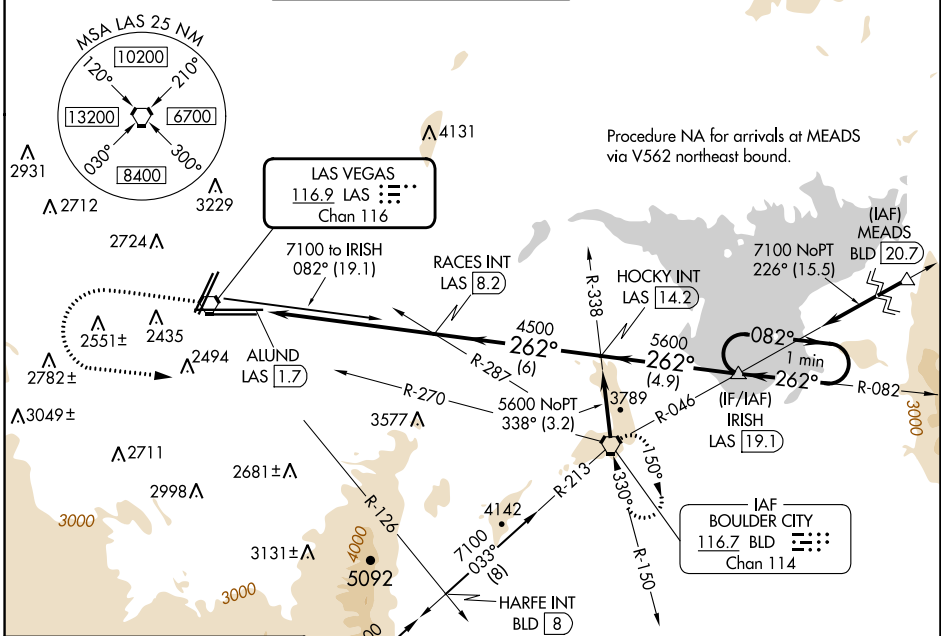
HARRY REID INTL (LAS)

**⚠** For inop ALS, increase S-26L and S-26R Cat D visibility 1/2 SM.

MALSF Rwy 26L	MALS Rwy 26R

**MISSED APPROACH:** Climb to 4000 then climbing left turn to 6000 on heading 074° and BLD R-270 to BLD VORTAC and hold.

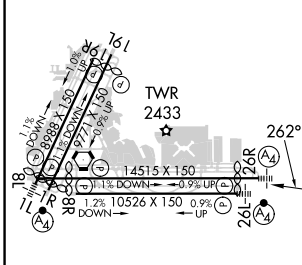
D-ATIS <b>132.4</b>	LAS VEGAS APP CON <b>125.025 379.15</b> (West) <b>119.775 282.2</b> (East)	LAS VEGAS TOWER <b>118.75 257.8</b> (Rwy 1L/19R, 1R/19L) <b>119.9 257.8</b> (Rwy 8L/26R, 8R/26L)	GND CON <b>121.1 270.8</b> E of 1R/19L <b>121.9 254.3</b> W of 1L/19R	CLNC DEL <b>118.0</b>	CPDLC
------------------------	--	--	---	--------------------------	-------



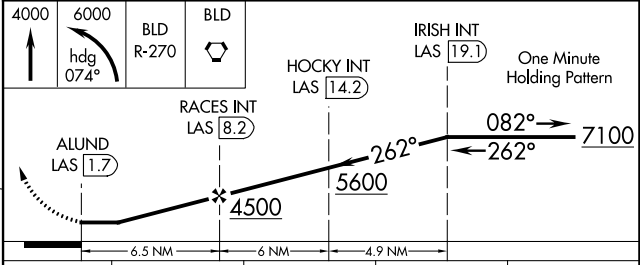
SW-4, 26 DEC 2024 to 23 JAN 2025

SW-4, 26 DEC 2024 to 23 JAN 2025

ELEV 2181	<b>D</b> TDZE 26L 2069 TDZE 26R 2067
-----------	---



REIL Rwy 1R, 8R, 19L and 19R	TWR 2433
MIRL Rwy 1R-19L	
HIRL Rwy 1L-19R, 8L-26R and 8R-26L	
FAF to MAP 6.5 NM	
Knots	60 90 120 150 180
Min:Sec	6:30 4:20 3:15 2:36 2:10



CATEGORY	A	B	C	D
S-26L	2720-3/4	651 (600-3/4)	2720-1 1/8	651 (600-1 1/8)
S-26R	2720-3/4	653 (600-3/4)	2720-1 1/8	653 (600-1 1/8)
<b>C</b> CIRCLING	3020-1 1/4 839 (900-1 1/4)	3060-1 1/4 879 (900-1 1/4)	3100-2 3/4 919 (1000-2 3/4)	3540-3 1359 (1400-3)